



[Go to Product page](#)

Datasheet for ABIN6143890  
**anti-Motilin antibody (AA 26-115)**

4 Images

Overview

Quantity:	100 µL
Target:	Motilin (MLN)
Binding Specificity:	AA 26-115
Reactivity:	Human
Host:	Rabbit
Clonality:	Polyclonal
Conjugate:	This Motilin antibody is un-conjugated
Application:	Western Blotting (WB), Immunohistochemistry (IHC)

Product Details

Immunogen:	Recombinant fusion protein containing a sequence corresponding to amino acids 26-115 of human MLN (NP_002409.1).
Sequence:	FVPIFTYGEL QRMQEKERNK GQKKSLSVWQ RSGEEGPVDP AEPIREEENE MIKLTAPLEI GMRMNSRQLE KYPATLEGLL SEMLPQHAAK
Isotype:	IgG
Cross-Reactivity:	Human, Mouse
Characteristics:	Polyclonal Antibodies

Target Details

Target:	Motilin (MLN)
---------	---------------

## Target Details

---

Alternative Name:	MLN ( <a href="#">MLN Products</a> )
Background:	This gene encodes a small peptide hormone that is secreted by cells of the small intestine to regulate gastrointestinal contractions and motility. Proteolytic processing of the secreted protein produces the mature peptide and a byproduct referred to as motilin-associated peptide (MAP). Three transcript variants encoding different preproprotein isoforms but the same mature peptide have been found for this gene.,MLN,motilin,Signal Transduction,G protein signaling,G-Protein-Coupled Receptors(GPCR),Cell Biology & Developmental Biology,Growth factor,MLN
Molecular Weight:	12 kDa
Gene ID:	4295
UniProt:	<a href="#">P12872</a>
Pathways:	<a href="#">Hormone Activity</a>

## Application Details

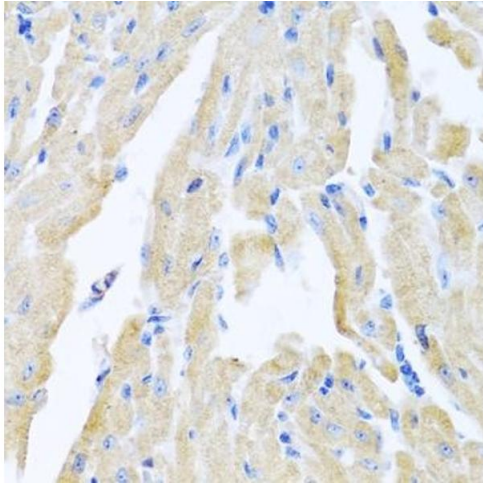
---

Application Notes:	WB,1:500 - 1:2000,IHC,1:50 - 1:100
Restrictions:	For Research Use only

## Handling

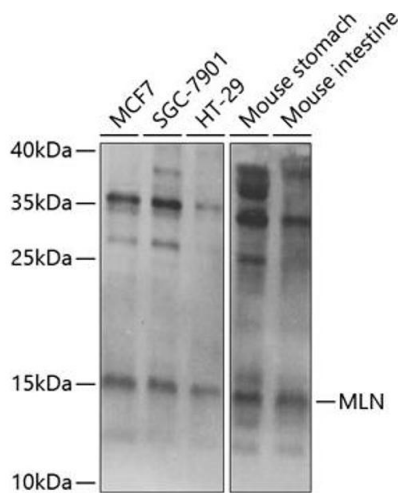
---

Format:	Liquid
Buffer:	PBS with 0.02 % sodium azide,50 % glycerol, pH 7.3.
Preservative:	Sodium azide
Precaution of Use:	This product contains Sodium azide: a POISONOUS AND HAZARDOUS SUBSTANCE which should be handled by trained staff only.
Storage:	-20 °C
Storage Comment:	Store at -20°C. Avoid freeze / thaw cycles.



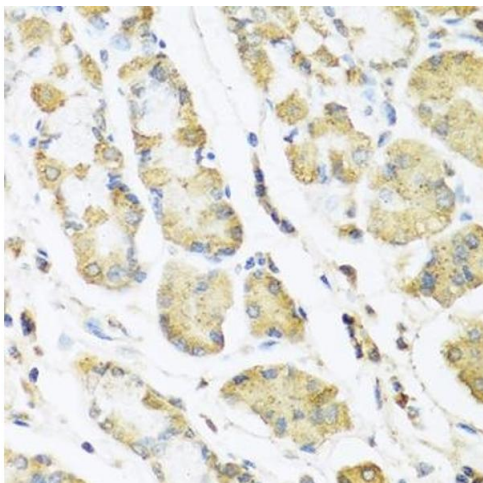
### Immunohistochemistry

**Image 1.** Immunohistochemistry of paraffin-embedded mouse heart using MLN antibody (ABIN6128307, ABIN6143890, ABIN6143891 and ABIN6222013) at dilution of 1:100 (40x lens). Perform microwave antigen retrieval with 10 mM PBS buffer pH 7.2 before commencing with IHC staining protocol.



### Western Blotting

**Image 2.** Western blot analysis of extracts of various cell lines, using MLN Antibody (ABIN6128307, ABIN6143890, ABIN6143891 and ABIN6222013) at 1:1000 dilution. Secondary antibody: HRP Goat Anti-Rabbit IgG (H+L) (ABIN1684268 and ABIN3020597) at 1:10000 dilution. Lysates/proteins: 25 µg per lane. Blocking buffer: 3 % nonfat dry milk in TBST. Detection: ECL Basic Kit (RM00020). Exposure time: 1s.



### Immunohistochemistry

**Image 3.** Immunohistochemistry of paraffin-embedded human stomach using MLN antibody (ABIN6128307, ABIN6143890, ABIN6143891 and ABIN6222013) at dilution of 1:100 (40x lens). Perform microwave antigen retrieval with 10 mM PBS buffer pH 7.2 before commencing with IHC staining protocol.

Please check the [product details page](#) for more images. Overall 4 images are available for ABIN6143890.