



[Go to Product page](#)

Datasheet for ABIN6143906
anti-MMP16 antibody (AA 290-565)

6 Images

Overview

Quantity:	100 µL
Target:	MMP16
Binding Specificity:	AA 290-565
Reactivity:	Human
Host:	Rabbit
Clonality:	Polyclonal
Conjugate:	This MMP16 antibody is un-conjugated
Application:	Western Blotting (WB), Immunohistochemistry (IHC), Immunofluorescence (IF)

Product Details

Immunogen:	Recombinant fusion protein containing a sequence corresponding to amino acids 290-565 of human MMP16 (NP_005932.2).
Sequence:	YGPPDKIPPP TRPLPTVPPH RSIPPADPRK NDRPKPPRPP TGRPSYPGAK PNICDGNFNT LAILRREMFV FKDQWFWRVR NNRVMDGYPM QITYFWRGLP PSIDAVYENS DGNFVFFKGN KYWVFKDTTL QPGYPHDLIT LGSGIPPHGI DSAIWWEDVG KTYFFKGDYR WRYSEEMKTM DPGYPKPITV WKGIPESPQG AFVHKENGFT YFYKGKEYWK FNNQILKVEP GYPR SILKDF MGCDGPTDRV KEGHSPDDV DIVIKLDNTA STVKAI
Isotype:	IgG
Cross-Reactivity:	Human, Mouse, Rat
Characteristics:	Polyclonal Antibodies

Target Details

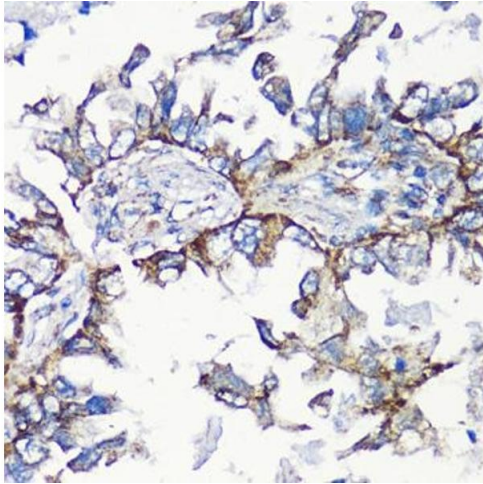
Target:	MMP16
Alternative Name:	MMP16 (MMP16 Products)
Background:	Proteins of the matrix metalloproteinase (MMP) family are involved in the breakdown of extracellular matrix in normal physiological processes, such as embryonic development, reproduction, and tissue remodeling, as well as in disease processes, such as arthritis and metastasis. Most MMP's are secreted as inactive proproteins which are activated when cleaved by extracellular proteinases. The encoded protein activates MMP2 by cleavage. This gene was once referred to as MT-MMP2, but was renamed as MT-MMP3 or MMP16.,MMP16,C8orf57,MMP-X2,MT-MMP2,MT-MMP3,MT3-MMP,Cancer,Invasion and Metastasis,Cell Biology & Developmental Biology,Extracellular Matrix,MMPs,Ubiquitin,Cardiovascular,Angiogenesis,MMP16
Molecular Weight:	52 kDa/69 kDa
Gene ID:	4325
UniProt:	P51512

Application Details

Application Notes:	WB,1:500 - 1:2000,IHC,1:50 - 1:200,IF,1:50 - 1:200
Restrictions:	For Research Use only

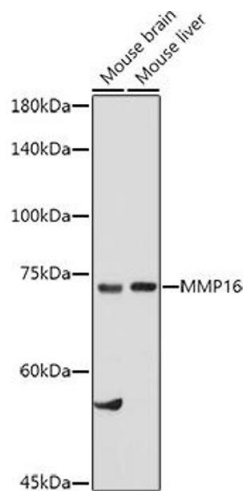
Handling

Format:	Liquid
Buffer:	PBS with 0.02 % sodium azide,50 % glycerol, pH 7.3.
Preservative:	Sodium azide
Precaution of Use:	This product contains Sodium azide: a POISONOUS AND HAZARDOUS SUBSTANCE which should be handled by trained staff only.
Storage:	-20 °C
Storage Comment:	Store at -20°C. Avoid freeze / thaw cycles.



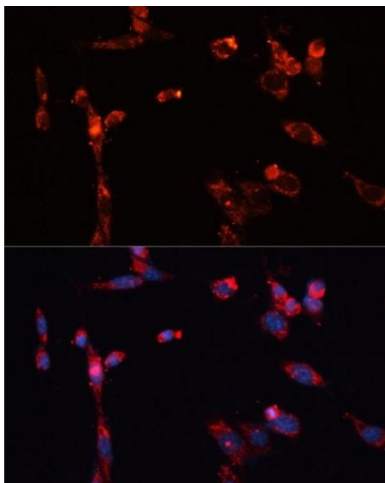
Immunohistochemistry

Image 1. Immunohistochemistry of paraffin-embedded human lung cancer using MMP16 antibody (ABIN6132356, ABIN6143906, ABIN6143907 and ABIN6214654) at dilution of 1:100 (40x lens). Perform microwave antigen retrieval with 10 mM PBS buffer pH 7.2 before commencing with IHC staining protocol.



Western Blotting

Image 2. Western blot analysis of extracts of various cell lines, using MMP16 antibody (ABIN6132356, ABIN6143906, ABIN6143907 and ABIN6214654) at 1:1000 dilution. Secondary antibody: HRP Goat Anti-Rabbit IgG (H+L) (ABIN1684268 and ABIN3020597) at 1:10000 dilution. Lysates/proteins: 25 µg per lane. Blocking buffer: 3 % nonfat dry milk in TBST. Detection: ECL Basic Kit (RM00020). Exposure time: 90s.



Immunofluorescence

Image 3. Immunofluorescence analysis of NIH/3T3 cells using MMP16 antibody (ABIN6132356, ABIN6143906, ABIN6143907 and ABIN6214654) at dilution of 1:100. Blue: DAPI for nuclear staining.

Please check the [product details page](#) for more images. Overall 6 images are available for ABIN6143906.