

Datasheet for ABIN6143911
anti-MMP2 antibody (AA 40-280)

7 Images

6 Publications

[Go to Product page](#)

Overview

Quantity:	100 µL
Target:	MMP2
Binding Specificity:	AA 40-280
Reactivity:	Human
Host:	Rabbit
Clonality:	Polyclonal
Conjugate:	This MMP2 antibody is un-conjugated
Application:	Western Blotting (WB), Immunohistochemistry (IHC), Immunofluorescence (IF)

Product Details

Immunogen:	Recombinant fusion protein containing a sequence corresponding to amino acids 40-280 of human MMP2 (NP_004521.1).
Sequence:	DVAPKTDKEL AVQYLNTFYG CPKESCNLFV LKDTLKKMQK FFGLPQTGDL DQNTIETMRK PRCGNPDVAN YNFFPRKPKW DKNQITYRII GYTPDLDPET VDDAFARAFQ VWSDVTPLRF SRIHDGEADI MINFGRWEHG DGYPFDGKDG LLAHAFAPGT GVGGDSHFDD DELWTLGEGQ VVRVKYGNAD GEYCKFPFLF NGKEYNSCTD TGRSDGFLWC STTYNFEKDG KYGFCPHEAL F
Isotype:	IgG
Cross-Reactivity:	Human, Mouse, Rat
Characteristics:	Polyclonal Antibodies

Target Details

Target:	MMP2
Alternative Name:	MMP2 (MMP2 Products)
Background:	<p>This gene is a member of the matrix metalloproteinase (MMP) gene family, that are zinc-dependent enzymes capable of cleaving components of the extracellular matrix and molecules involved in signal transduction. The protein encoded by this gene is a gelatinase A, type IV collagenase, that contains three fibronectin type II repeats in its catalytic site that allow binding of denatured type IV and V collagen and elastin. Unlike most MMP family members, activation of this protein can occur on the cell membrane. This enzyme can be activated extracellularly by proteases, or, intracellularly by its S-glutathiolation with no requirement for proteolytical removal of the pro-domain. This protein is thought to be involved in multiple pathways including roles in the nervous system, endometrial menstrual breakdown, regulation of vascularization, and metastasis. Mutations in this gene have been associated with Winchester syndrome and Nodulosis-Arthropathy-Osteolysis (NAO) syndrome. Alternative splicing results in multiple transcript variants encoding different isoforms.,CLG4,CLG4A,MMP-2,MMP-II,MONA,TBE-1,MMP2,Cancer,Tumor biomarkers,Invasion and Metastasis,Signal Transduction,G protein signaling,G2/M DNA Damage Checkpoint,Cell Biology & Developmental Biology,Extracellular Matrix,MMPs,Ubiquitin,Endocrine & Metabolism,Cardiovascular,Angiogenesis,Hypoxia,MMP2</p>
Molecular Weight:	65 kDa/68 kDa/73 kDa
Gene ID:	4313
UniProt:	P08253
Pathways:	Activation of Innate immune Response

Application Details

Application Notes:	WB,1:500 - 1:2000,IHC,1:50 - 1:200,IF,1:50 - 1:200
Comment:	HIGH QUALITY
Restrictions:	For Research Use only

Handling

Format:	Liquid
Buffer:	PBS with 0.02 % sodium azide,50 % glycerol, pH 7.3.
Preservative:	Sodium azide

Handling

Precaution of Use:	This product contains Sodium azide: a POISONOUS AND HAZARDOUS SUBSTANCE which should be handled by trained staff only.
--------------------	--

Storage:	-20 °C
----------	--------

Storage Comment:	Store at -20°C. Avoid freeze / thaw cycles.
------------------	---

Publications

Product cited in:

Fu, Wang, Wu, Feng, Wang, Zhou, Ma, Wang: "HMGA1 exacerbates tumor growth through regulating the cell cycle and accelerates migration/invasion via targeting miR-221/222 in cervical cancer." in: **Cell death & disease**, Vol. 9, Issue 6, pp. 594, (2018) ([PubMed](#)).

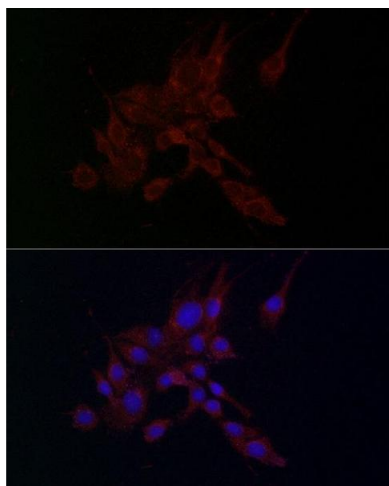
Huang, Song, Sun, Zhang, Huang: "IRX5 promotes NF-κB signalling to increase proliferation, migration and invasion via OPN in tongue squamous cell carcinoma." in: **Journal of cellular and molecular medicine**, (2018) ([PubMed](#)).

Xing, Yu, Zhang, Luo, Lei, Huang, Lin, Huang, Huang, Nong, Zhou, Wei et al.: "Isoviolanthin Extracted from *Dendrobium officinale* Reverses TGF-β1-Mediated Epithelial-Mesenchymal Transition in Hepatocellular Carcinoma Cells via Deactivating the TGF-β/Smad and PI3K/Akt/mTOR ..." in: **International journal of molecular sciences**, Vol. 19, Issue 6, (2018) ([PubMed](#)).

"Retracted: 'Anti-fibrotic actions of Ghrelin by inhibition of the NADPH oxidase-ROS signaling pathway' by Qian Wang, Xin Sui, Rui Chen, Peiyong Ma, Tao Ding, Dianjun Sui, and Ping Yang." in: **Clinical and experimental pharmacology & physiology**, Vol. 45, Issue 8, pp. 885, (2018) ([PubMed](#)).

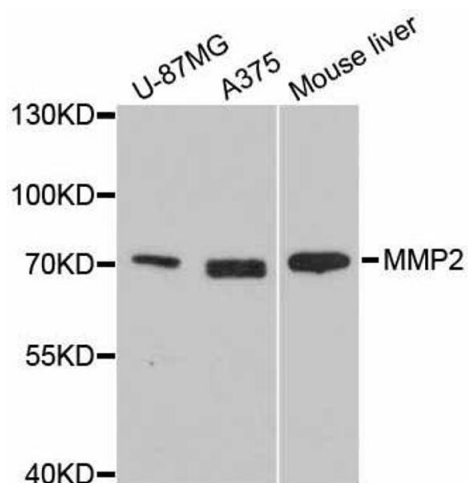
Wang, Dong, Liu, Xu, Hu, Fan, Chen: "Early growth response factor-1 DNA enzyme 1 inhibits the formation of abdominal aortic aneurysm in rats." in: **Experimental and therapeutic medicine**, Vol. 16, Issue 1, pp. 141-148, (2018) ([PubMed](#)).

There are more publications referencing this product on: [Product page](#)



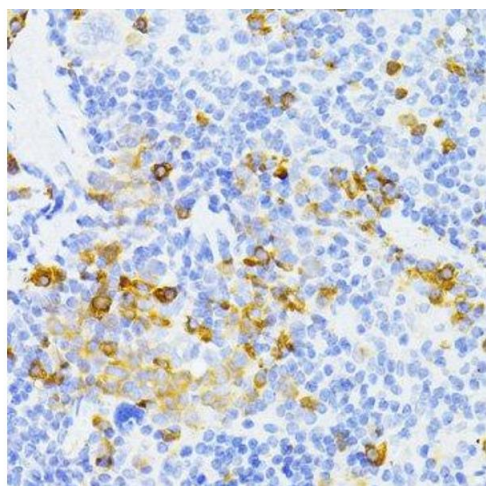
Immunofluorescence

Image 1. Immunofluorescence analysis of PC-12 cells using MMP2 antibody (ABIN6129301, ABIN6143911, ABIN6143913 and ABIN6221846) at dilution of 1:100. Blue: DAPI for nuclear staining.



Western Blotting

Image 2. Western blot analysis of extracts of various cell lines, using MMP2 antibody.



Immunohistochemistry (Paraffin-embedded Sections)

Image 3. Immunohistochemistry of paraffin-embedded mouse spleen using MMP2 antibody.

Please check the [product details page](#) for more images. Overall 7 images are available for ABIN6143911.