



[Go to Product page](#)

Datasheet for ABIN6143935  
**anti-MOBKL3 antibody (AA 1-225)**

3 Images

Overview

Quantity:	100 µL
Target:	MOBKL3
Binding Specificity:	AA 1-225
Reactivity:	Human
Host:	Rabbit
Clonality:	Polyclonal
Conjugate:	This MOBKL3 antibody is un-conjugated
Application:	Western Blotting (WB), Immunohistochemistry (IHC), Immunofluorescence (IF)

Product Details

Immunogen:	Recombinant fusion protein containing a sequence corresponding to amino acids 1-225 of human MOB4 (NP_056202.2).
Sequence:	MVMAEGTAVL RRRNPGTKAQ DFYNWPDES F DEMDSTLAVQ QYIQQNIRAD CSNIDKILEP PEGQDEGVWK YEHLRQFCLE LNGLAVKLQS ECHPDTCTQM TATEQWIFLC AAHKTPKECP AIDYTRHTLD GAACLLNSNK YFPSRVSIKE SSVAKLGSVC RRIYRIFSHA YFHHRQIFDE YENETFLCHR FTKFVMKYNL MSKDNLIVPI LEEVQNSVS GESEA
Isotype:	IgG
Cross-Reactivity:	Human, Mouse, Rat
Characteristics:	Polyclonal Antibodies

## Target Details

---

Target:	MOBKL3
Alternative Name:	MOB4 ( <a href="#">MOBKL3 Products</a> )
Background:	<p>This gene was identified based on its similarity with the mouse counterpart. Studies of the mouse counterpart suggest that the expression of this gene may be regulated during oocyte maturation and preimplantation following zygotic gene activation. Alternatively spliced transcript variants encoding distinct isoforms have been observed. Naturally occurring read-through transcription occurs between this locus and the neighboring locus</p> <p>HSPE1.,MOB4,2C4D,CGI-95,MOB1,MOB3,MOBKL3,PHOEN,PREI3,Signal Transduction,Cell Biology &amp; Developmental Biology,Stem Cells,Germline Stem Cells,MOB4</p>
Molecular Weight:	22 kDa/23 kDa/26 kDa
Gene ID:	25843
UniProt:	<a href="#">Q9Y3A3</a>

## Application Details

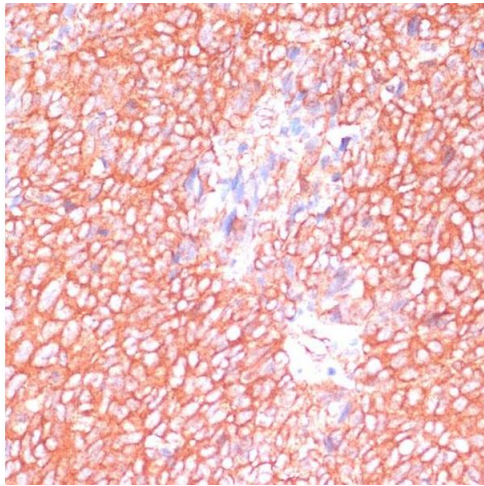
---

Application Notes:	WB,1:500 - 1:2000,IHC,1:50 - 1:100,IF,1:50 - 1:100
Comment:	HIGH QUALITY
Restrictions:	For Research Use only

## Handling

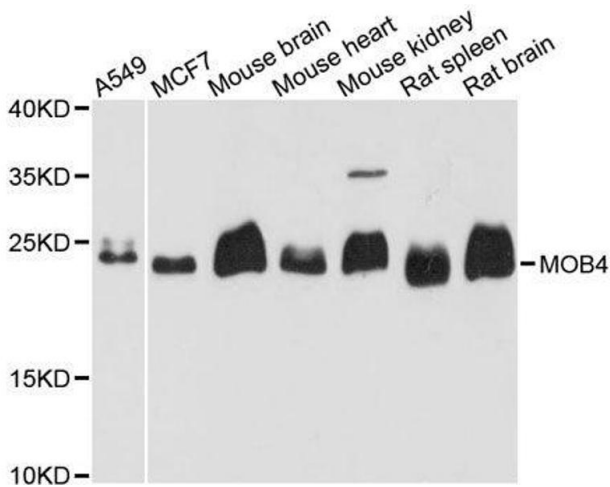
---

Format:	Liquid
Buffer:	PBS with 0.02 % sodium azide,50 % glycerol, pH 7.3.
Preservative:	Sodium azide
Precaution of Use:	This product contains Sodium azide: a POISONOUS AND HAZARDOUS SUBSTANCE which should be handled by trained staff only.
Storage:	-20 °C
Storage Comment:	Store at -20°C. Avoid freeze / thaw cycles.



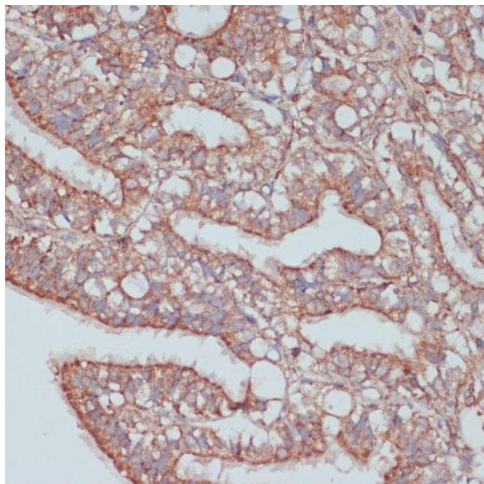
### Immunohistochemistry

**Image 1.** Immunohistochemistry of paraffin-embedded human oophoroma using MOB4 antibody (ABIN6132926, ABIN6143935, ABIN6143936 and ABIN6220703) at dilution of 1:100 (40x lens). Perform microwave antigen retrieval with 10 mM PBS buffer pH 7.2 before commencing with IHC staining protocol.



### Western Blotting

**Image 2.** Western blot analysis of extracts of various cell lines, using MOB4 antibody.



### Immunohistochemistry

**Image 3.** Immunohistochemistry of paraffin-embedded rat ovary using MOB4 antibody (ABIN6132926, ABIN6143935, ABIN6143936 and ABIN6220703) at dilution of 1:100 (40x lens). Perform microwave antigen retrieval with 10 mM PBS buffer pH 7.2 before commencing with IHC staining protocol.