

Datasheet for ABIN6144007
anti-MRPL13 antibody (AA 1-179)



[Go to Product page](#)

3 Images

Overview

Quantity:	100 µL
Target:	MRPL13
Binding Specificity:	AA 1-179
Reactivity:	Human
Host:	Rabbit
Clonality:	Polyclonal
Conjugate:	This MRPL13 antibody is un-conjugated
Application:	Western Blotting (WB), Immunohistochemistry (IHC)

Product Details

Immunogen:	Recombinant fusion protein containing a sequence corresponding to amino acids 1-179 of human MRPL13 (NP_054797.2).
Sequence:	MSSFSRAPQQ WATFARIWYL LDGKMQPPGK LAAMASIRLQ GLHKPVYHAL SDCGDHVVIM NTRHIAFSGN KWEQKVYSSH TGYPGGFRQV TAAQLHLRDP VAIVKLAIYG MLPKNLHRRT MMERLHLFPD EYIPEDILKN LVEELPQPRK IPKRLDEYTQ EEIDAFPRWL TPPEDYRL
Isotype:	IgG
Cross-Reactivity:	Human, Mouse, Rat
Characteristics:	Polyclonal Antibodies

Target Details

Target:	MRPL13
---------	--------

Target Details

Alternative Name: [MRPL13 \(MRPL13 Products\)](#)

Background: Mammalian mitochondrial ribosomal proteins are encoded by nuclear genes and help in protein synthesis within the mitochondrion. Mitochondrial ribosomes (mitoribosomes) consist of a small 28S subunit and a large 39S subunit. They have an estimated 75 % protein to rRNA composition compared to prokaryotic ribosomes, where this ratio is reversed. Another difference between mammalian mitoribosomes and prokaryotic ribosomes is that the latter contain a 5S rRNA. Among different species, the proteins comprising the mitoribosome differ greatly in sequence, and sometimes in biochemical properties, which prevents easy recognition by sequence homology. This gene encodes a 39S subunit protein.,MRPL13,L13,L13A,L13mt,RPL13,RPML13,Epigenetics & Nuclear Signaling,RNA Binding,MRPL13

Molecular Weight: 20 kDa

Gene ID: 28998

UniProt: [Q9BYD1](#)

Application Details

Application Notes: WB,1:500 - 1:2000,IHC,1:50 - 1:200

Comment: HIGH QUALITY

Restrictions: For Research Use only

Handling

Format: Liquid

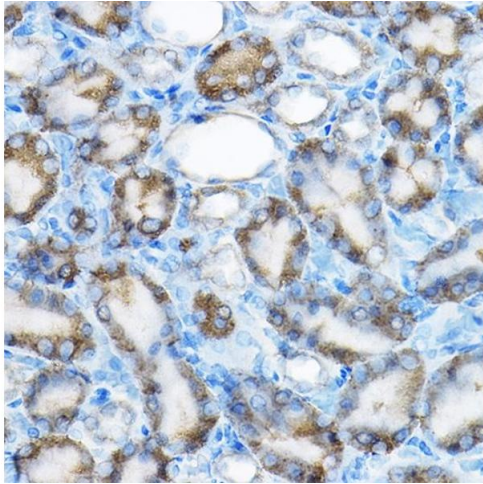
Buffer: PBS with 0.02 % sodium azide,50 % glycerol, pH 7.3.

Preservative: Sodium azide

Precaution of Use: This product contains Sodium azide: a POISONOUS AND HAZARDOUS SUBSTANCE which should be handled by trained staff only.

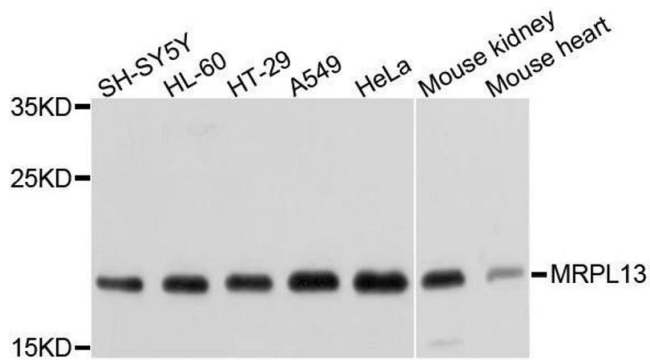
Storage: -20 °C

Storage Comment: Store at -20°C. Avoid freeze / thaw cycles.



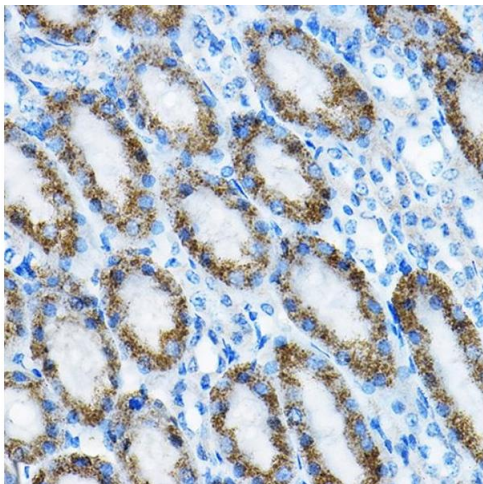
Immunohistochemistry

Image 1. Immunohistochemistry of paraffin-embedded rat kidney using MRPL13 Rabbit pAb at dilution of 1:100 (40x lens). Perform high pressure antigen retrieval with 10 mM citrate buffer pH 6.0 before commencing with IHC staining protocol.



Western Blotting

Image 2. Western blot analysis of extracts of various cell lines, using MRPL13 antibody.



Immunohistochemistry

Image 3. Immunohistochemistry of paraffin-embedded mouse kidney using MRPL13 Rabbit pAb at dilution of 1:100 (40x lens). Perform high pressure antigen retrieval with 10 mM citrate buffer pH 6.0 before commencing with IHC staining protocol.