

Datasheet for ABIN6144014  
**anti-MRPL39 antibody (AA 39-338)**



[Go to Product page](#)

1 Image

## Overview

Quantity:	100 µL
Target:	MRPL39
Binding Specificity:	AA 39-338
Reactivity:	Human
Host:	Rabbit
Clonality:	Polyclonal
Conjugate:	This MRPL39 antibody is un-conjugated
Application:	Western Blotting (WB), Immunohistochemistry (IHC)

## Product Details

Immunogen:	Recombinant fusion protein containing a sequence corresponding to amino acids 39-338 of human MRPL39 (NP_059142.2).
Sequence:	ELTEMRNDLF NKEKARQLSL TPRTEKIEVK HVGKTDPGTV FVMNKNISTP YSCAMHLSEW YCRKSILALV DGQPWDMYKP LTKSCEIKFL TFKDCDPGEV NKAYWRSCAM MMGCVIERAF KDEYMVNLVR APEVPVISGA FCYDVVLSK LDEWMPTKEN LRSFTKDAHA LIYKDLPFET LEVEAKVALE IFQHSHYKVD FIEEKASQNP ERIVKLHRIG DFIDVSEGPL IPRTSICFQY EVSAVHNLQP TQPSLIRRFQ GVSLPVHLRA HFTIWDKLLR RSRKMTEDQ SKATEECTST
Isotype:	IgG
Cross-Reactivity:	Human, Mouse, Rat
Characteristics:	Polyclonal Antibodies

## Target Details

---

Target:	MRPL39
Alternative Name:	MRPL39 ( <a href="#">MRPL39 Products</a> )
Background:	<p>Mammalian mitochondrial ribosomal proteins are encoded by nuclear genes and help in protein synthesis within the mitochondrion. Mitochondrial ribosomes (mitoribosomes) consist of a small 28S subunit and a large 39S subunit. They have an estimated 75 % protein to rRNA composition compared to prokaryotic ribosomes, where this ratio is reversed. Another difference between mammalian mitoribosomes and prokaryotic ribosomes is that the latter contain a 5S rRNA. Among different species, the proteins comprising the mitoribosome differ greatly in sequence, and sometimes in biochemical properties, which prevents easy recognition by sequence homology. This gene encodes a 39S subunit protein. Two transcript variants encoding distinct isoforms have been described. A pseudogene corresponding to this gene is found on chromosome 5q.,MRPL39,C21orf92,L39mt,MRP-L5,MRPL5,MSTP003,PRED22,PRED66,RPML5,Epigenetics &amp; Nuclear Signaling,RNA Binding,MRPL39</p>
Molecular Weight:	38 kDa/40 kDa
Gene ID:	54148
UniProt:	<a href="#">Q9NYK5</a>

## Application Details

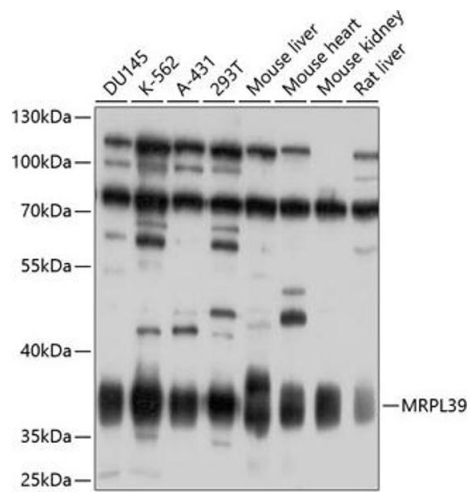
---

Application Notes:	WB,1:1000 - 1:4000,IHC,1:50 - 1:200
Comment:	HIGH QUALITY
Restrictions:	For Research Use only

## Handling

---

Format:	Liquid
Buffer:	PBS with 0.02 % sodium azide,50 % glycerol, pH 7.3.
Preservative:	Sodium azide
Precaution of Use:	This product contains Sodium azide: a POISONOUS AND HAZARDOUS SUBSTANCE which should be handled by trained staff only.
Storage:	-20 °C
Storage Comment:	Store at -20°C. Avoid freeze / thaw cycles.



### Western Blotting

**Image 1.** Western blot analysis of extracts of various cell lines, using MRPL39 antibody at 1:1000 dilution. Secondary antibody: HRP Goat Anti-Rabbit IgG (H+L) (ABIN1684268 and ABIN3020597) at 1:10000 dilution. Lysates/proteins: 25 µg per lane. Blocking buffer: 3% nonfat dry milk in TBST. Detection: ECL Basic Kit (RM00020). Exposure time: 90s.