

Datasheet for ABIN6144026  
**anti-MRPS16 antibody (AA 1-137)**



[Go to Product page](#)

2 Images

## Overview

Quantity:	100 µL
Target:	MRPS16
Binding Specificity:	AA 1-137
Reactivity:	Human
Host:	Rabbit
Clonality:	Polyclonal
Conjugate:	This MRPS16 antibody is un-conjugated
Application:	Western Blotting (WB), Immunofluorescence (IF)

## Product Details

Immunogen:	Recombinant fusion protein containing a sequence corresponding to amino acids 1-137 of human MRPS16 (NP_057149.1).
Sequence:	MVHLTLLCK AYRGGHLTIR LALGGCTNRP FYRIVAANK CPRDGRFVEQ LGSYDPLPNS HGEKLVALNL DRIRHWIGCG AHLKPMKEL LGLAGFFPLH PMMITNAERL RKRAREVLL ASQKTDAEAT DTEATET
Isotype:	IgG
Cross-Reactivity:	Human, Mouse, Rat
Characteristics:	Polyclonal Antibodies

## Target Details

Target:	MRPS16
---------	--------

## Target Details

---

Alternative Name: [MRPS16 \(MRPS16 Products\)](#)

---

Background: Mammalian mitochondrial ribosomal proteins are encoded by nuclear genes and help in protein synthesis within the mitochondrion. Mitochondrial ribosomes (mitoribosomes) consist of a small 28S subunit and a large 39S subunit. They have an estimated 75 % protein to rRNA composition compared to prokaryotic ribosomes, where this ratio is reversed. Another difference between mammalian mitoribosomes and prokaryotic ribosomes is that the latter contain a 5S rRNA. Among different species, the proteins comprising the mitoribosome differ greatly in sequence, and sometimes in biochemical properties, which prevents easy recognition by sequence homology. This gene encodes a 28S subunit protein that belongs to the ribosomal protein S16P family. The encoded protein is one of the most highly conserved ribosomal proteins between mammalian and yeast mitochondria. Three pseudogenes (located at 8q21.3, 20q13.32, 22q12-q13.1) for this gene have been described.,MRPS16,CGI-132,COXPD2,MRP-S16,RPMS16,Epigenetics & Nuclear Signaling,Endocrine & Metabolism,Mitochondrial metabolism,MRPS16

---

Molecular Weight: 13 kDa/15 kDa

---

Gene ID: 51021

---

UniProt: [Q9Y3D3](#)

---

## Application Details

---

Application Notes: WB,1:500 - 1:2000,IF,1:50 - 1:200

---

Comment: HIGH QUALITY

---

Restrictions: For Research Use only

---

## Handling

---

Format: Liquid

---

Buffer: PBS with 0.02 % sodium azide,50 % glycerol, pH 7.3.

---

Preservative: Sodium azide

---

Precaution of Use: This product contains Sodium azide: a POISONOUS AND HAZARDOUS SUBSTANCE which should be handled by trained staff only.

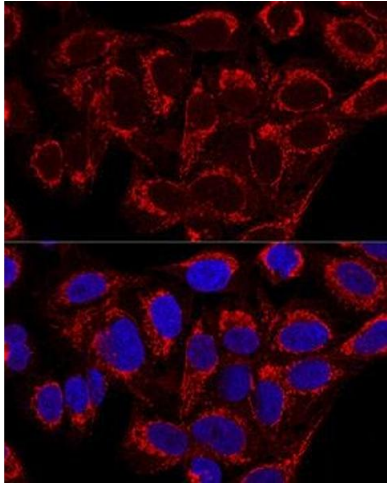
---

Storage: -20 °C

---

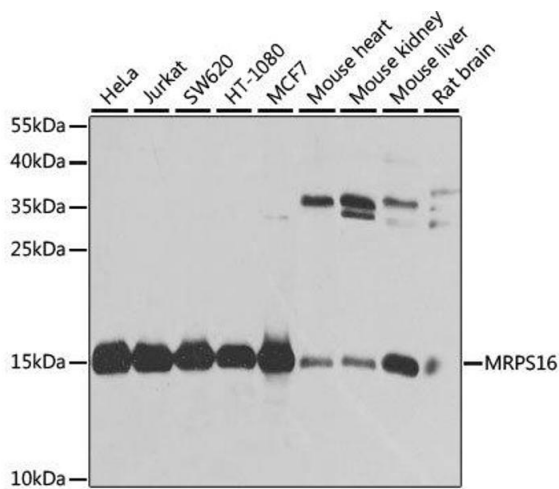
Storage Comment: Store at -20°C. Avoid freeze / thaw cycles.

---



### Immunofluorescence

**Image 1.** Confocal immunofluorescence analysis of U2OS cells using MRPS16 Polyclonal Antibody at dilution of 1:100. Blue: DAPI for nuclear staining.



### Western Blotting

**Image 2.** Western blot analysis of extracts of various cell lines, using MRPS16 antibody.