



[Go to Product page](#)

Datasheet for ABIN6144043

## anti-MRPS30 antibody (AA 190-439)

### 5 Images

#### Overview

Quantity:	100 µL
Target:	MRPS30
Binding Specificity:	AA 190-439
Reactivity:	Human
Host:	Rabbit
Clonality:	Polyclonal
Conjugate:	This MRPS30 antibody is un-conjugated
Application:	Western Blotting (WB), Immunofluorescence (IF), Immunoprecipitation (IP)

#### Product Details

Immunogen:	Recombinant fusion protein containing a sequence corresponding to amino acids 190-439 of human MRPS30 (NP_057724.2).
Sequence:	PHNPALAAAA LDYRCPVHFY WVRGEEIIPR GHRRGRIDDL RYQIDDKPNN QIRISKQLAE FVPLDYSVPI EIPTIKCKPD KLPLFKRQYE NHIFVGSKTA DPCCYGHTQF HLLPDKLRRE RLLRQNCADQ IEVFRANAI ASLFAWTGAQ AMYQGFWSEA DVTRPFVSQA VITDGKYFSF FCYQLNTLAL TTQADQNNPR KNICWGTQSK PLYETIEDND VKGFNDLVLL QIVHLLNRP KEEKSQLEN
Isotype:	IgG
Cross-Reactivity:	Human, Mouse, Rat
Characteristics:	Polyclonal Antibodies

## Target Details

---

Target:	MRPS30
Alternative Name:	MRPS30 ( <a href="#">MRPS30 Products</a> )
Background:	<p>Mammalian mitochondrial ribosomal proteins are encoded by nuclear genes and help in protein synthesis within the mitochondrion. Mitochondrial ribosomes (mitoribosomes) consist of a small 28S subunit and a large 39S subunit. They have an estimated 75 % protein to rRNA composition compared to prokaryotic ribosomes, where this ratio is reversed. Another difference between mammalian mitoribosomes and prokaryotic ribosomes is that the latter contain a 5S rRNA. Among different species, the proteins comprising the mitoribosome differ greatly in sequence, and sometimes in biochemical properties, which prevents easy recognition by sequence homology. This gene encodes a 28S subunit protein that is similar to the chicken pro-apoptotic protein p52. Transcript variants using alternative promoters or polyA sites have been mentioned in the literature but the complete description of these sequences is not available.,MRPS30,MRP-S30,PAP,PDCD9,S30mt,Epigenetics &amp; Nuclear Signaling,RNA Binding,Cell Biology &amp; Developmental Biology,Apoptosis,MRPS30</p>
Molecular Weight:	50 kDa
Gene ID:	10884
UniProt:	<a href="#">Q9NP92</a>

## Application Details

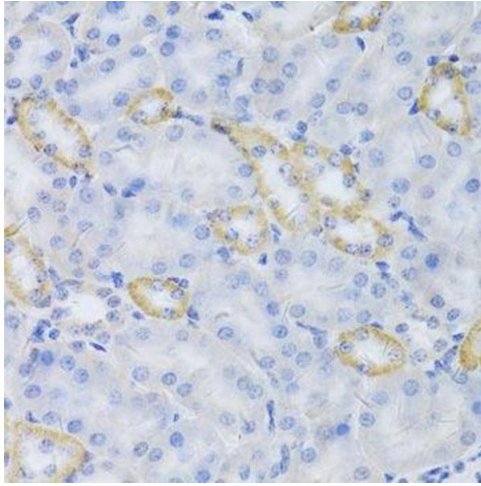
---

Application Notes:	WB,1:500 - 1:2000,IF,1:50 - 1:100,IP,1:50 - 1:200
Comment:	HIGH QUALITY
Restrictions:	For Research Use only

## Handling

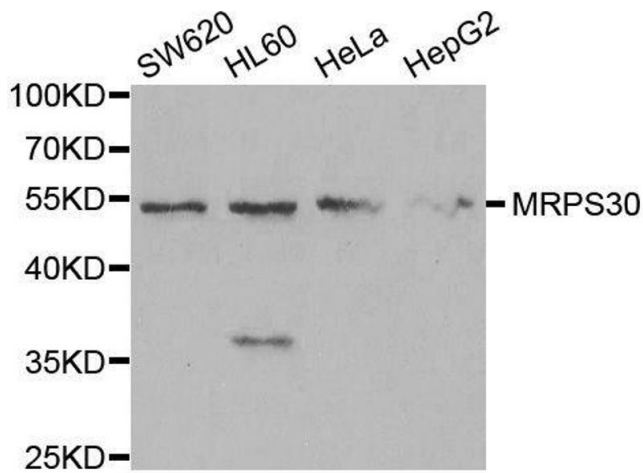
---

Format:	Liquid
Buffer:	PBS with 0.02 % sodium azide,50 % glycerol, pH 7.3.
Preservative:	Sodium azide
Precaution of Use:	This product contains Sodium azide: a POISONOUS AND HAZARDOUS SUBSTANCE which should be handled by trained staff only.
Storage:	-20 °C
Storage Comment:	Store at -20°C. Avoid freeze / thaw cycles.



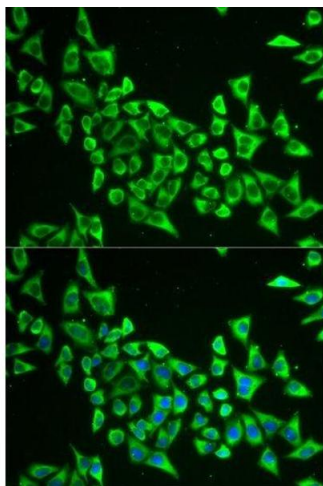
### Immunohistochemistry (Paraffin-embedded Sections)

**Image 1.** Immunohistochemistry of paraffin-embedded mouse kidney using MRPS30 Antibody.



### Western Blotting

**Image 2.** Western blot analysis of extracts of various cell lines, using MRPS30 antibody.



### Immunofluorescence

**Image 3.** Immunofluorescence analysis of U2OS cells using MRPS30 antibody.

Please check the [product details page](#) for more images. Overall 5 images are available for ABIN6144043.