

Datasheet for ABIN6144075  
**anti-MSMB antibody (AA 30-114)**[Go to Product page](#)

## 1 Image

## Overview

Quantity:	100 µL
Target:	MSMB
Binding Specificity:	AA 30-114
Reactivity:	Human
Host:	Rabbit
Clonality:	Polyclonal
Conjugate:	This MSMB antibody is un-conjugated
Application:	Western Blotting (WB)

## Product Details

Immunogen:	Recombinant fusion protein containing a sequence corresponding to amino acids 30-114 of human MSMB (NP_002434.1).
Sequence:	VPGDSTRKCM DLKGNKHPIN SEWQTDNCET CTCYETEISC CTLVSTPVG YDKDNCQRIFK KEDCKYIVVE KKDPKKTCSV SEWII
Isotype:	IgG
Cross-Reactivity:	Human, Mouse
Characteristics:	Polyclonal Antibodies

## Target Details

Target:	MSMB
---------	------

## Target Details

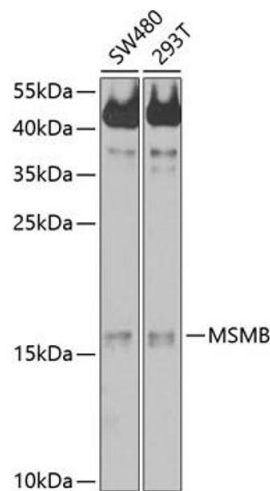
Alternative Name:	MSMB ( <a href="#">MSMB Products</a> )
Background:	<p>The protein encoded by this gene is a member of the immunoglobulin binding factor family. It is synthesized by the epithelial cells of the prostate gland and secreted into the seminal plasma.</p> <p>This protein has inhibin-like activity. It may have a role as an autocrine paracrine factor in uterine, breast and other female reproductive tissues. The expression of the encoded protein is found to be decreased in prostate cancer. Two alternatively spliced transcript variants encoding different isoforms are described for this gene. The use of alternate polyadenylation sites has been found for this gene.,MSMB,HPC13,IGBF,MSP,MSPB,PN44,PRPS,PSP,PSP-94,PSP57,PSP94,MSMB</p>
Molecular Weight:	8 kDa/12 kDa
Gene ID:	4477
UniProt:	<a href="#">P08118</a>

## Application Details

Application Notes:	WB,1:500 - 1:2000
Restrictions:	For Research Use only

## Handling

Format:	Liquid
Buffer:	PBS with 0.02 % sodium azide,50 % glycerol, pH 7.3.
Preservative:	Sodium azide
Precaution of Use:	This product contains Sodium azide: a POISONOUS AND HAZARDOUS SUBSTANCE which should be handled by trained staff only.
Storage:	-20 °C
Storage Comment:	Store at -20°C. Avoid freeze / thaw cycles.



### Western Blotting

**Image 1.** Western blot analysis of extracts of various cell lines, using MSMB antibody (ABIN6132566, ABIN6144075, ABIN6144077 and ABIN6214225) at 1:1000 dilution. Secondary antibody: HRP Goat Anti-Rabbit IgG (H+L) (ABIN1684268 and ABIN3020597) at 1:10000 dilution. Lysates/proteins: 25 µg per lane. Blocking buffer: 3 % nonfat dry milk in TBST. Detection: ECL Basic Kit (RM00020). Exposure time: 60s.