

Datasheet for ABIN6144089  
**anti-MSRB1 antibody (AA 1-94)**[Go to Product page](#)

## 2 Images

## Overview

Quantity:	100 µL
Target:	MSRB1 (SEPX1)
Binding Specificity:	AA 1-94
Reactivity:	Human
Host:	Rabbit
Clonality:	Polyclonal
Conjugate:	This MSRB1 antibody is un-conjugated
Application:	Western Blotting (WB), Immunofluorescence (IF)

## Product Details

Immunogen:	Recombinant fusion protein containing a sequence corresponding to amino acids 1-94 of human MSRB1 (NP_057416.1).
Sequence:	MSFCSFFGGE VFQNHFEPLGV YVCAKCGYEL FSSRSKYAHS SPWPAFTETI HADSVAKRPE HNRSEALKVS CGKCGNGLGH EFLNDGPKPG QSRF
Isotype:	IgG
Cross-Reactivity:	Human, Mouse, Rat
Characteristics:	Polyclonal Antibodies

## Target Details

Target:	MSRB1 (SEPX1)
---------	---------------

## Target Details

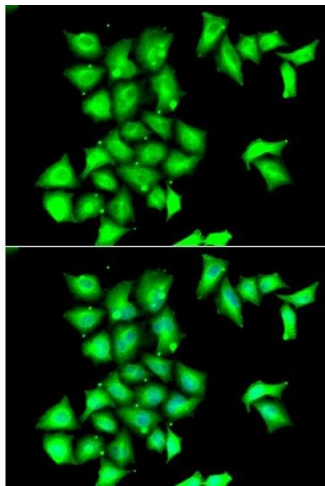
Alternative Name:	MSRB1 ( <a href="#">SEPX1 Products</a> )
Background:	<p>This gene encodes a selenoprotein, which contains a selenocysteine (Sec) residue at its active site. The selenocysteine is encoded by the UGA codon that normally signals translation termination. The 3' UTR of selenoprotein genes have a common stem-loop structure, the sec insertion sequence (SECIS), that is necessary for the recognition of UGA as a Sec codon rather than as a stop signal. This protein belongs to the methionine sulfoxide reductase (Msr) protein family which includes repair enzymes that reduce oxidized methionine residues in proteins. The protein encoded by this gene is expressed in a variety of adult and fetal tissues and localizes to the cell nucleus and cytosol.,MSRB1,HSPC270,SELR,SELX,SEPX1,SepR,Cancer,Signal Transduction,Cell Biology &amp; Developmental Biology,Endocrine &amp; Metabolism,Amino acid metabolism,MSRB1</p>
Molecular Weight:	12 kDa
Gene ID:	51734
UniProt:	<a href="#">Q9NZV6</a>

## Application Details

Application Notes:	WB,1:500 - 1:2000,IF,1:50 - 1:100
Comment:	HIGH QUALITY
Restrictions:	For Research Use only

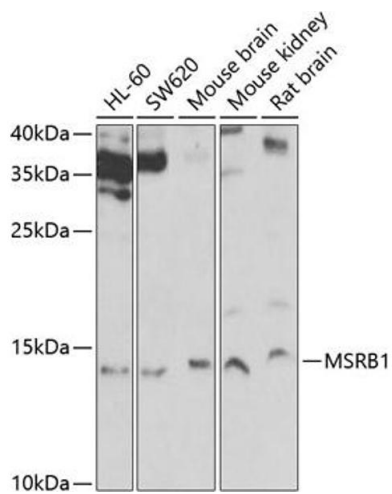
## Handling

Format:	Liquid
Buffer:	PBS with 0.02 % sodium azide,50 % glycerol, pH 7.3.
Preservative:	Sodium azide
Precaution of Use:	This product contains Sodium azide: a POISONOUS AND HAZARDOUS SUBSTANCE which should be handled by trained staff only.
Storage:	-20 °C
Storage Comment:	Store at -20°C. Avoid freeze / thaw cycles.



### Immunofluorescence

**Image 1.** Immunofluorescence analysis of HeLa cells using MSRB1 antibody (ABIN6129123, ABIN6144089, ABIN6144090 and ABIN6222462). Blue: DAPI for nuclear staining.



### Western Blotting

**Image 2.** Western blot analysis of extracts of various cell lines, using MSRB1 Antibody (ABIN6129123, ABIN6144089, ABIN6144090 and ABIN6222462) at 1:1000 dilution. Secondary antibody: HRP Goat Anti-Rabbit IgG (H+L) (ABIN1684268 and ABIN3020597) at 1:10000 dilution. Lysates/proteins: 25 µg per lane. Blocking buffer: 3 % nonfat dry milk in TBST. Detection: ECL Basic Kit (RM00020). Exposure time: 30s.