



[Go to Product page](#)

Datasheet for ABIN6144095  
**anti-MST1 antibody (AA 200-500)**

4 Images

Overview

Quantity:	100 µL
Target:	MST1
Binding Specificity:	AA 200-500
Reactivity:	Human
Host:	Rabbit
Clonality:	Polyclonal
Conjugate:	This MST1 antibody is un-conjugated
Application:	Western Blotting (WB), Immunohistochemistry (IHC), Immunofluorescence (IF)

Product Details

Immunogen:	Recombinant fusion protein containing a sequence corresponding to amino acids 200-500 of human MSP/MST1 (NP_066278.3).
Sequence:	CREAACVWCN GEEYRGAVDR TESGRECQRW DLQHPHQHPF EPGKFLDQGL DDNYCRNPDG SERPWCYTTD PQIEREFCDL PRCGSEAQPR QEATTVSCFR GKGEgyrgta NTTTTAGVPCQ RWDAQIPHQH RFTPEKYACK DLRENFCRNP DGSEAPWCFT LRPGMRAAFC YQIRRCTDDV RPQDCYHGAG EQYRGTVSKT RKGVCQQRWS AETPHKQFT FTSEPHAQLE ENFCRNPDGD SHGPWCYTMD PRTPFDYCAL RRCADDQPPS ILDPPDQVQF EKCGKRVDR L DQRRSKLRV V G
Isotype:	IgG
Cross-Reactivity:	Human, Mouse, Rat
Characteristics:	Polyclonal Antibodies
Purification:	Affinity purification

## Target Details

---

Target:	MST1
Alternative Name:	MSP/MST1 ( <a href="#">MST1 Products</a> )
Background:	<p>The protein encoded by this gene contains four kringle domains and a serine protease domain, similar to that found in hepatic growth factor. Despite the presence of the serine protease domain, the encoded protein may not have any proteolytic activity. The receptor for this protein is RON tyrosine kinase, which upon activation stimulates ciliary motility of ciliated epithelial lung cells. This protein is secreted and cleaved to form an alpha chain and a beta chain bridged by disulfide bonds.,MST1,D3F15S2,DNF15S2,HGFL,MSP,NF15S2,Epigenetics &amp; Nuclear Signaling,Chromatin Modifying Enzymes,Phosphorylation,Cancer,Tumor biomarkers,Signal Transduction,Kinase,Immunology &amp; Inflammation,Cell Intrinsic Innate Immunity Signaling Pathway,MSP/MST1</p>
Molecular Weight:	80 kDa
Gene ID:	4485
UniProt:	<a href="#">P26927</a>

## Application Details

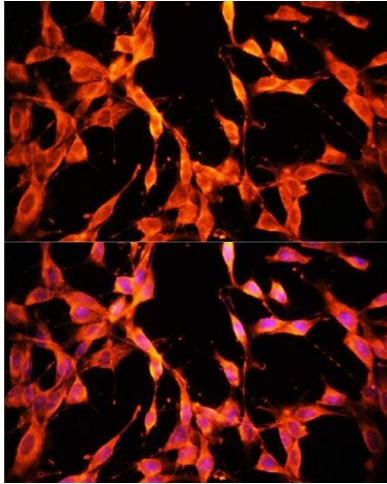
---

Application Notes:	WB,1:500 - 1:2000,IHC,1:50 - 1:200,IF,1:50 - 1:200
Comment:	HIGH QUALITY
Restrictions:	For Research Use only

## Handling

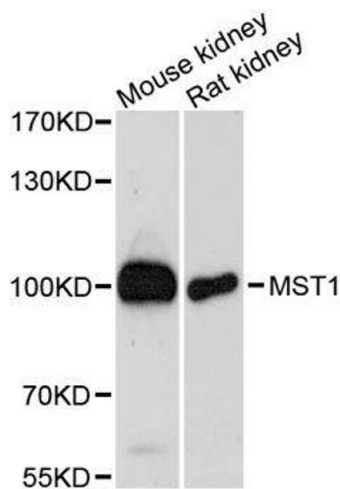
---

Format:	Liquid
Buffer:	PBS with 0.02 % sodium azide,50 % glycerol, pH 7.3.
Preservative:	Sodium azide
Precaution of Use:	This product contains Sodium azide: a POISONOUS AND HAZARDOUS SUBSTANCE which should be handled by trained staff only.
Storage:	-20 °C
Storage Comment:	Store at -20°C. Avoid freeze / thaw cycles.



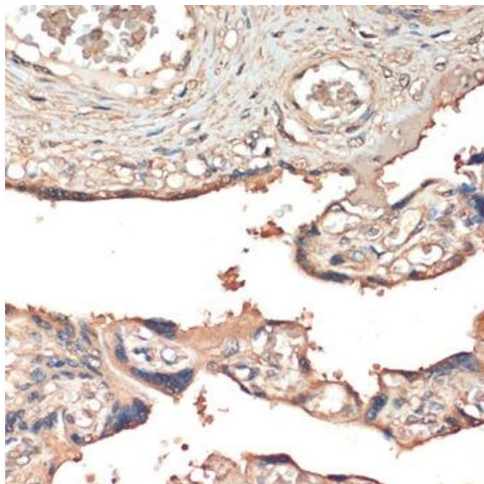
### Immunofluorescence

**Image 1.** Immunofluorescence analysis of NIH/3T3 cells using MSP/MST1 antibody (ABIN6132374, ABIN6144095, ABIN6144096 and ABIN6216790) at dilution of 1:100. Blue: DAPI for nuclear staining.



### Western Blotting

**Image 2.** Western blot analysis of extracts of various cell lines, using MST1 antibody.



### Immunohistochemistry

**Image 3.** Immunohistochemistry of paraffin-embedded human placenta using MSP/MST1 antibody (ABIN6132374, ABIN6144095, ABIN6144096 and ABIN6216790) at dilution of 1:200 (40x lens). Perform microwave antigen retrieval with 10 mM PBS buffer pH 7.2 before commencing with IHC staining protocol.

Please check the [product details page](#) for more images. Overall 4 images are available for ABIN6144095.