

Datasheet for ABIN6144107
anti-MT-ND2 antibody (AA 50-150)



[Go to Product page](#)

1 Image

1 Publication

Overview

Quantity:	100 µL
Target:	MT-ND2
Binding Specificity:	AA 50-150
Reactivity:	Mouse
Host:	Rabbit
Clonality:	Polyclonal
Conjugate:	This MT-ND2 antibody is un-conjugated
Application:	Western Blotting (WB)

Product Details

Immunogen:	A synthetic peptide corresponding to a sequence within amino acids 50-150 of mouse MT-ND2 (NP_904329.1).
Sequence:	PRSTEAATKY FVTQATASMI ILLAIVLNYK QLGTWMFQQQ TNGLILNMTL MALSMKLGLA PFHFWLPEVT QGIPLHMGLI LLTWQKIAPL SILIQIYPLL N
Isotype:	IgG
Cross-Reactivity:	Mouse, Rat
Characteristics:	Polyclonal Antibodies

Target Details

Target:	MT-ND2
---------	--------

Target Details

Alternative Name:	MT-ND2 (MT-ND2 Products)
Background:	MT-ND2,MTND2,ND2,Endocrine & Metabolism,Mitochondrial metabolism,Neuroscience,Neurodegenerative Diseases,MT-ND2
Molecular Weight:	38 kDa
Gene ID:	17717

Application Details

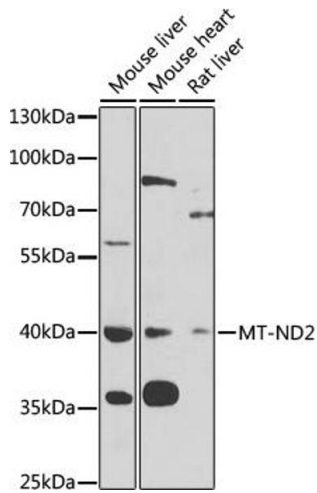
Application Notes:	WB,1:500 - 1:1000
Restrictions:	For Research Use only

Handling

Format:	Liquid
Buffer:	PBS with 0.02 % sodium azide,50 % glycerol, pH 7.3.
Preservative:	Sodium azide
Precaution of Use:	This product contains Sodium azide: a POISONOUS AND HAZARDOUS SUBSTANCE which should be handled by trained staff only.
Storage:	-20 °C
Storage Comment:	Store at -20°C. Avoid freeze / thaw cycles.

Publications

Product cited in:	Hu, Nie, Chen, Xie, Fan, Wang, Long, Yan, Zhong, Yan: "Leucine reduces reactive oxygen species levels via an energy metabolism switch by activation of the mTOR-HIF-1 α pathway in porcine intestinal epithelial cells." in: The international journal of biochemistry & cell biology , Vol. 89, pp. 42-56, (2017) (PubMed).
-------------------	--



Western Blotting

Image 1. Western blot analysis of extracts of various cell lines, using MT-ND2 antibody (ABIN6135113, ABIN6144107, ABIN6144108 and ABIN6221773) at 1:1000 dilution. Secondary antibody: HRP Goat Anti-Rabbit IgG (H+L) (ABIN1684268 and ABIN3020597) at 1:10000 dilution. Lysates/proteins: 25 µg per lane. Blocking buffer: 3 % nonfat dry milk in TBST. Detection: ECL Basic Kit (RM00020). Exposure time: 90s.