



Datasheet for ABIN6144117
anti-MTA3 antibody (AA 40-330)



[Go to Product page](#)

3 Images

Overview

Quantity:	100 µL
Target:	MTA3
Binding Specificity:	AA 40-330
Reactivity:	Human
Host:	Rabbit
Clonality:	Polyclonal
Conjugate:	This MTA3 antibody is un-conjugated
Application:	Western Blotting (WB), Immunohistochemistry (IHC)

Product Details

Immunogen:	Recombinant fusion protein containing a sequence corresponding to amino acids 40-330 of human MTA3 (NP_065795.1).
Sequence:	AKVVCFYRRR DISNTLIMLA DKHAKIEIEE SETTVEADLT DKQKHQLKHR ELFLSRQYES LPATHIRGKC SVALLNETES VLSYLDKEDT FFYSLVYDPS LKTLLADKGE IRVGPRYQAD IPEMLLEGES DEREQSKLEV KVWDPNSPLT DRQIDQFLVV ARAVGTFAFA LDCSSSVRQP SLHMSAAAAS RDITLFHAMD TLYRHSYDLS SAISVLVPLG GPVLCRDEME EWSASEASLF EEALEKYGKD FNDIRQDFLP WKSLTSIIEY YYMWKTTDRY VQQKRLKAAE A
Isotype:	IgG
Cross-Reactivity:	Human, Mouse, Rat
Characteristics:	Polyclonal Antibodies

Target Details

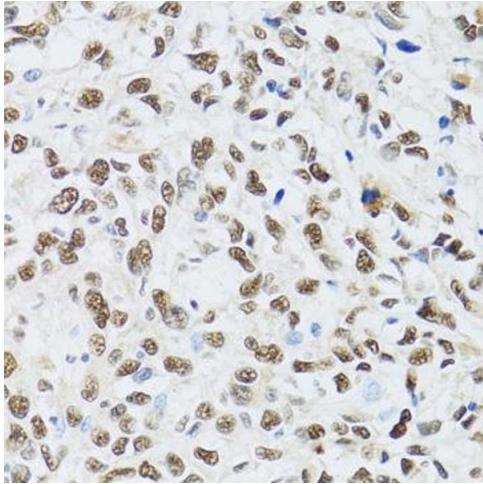
Target:	MTA3
Alternative Name:	MTA3 (MTA3 Products)
Background:	Plays a role in maintenance of the normal epithelial architecture through the repression of SNAI1 transcription in a histone deacetylase-dependent manner, and thus the regulation of E-cadherin levels. Contributes to transcriptional repression by BCL6.,MTA3,Epigenetics & Nuclear Signaling,Nuclear Receptor Signaling,Nuclear hormone receptors,Chromatin Remodeling,Cancer,Signal Transduction,Cell Biology & Developmental Biology,Growth factor,MTA3
Molecular Weight:	58 kDa/67 kDa
Gene ID:	57504
UniProt:	Q9BTC8
Pathways:	Chromatin Binding

Application Details

Application Notes:	WB,1:500 - 1:2000,IHC,1:50 - 1:200
Restrictions:	For Research Use only

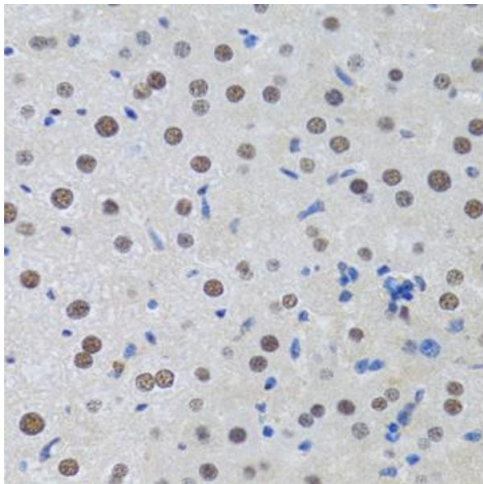
Handling

Format:	Liquid
Buffer:	PBS with 0.02 % sodium azide,50 % glycerol, pH 7.3.
Preservative:	Sodium azide
Precaution of Use:	This product contains Sodium azide: a POISONOUS AND HAZARDOUS SUBSTANCE which should be handled by trained staff only.
Storage:	-20 °C
Storage Comment:	Store at -20°C. Avoid freeze / thaw cycles.



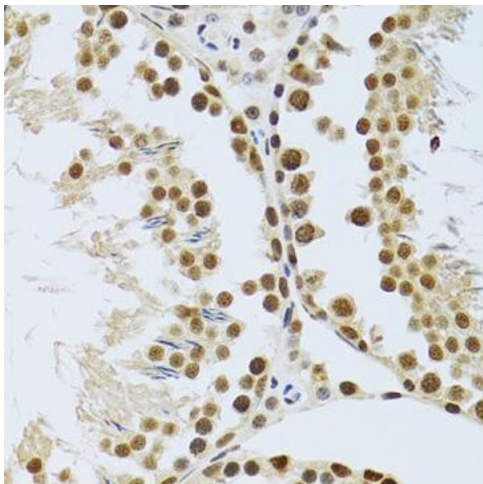
Immunohistochemistry

Image 1. Immunohistochemistry of paraffin-embedded human liver cancer using MT antibody (ABIN6128251, ABIN6144117, ABIN6144118 and ABIN6222360) at dilution of 1:100 (40x lens). Perform microwave antigen retrieval with 10 mM PBS buffer pH 7.2 before commencing with IHC staining protocol.



Immunohistochemistry

Image 2. Immunohistochemistry of paraffin-embedded rat liver using MT antibody (ABIN6128251, ABIN6144117, ABIN6144118 and ABIN6222360) at dilution of 1:100 (40x lens). Perform microwave antigen retrieval with 10 mM PBS buffer pH 7.2 before commencing with IHC staining protocol.



Immunohistochemistry

Image 3. Immunohistochemistry of paraffin-embedded mouse testis using MT antibody (ABIN6128251, ABIN6144117, ABIN6144118 and ABIN6222360) at dilution of 1:100 (40x lens). Perform microwave antigen retrieval with 10 mM PBS buffer pH 7.2 before commencing with IHC staining protocol.