

Datasheet for ABIN6144125
anti-MTCH2 antibody (AA 30-175)



[Go to Product page](#)

3 Images

Overview

Quantity:	100 µL
Target:	MTCH2
Binding Specificity:	AA 30-175
Reactivity:	Human
Host:	Rabbit
Clonality:	Polyclonal
Conjugate:	This MTCH2 antibody is un-conjugated
Application:	Western Blotting (WB), Immunohistochemistry (IHC), Immunofluorescence (IF)

Product Details

Immunogen:	Recombinant fusion protein containing a sequence corresponding to amino acids 30-175 of human MTCH2 (NP_055157.1).
Sequence:	VGYEPLPPTI GRNIFGRQVC QLPGLFSY AQ HIASIDGRRG LFTGLTPRLC SGVLGTVVHG KVLQHYQESD KGEELGPGNV QKEVSSSFDH VIKETTREMI ARSAATLITH PFHVITLRSM VQFIGRESKY CGLCDSIITI YREEGI
Isotype:	IgG
Cross-Reactivity:	Human, Mouse
Characteristics:	Polyclonal Antibodies

Target Details

Target:	MTCH2
---------	-------

Target Details

Alternative Name: MTCH2 ([MTCH2 Products](#))

Background: This gene encodes a member of the SLC25 family of nuclear-encoded transporters that are localized in the inner mitochondrial membrane. Members of this superfamily are involved in many metabolic pathways and cell functions. Genome-wide association studies in human have identified single-nucleotide polymorphisms in several loci associated with obesity. This gene is one such locus, which is highly expressed in white adipose tissue and adipocytes, and thought to play a regulatory role in adipocyte differentiation and biology. Alternatively spliced transcript variants encoding different isoforms have been found for this gene. A recent study showed this gene to be an authentic stop codon readthrough target, and that its mRNA can give rise to an additional C-terminally extended isoform by use of an alternative in-frame translation termination codon.,MTCH2,HSPC032,MIMP,SLC25A50,Cancer,Signal Transduction,Cell Biology & Developmental Biology,Apoptosis,Endocrine & Metabolism,Mitochondrial metabolism,Mitochondrial markers,MTCH2

Molecular Weight: 33 kDa

Gene ID: 23788

UniProt: [Q9Y6C9](#)

Application Details

Application Notes: WB,1:1000 - 1:3000,IHC,1:50 - 1:200,IF,1:50 - 1:200

Comment: HIGH QUALITY

Restrictions: For Research Use only

Handling

Format: Liquid

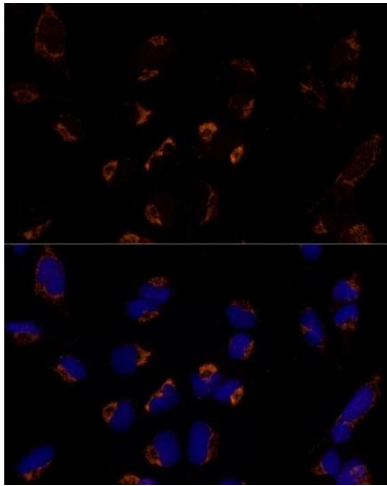
Buffer: PBS with 0.02 % sodium azide,50 % glycerol, pH 7.3.

Preservative: Sodium azide

Precaution of Use: This product contains Sodium azide: a POISONOUS AND HAZARDOUS SUBSTANCE which should be handled by trained staff only.

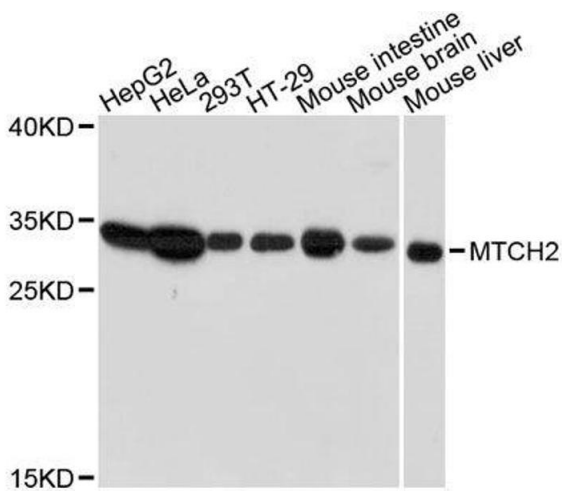
Storage: -20 °C

Storage Comment: Store at -20°C. Avoid freeze / thaw cycles.



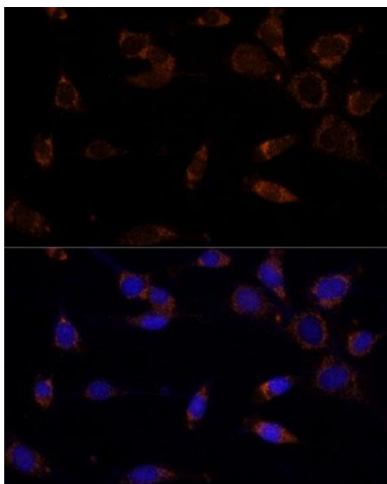
Immunofluorescence

Image 1. Immunofluorescence analysis of U-2 OS cells using MTCH2 Polyclonal Antibody at dilution of 1:100 (40x lens). Blue: DAPI for nuclear staining.



Western Blotting

Image 2. Western blot analysis of extracts of various cell lines, using MTCH2 antibody.



Immunofluorescence

Image 3. Immunofluorescence analysis of NIH-3T3 cells using MTCH2 Polyclonal Antibody at dilution of 1:100 (40x lens). Blue: DAPI for nuclear staining.