



[Go to Product page](#)

Datasheet for ABIN6144154
anti-MTMR14 antibody (AA 1-280)

2 Images

Overview

Quantity:	100 µL
Target:	MTMR14
Binding Specificity:	AA 1-280
Reactivity:	Human
Host:	Rabbit
Clonality:	Polyclonal
Conjugate:	This MTMR14 antibody is un-conjugated
Application:	Western Blotting (WB), Immunofluorescence (IF), Immunohistochemistry (IHC)

Product Details

Immunogen:	Recombinant fusion protein containing a sequence corresponding to amino acids 1-280 of human MTMR14 (NP_001070993.1).
Sequence:	MAGARAAAAA ASAGSSASSG NQPPQELGLG ELLEEFSTRQ YRAKDGGSTG GSKVERIEKR CLELFGDRYC FSVIPNTNGD ICGHYPRHIV FLEYESSEKE KDTFESTVQV SKLQDLIHR KMARCRGRFV CPVILFKGKH ICRSATLAGW GELYGRSGYN YFFSGGADDA WADVEDVTEE DCALRSGDTH LFDKVRGYDI KLLRYLSVKY ICDLMVENKK VKFGMNVTSSEKVDKAQRYA DFTLLSIPYP GCEFFKEYKD RDYMAEGLIF NWKQDYVDAP
Isotype:	IgG
Cross-Reactivity:	Human, Mouse, Rat
Characteristics:	Polyclonal Antibodies

Target Details

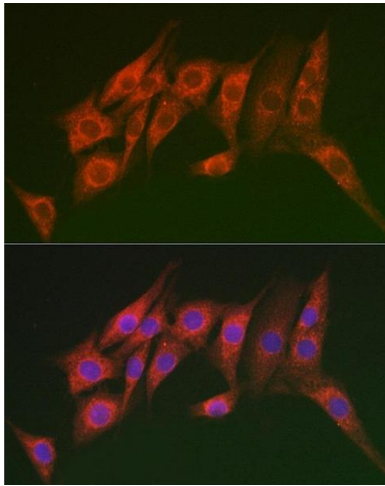
Target:	MTMR14
Alternative Name:	MTMR14 (MTMR14 Products)
Background:	This gene encodes a myotubularin-related protein. The encoded protein is a phosphoinositide phosphatase that specifically dephosphorylates phosphatidylinositol 3,5-biphosphate and phosphatidylinositol 3-phosphate. Mutations in this gene are correlated with autosomal dominant centronuclear myopathy. Alternate splicing results in multiple transcript variants. A pseudogene of this gene is found on chromosome 18.,MTMR14,C3orf29,Signal Transduction,Cell Biology & Developmental Biology,Autophagy,Regulators,MTMR14
Molecular Weight:	60 kDa/66 kDa/72 kDa
Gene ID:	64419
UniProt:	Q8NCE2
Pathways:	Inositol Metabolic Process

Application Details

Application Notes:	WB,1:500 - 1:2000,IHC,1:50 - 1:200,IF,1:50 - 1:200
Comment:	HIGH QUALITY
Restrictions:	For Research Use only

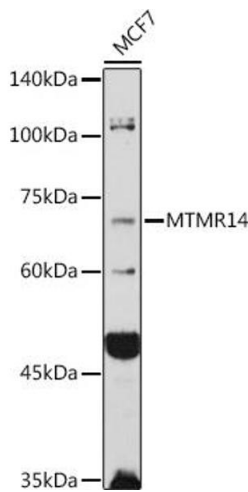
Handling

Format:	Liquid
Buffer:	PBS with 0.02 % sodium azide,50 % glycerol, pH 7.3.
Preservative:	Sodium azide
Precaution of Use:	This product contains Sodium azide: a POISONOUS AND HAZARDOUS SUBSTANCE which should be handled by trained staff only.
Storage:	-20 °C
Storage Comment:	Store at -20°C. Avoid freeze / thaw cycles.



Immunofluorescence

Image 1. Immunofluorescence analysis of NIH/3T3 cells using MTMR14 Rabbit pAb (ABIN6129695, ABIN6144154, ABIN6144155 and ABIN6223372) at dilution of 1:100 (40x lens). Blue: DAPI for nuclear staining.



Western Blotting

Image 2. Western blot analysis of extracts of MCF7 cells, using MTMR14 antibody (ABIN6129695, ABIN6144154, ABIN6144155 and ABIN6223372) at 1:1000 dilution. Secondary antibody: HRP Goat Anti-Rabbit IgG (H+L) (ABIN1684268 and ABIN3020597) at 1:10000 dilution. Lysates/proteins: 25 µg per lane. Blocking buffer: 3 % nonfat dry milk in TBST. Detection: ECL Basic Kit (RM00020). Exposure time: 180s.