



[Go to Product page](#)

Datasheet for ABIN6144228  
**anti-MYD88 antibody (AA 60-309)**

4 Images

Overview

Quantity:	100 µL
Target:	MYD88
Binding Specificity:	AA 60-309
Reactivity:	Human
Host:	Rabbit
Clonality:	Polyclonal
Conjugate:	This MYD88 antibody is un-conjugated
Application:	Western Blotting (WB), Immunohistochemistry (IHC)

Product Details

Immunogen:	Recombinant fusion protein containing a sequence corresponding to amino acids 60-309 of human MyD88 (NP_002459.2).
Sequence:	WTALAEEMDF EYLEIRQLET QADPTGRLLD AWQGRPGASV GRLLELLTKL GRDDVLELGG PSIEEDCQKY ILKQQQEEAE KPLQVAAVDS SVPRTAELAG ITTLDDPLGH MPERFDAFIC YCPSDIQFVQ EMIRQLEQTN YRLKLCVSDR DVLPGTCVWS IASELIEKRC RRMVVVVSSDD YLQSKECDFQ TKFALSLSPG AHQKRLIPIK YKAMKKEFPS ILRFITVCDY TNPCTKSWFW TRLAKALSLP
Isotype:	IgG
Cross-Reactivity:	Human, Rat
Characteristics:	Polyclonal Antibodies

## Target Details

---

Target:	MYD88
Alternative Name:	MYD88 ( <a href="#">MYD88 Products</a> )
Background:	<p>This gene encodes a cytosolic adapter protein that plays a central role in the innate and adaptive immune response. This protein functions as an essential signal transducer in the interleukin-1 and Toll-like receptor signaling pathways. These pathways regulate that activation of numerous proinflammatory genes. The encoded protein consists of an N-terminal death domain and a C-terminal Toll-interleukin1 receptor domain. Patients with defects in this gene have an increased susceptibility to pyogenic bacterial infections. Alternate splicing results in multiple transcript variants.,MYD88,MYD88D,myeloid differentiation primary response 88,MyD88,Signal Transduction,Immunology &amp; Inflammation,NF-kB Signaling Pathway,Toll-like Receptor Signaling Pathway,Cell Intrinsic Innate Immunity Signaling Pathway,TLR Signaling,Cardiovascular,MYD88</p>
Molecular Weight:	15 kDa/20 kDa/28 kDa/31 kDa/33 kDa/34 kDa
Gene ID:	4615
UniProt:	<a href="#">Q99836</a>
Pathways:	<a href="#">NF-kappaB Signaling</a> , <a href="#">TLR Signaling</a> , <a href="#">Neurotrophin Signaling Pathway</a> , <a href="#">Activation of Innate immune Response</a> , <a href="#">Cellular Response to Molecule of Bacterial Origin</a> , <a href="#">Positive Regulation of Immune Effector Process</a> , <a href="#">Production of Molecular Mediator of Immune Response</a> , <a href="#">Toll-Like Receptors Cascades</a>

## Application Details

---

Application Notes:	WB,1:500 - 1:2000,IHC,1:50 - 1:200
Restrictions:	For Research Use only

## Handling

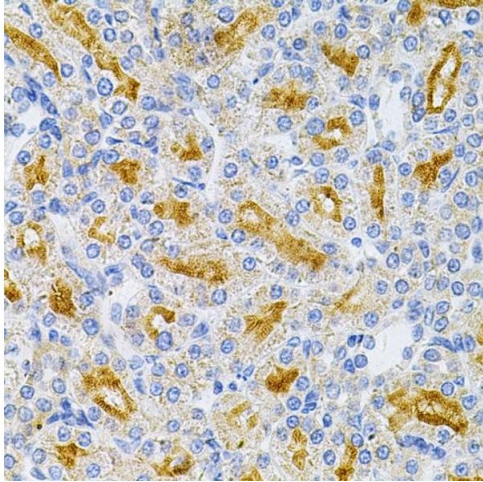
---

Format:	Liquid
Buffer:	PBS with 0.02 % sodium azide,50 % glycerol, pH 7.3.
Preservative:	Sodium azide
Precaution of Use:	This product contains Sodium azide: a POISONOUS AND HAZARDOUS SUBSTANCE which should be handled by trained staff only.
Storage:	-20 °C

## Handling

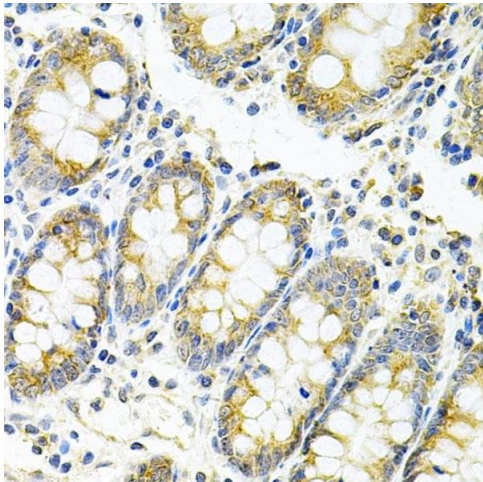
Storage Comment: Store at -20°C. Avoid freeze / thaw cycles.

## Images



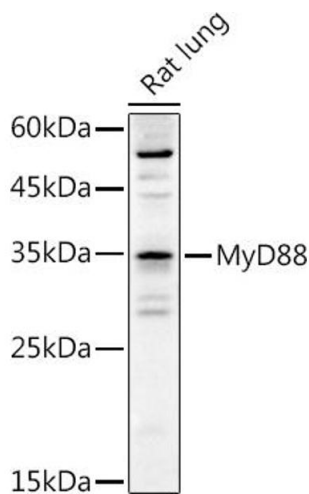
### Immunohistochemistry

**Image 1.** Immunohistochemistry of paraffin-embedded rat kidney using MyD88 Antibody (ABIN6128257, ABIN6144228, ABIN6144229 and ABIN6213986) at dilution of 1:100 (40x lens). Perform microwave antigen retrieval with 10 mM PBS buffer pH 7.2 before commencing with IHC staining protocol.



### Immunohistochemistry

**Image 2.** Immunohistochemistry of paraffin-embedded human colon using MyD88 Antibody (ABIN6128257, ABIN6144228, ABIN6144229 and ABIN6213986) at dilution of 1:100 (40x lens). Perform microwave antigen retrieval with 10 mM PBS buffer pH 7.2 before commencing with IHC staining protocol.



### Western Blotting

**Image 3.** Western blot analysis of extracts of Rat lung, using MyD88 antibody (ABIN6128257, ABIN6144228, ABIN6144229 and ABIN6213986) at 1:1000 dilution. Secondary antibody: HRP Goat Anti-Rabbit IgG (H+L) (ABIN1684268 and ABIN3020597) at 1:10000 dilution. Lysates/proteins: 25 µg per lane. Blocking buffer: 3 % nonfat dry milk in TBST. Detection: ECL Enhanced Kit (RM00021). Exposure time: 90s.

Please check the [product details page](#) for more images. Overall 4 images are available for ABIN6144228.