



[Go to Product page](#)

Datasheet for ABIN6144255
anti-MYL6 antibody (AA 1-151)

1 Image

Overview

Quantity:	100 µL
Target:	MYL6
Binding Specificity:	AA 1-151
Reactivity:	Human
Host:	Rabbit
Clonality:	Polyclonal
Conjugate:	This MYL6 antibody is un-conjugated
Application:	Western Blotting (WB)

Product Details

Immunogen:	Recombinant fusion protein containing a sequence corresponding to amino acids 1-151 of human MYL6 (NP_066299.2).
Sequence:	MCDFTEDQTA EFKEAFQLFD RTGDGKILYS QCGDVMRALG QNPTNAEVLK VLGNPKSDEM NVKVLDFEHF LPMLQTVAKN KDQGTIEDYV EGLRVFDKEG NGTVMGAEIR HVLVTLGKEM TEEEVEMLVA GHEDSNGCIN YEAFVRHILS G
Isotype:	IgG
Cross-Reactivity:	Human, Mouse
Characteristics:	Polyclonal Antibodies

Target Details

Target:	MYL6
---------	------

Target Details

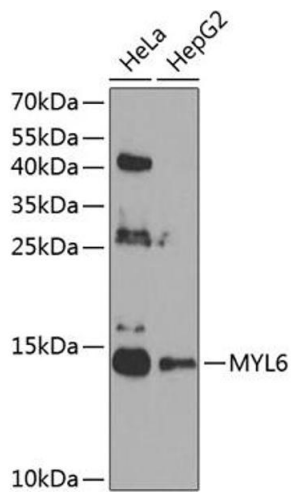
Alternative Name:	MYL6 (MYL6 Products)
Background:	<p>Myosin is a hexameric ATPase cellular motor protein. It is composed of two heavy chains, two nonphosphorylatable alkali light chains, and two phosphorylatable regulatory light chains. This gene encodes a myosin alkali light chain that is expressed in smooth muscle and non-muscle tissues. Genomic sequences representing several pseudogenes have been described and two transcript variants encoding different isoforms have been identified for this gene.,MYL6,ESMLC,LC17,LC17-GI,LC17-NM,LC17A,LC17B,MLC-3,MLC1SM,MLC3NM,MLC3SM,Signal Transduction,Cell Biology & Developmental Biology,Cytoskeleton,Motor Proteins,Actins,MYL6</p>
Molecular Weight:	16 kDa
Gene ID:	4637
UniProt:	P60660

Application Details

Application Notes:	WB,1:500 - 1:2000
Restrictions:	For Research Use only

Handling

Format:	Liquid
Buffer:	PBS with 0.02 % sodium azide,50 % glycerol, pH 7.3.
Preservative:	Sodium azide
Precaution of Use:	This product contains Sodium azide: a POISONOUS AND HAZARDOUS SUBSTANCE which should be handled by trained staff only.
Storage:	-20 °C
Storage Comment:	Store at -20°C. Avoid freeze / thaw cycles.



Western Blotting

Image 1. Western blot analysis of extracts of various cell lines, using MYL6 antibody (ABIN6129612, ABIN6144255, ABIN6144257 and ABIN6224653) at 1:1000 dilution. Secondary antibody: HRP Goat Anti-Rabbit IgG (H+L) (ABIN1684268 and ABIN3020597) at 1:10000 dilution. Lysates/proteins: 25 µg per lane. Blocking buffer: 3 % nonfat dry milk in TBST. Detection: ECL Enhanced Kit (RM00021). Exposure time: 60s.