



[Go to Product page](#)

Datasheet for ABIN6144376
anti-NAT10 antibody (AA 1-250)

2 Images

Overview

Quantity:	100 µL
Target:	NAT10
Binding Specificity:	AA 1-250
Reactivity:	Human
Host:	Rabbit
Clonality:	Polyclonal
Conjugate:	This NAT10 antibody is un-conjugated
Application:	Western Blotting (WB), Immunofluorescence (IF)

Product Details

Immunogen:	Recombinant fusion protein containing a sequence corresponding to amino acids 1-250 of human NAT10 (NP_078938.2).
Sequence:	MHRKKVDNRI RILIENGLVAE RQRSLFVVVG DRGKDQVVIL HHMLSKATVK ARPSVLWCYK KELGFSSHRK KRMRQLQKKI KNGTLNIKQD DPFELFIAAT NIRYCYNET HKILGNTFGM CVLQDFEALT PNLLARTVET VEGGGLVVIL LRTMNSLKQL YVTMDVHSR YRTEAHQDVV GRFNERFILS LASCKKCLVI DDQLNILPIS SHVATMEALP PQTPDESLGP SDLELRELKE SLQDTQPGV
Isotype:	IgG
Cross-Reactivity:	Human, Rat
Characteristics:	Polyclonal Antibodies

Target Details

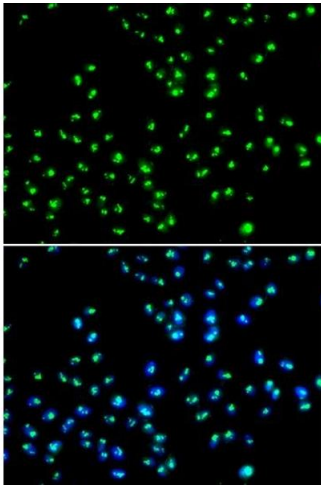
Target:	NAT10
Alternative Name:	NAT10 (NAT10 Products)
Background:	The protein encoded by this gene is an RNA cytidine acetyltransferase involved in histone acetylation, tRNA acetylation, the biosynthesis of 18S rRNA, and the enhancement of nuclear architecture and chromatin organization.,NAT10,ALP,NET43,Kre33,Epigenetics & Nuclear Signaling,DNA Damage & Repair,RNA Binding,Signal Transduction,Cell Biology & Developmental Biology,Cell Cycle,Cytoskeleton,Microtubules,Immunology & Inflammation,Cytokines,NAT10
Molecular Weight:	107 kDa/115 kDa
Gene ID:	55226
UniProt:	Q9H0A0

Application Details

Application Notes:	WB,1:500 - 1:2000,IF,1:50 - 1:100
Restrictions:	For Research Use only

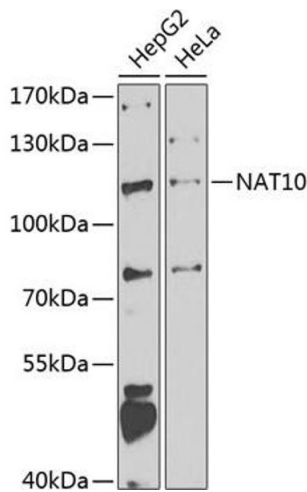
Handling

Format:	Liquid
Buffer:	PBS with 0.02 % sodium azide,50 % glycerol, pH 7.3.
Preservative:	Sodium azide
Precaution of Use:	This product contains Sodium azide: a POISONOUS AND HAZARDOUS SUBSTANCE which should be handled by trained staff only.
Storage:	-20 °C
Storage Comment:	Store at -20°C. Avoid freeze / thaw cycles.



Immunofluorescence

Image 1. Immunofluorescence analysis of MCF-7 cells using N antibody (ABIN6132968, ABIN6144376, ABIN6144377 and ABIN6223123). Blue: DAPI for nuclear staining.



Western Blotting

Image 2. Western blot analysis of extracts of various cell lines, using N antibody (ABIN6132968, ABIN6144376, ABIN6144377 and ABIN6223123) at 1:1000 dilution. Secondary antibody: HRP Goat Anti-Rabbit IgG (H+L) (ABIN1684268 and ABIN3020597) at 1:10000 dilution. Lysates/proteins: 25 µg per lane. Blocking buffer: 3 % nonfat dry milk in TBST. Detection: ECL Enhanced Kit (RM00021). Exposure time: 90s.