



[Go to Product page](#)

Datasheet for ABIN6144401  
**anti-NCBP2 antibody (AA 1-156)**

4 Images

Overview

Quantity:	100 µL
Target:	NCBP2
Binding Specificity:	AA 1-156
Reactivity:	Human
Host:	Rabbit
Clonality:	Polyclonal
Conjugate:	This NCBP2 antibody is un-conjugated
Application:	Western Blotting (WB), Immunofluorescence (IF)

Product Details

Immunogen:	Recombinant fusion protein containing a sequence corresponding to amino acids 1-156 of human NCBP2 (NP_031388.2).
Sequence:	MSGGLLKALR SDSYVELSQY RDQHFRGDNE EQEKLLKKSC TLYVGNLSFY TTEEQIYELF SKSGDIKKII MGLDKMKKTA CGFCFVEYY S RADAENAMRY INGTRLDDRI IRTDWDAGFK EGRQYGRGRS GGQVRDEYRQ DYDAGRGGYG KLAQNNQ
Isotype:	IgG
Cross-Reactivity:	Human, Mouse
Characteristics:	Polyclonal Antibodies

Target Details

Target:	NCBP2
---------	-------

## Target Details

---

Alternative Name:	NCBP2 ( <a href="#">NCBP2 Products</a> )
Background:	The product of this gene is a component of the nuclear cap-binding protein complex (CBC), which binds to the monomethylated 5' cap of nascent pre-mRNA in the nucleoplasm. The encoded protein has an RNP domain commonly found in RNA binding proteins, and contains the cap-binding activity. The CBC promotes pre-mRNA splicing, 3'-end processing, RNA nuclear export, and nonsense-mediated mRNA decay. Multiple transcript variants encoding different isoforms have been found for this gene.,NCBP2,CBC2,CBP20,NIP1,PIG55,Epigenetics & Nuclear Signaling,RNA Binding,NCBP2
Molecular Weight:	11 kDa/15 kDa/18 kDa
Gene ID:	22916
UniProt:	<a href="#">P52298</a>
Pathways:	<a href="#">Ribonucleoprotein Complex Subunit Organization</a> , <a href="#">Methionine Biosynthetic Process</a>

## Application Details

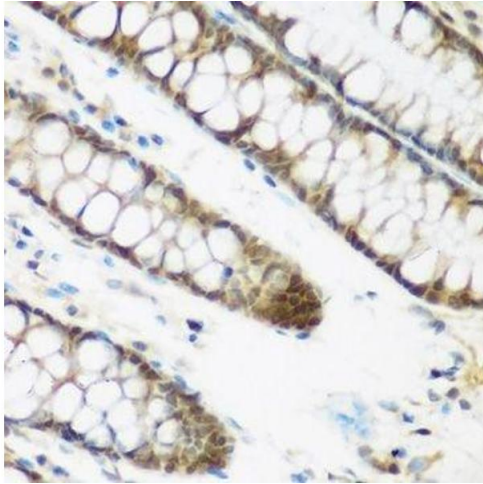
---

Application Notes:	WB,1:500 - 1:2000,IF,1:50 - 1:100
Comment:	HIGH QUALITY
Restrictions:	For Research Use only

## Handling

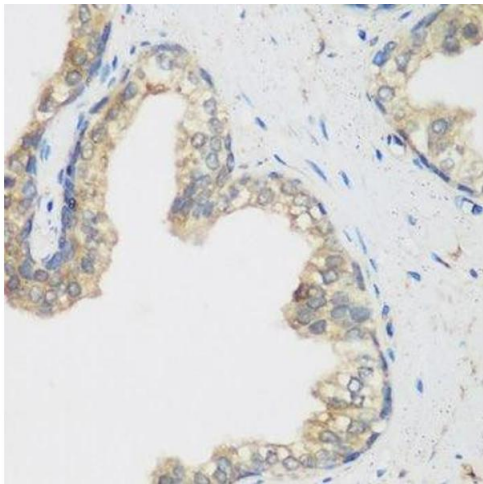
---

Format:	Liquid
Buffer:	PBS with 0.02 % sodium azide,50 % glycerol, pH 7.3.
Preservative:	Sodium azide
Precaution of Use:	This product contains Sodium azide: a POISONOUS AND HAZARDOUS SUBSTANCE which should be handled by trained staff only.
Storage:	-20 °C
Storage Comment:	Store at -20°C. Avoid freeze / thaw cycles.



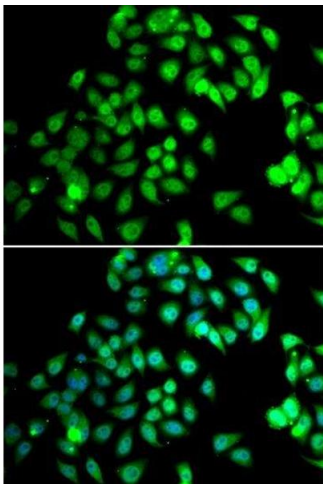
#### Immunohistochemistry (Paraffin-embedded Sections)

**Image 1.** Immunohistochemistry of paraffin-embedded human colon using NCBP2 antibody.



#### Immunohistochemistry (Paraffin-embedded Sections)

**Image 2.** Immunohistochemistry of paraffin-embedded human prostate using NCBP2 antibody.



#### Immunofluorescence

**Image 3.** Immunofluorescence analysis of MCF-7 cells using NCBP2 antibody.

Please check the [product details page](#) for more images. Overall 4 images are available for ABIN6144401.