

Datasheet for ABIN6144411  
**anti-Nucleolin antibody (AA 461-710)**



[Go to Product page](#)

2 Images

### Overview

Quantity:	100 µL
Target:	Nucleolin (NCL)
Binding Specificity:	AA 461-710
Reactivity:	Human
Host:	Rabbit
Clonality:	Polyclonal
Conjugate:	This Nucleolin antibody is un-conjugated
Application:	Western Blotting (WB), Immunohistochemistry (IHC)

### Product Details

Immunogen:	Recombinant fusion protein containing a sequence corresponding to amino acids 461-710 of human NCL (NP_005372.2).
Sequence:	LYYTGEKGQN QDYRGGKNST WSGESKTLVL SNLSYSATEE TLQEVFEKAT FIKVPQNG KSKGYAFIEF ASFEDAKEAL NSCNKREIEG RAIRLELQGP RGSPNARSQP SKTLFVKGLS EDTTEETLKE SFDGSRARI VTDRETGSSK GFGFVDFNSE EDAKAAKEAM EDGEIDGNKV TLDWAKPKGE GFGGRRGGGR GFGGRRGGGR GGRGGFGGRG RGGFGRGGF RGGRRGGGDH KPQGKKTKE
Isotype:	IgG
Cross-Reactivity:	Human, Mouse
Characteristics:	Polyclonal Antibodies

## Target Details

---

Target:	Nucleolin (NCL)
Alternative Name:	NCL ( <a href="#">NCL Products</a> )
Background:	Nucleolin (NCL), a eukaryotic nucleolar phosphoprotein, is involved in the synthesis and maturation of ribosomes. It is located mainly in dense fibrillar regions of the nucleolus. Human NCL gene consists of 14 exons with 13 introns and spans approximately 11kb. The intron 11 of the NCL gene encodes a small nucleolar RNA, termed U20.,NCL,C23,Nsr1,nucleolin,Epigenetics & Nuclear Signaling,RNA Binding,Cardiovascular,Angiogenesis,NCL
Molecular Weight:	76 kDa
Gene ID:	4691
UniProt:	<a href="#">P19338</a>
Pathways:	<a href="#">Ribonucleoprotein Complex Subunit Organization</a>

## Application Details

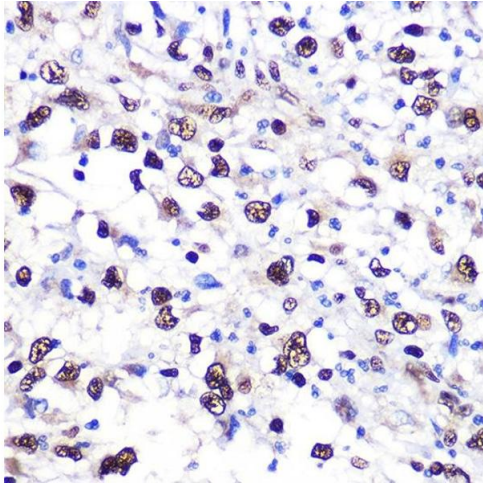
---

Application Notes:	WB,1:500 - 1:2000,IHC,1:50 - 1:200
Comment:	HIGH QUALITY
Restrictions:	For Research Use only

## Handling

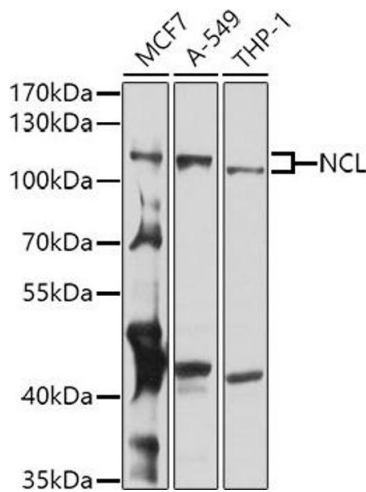
---

Format:	Liquid
Buffer:	PBS with 0.02 % sodium azide,50 % glycerol, pH 7.3.
Preservative:	Sodium azide
Precaution of Use:	This product contains Sodium azide: a POISONOUS AND HAZARDOUS SUBSTANCE which should be handled by trained staff only.
Storage:	-20 °C
Storage Comment:	Store at -20°C. Avoid freeze / thaw cycles.



### Immunohistochemistry

**Image 1.** Immunohistochemistry of paraffin-embedded human liver cancer using NCL Rabbit pAb (ABIN6128392, ABIN6144411, ABIN6144412 and ABIN6221613) at dilution of 1:100 (40x lens). Perform microwave antigen retrieval with 10 mM PBS buffer pH 7.2 before commencing with IHC staining protocol.



### Western Blotting

**Image 2.** Western blot analysis of extracts of various cell lines, using NCL antibody (ABIN6128392, ABIN6144411, ABIN6144412 and ABIN6221613) at 1:1000 dilution. Secondary antibody: HRP Goat Anti-Rabbit IgG (H+L) (ABIN1684268 and ABIN3020597) at 1:10000 dilution. Lysates/proteins: 25 µg per lane. Blocking buffer: 3 % nonfat dry milk in TBST. Detection: ECL Basic Kit (RM00020). Exposure time: 30s.