



Datasheet for ABIN6144427
anti-NCR3 antibody (AA 20-140)



[Go to Product page](#)

1 Image

Overview

Quantity:	100 µL
Target:	NCR3
Binding Specificity:	AA 20-140
Reactivity:	Human
Host:	Rabbit
Clonality:	Polyclonal
Conjugate:	This NCR3 antibody is un-conjugated
Application:	Western Blotting (WB)

Product Details

Immunogen:	Recombinant fusion protein containing a sequence corresponding to amino acids 20-140 of human NCR3 (NP_667341.1).
Sequence:	WVSQPPEIRT LEGSSAFLPC SFNASQGRLA IGSVTWFRDE VVPGKEVRNG TPEFRGRLAP LASSRFLHDH QAELHIRDVR GHDASIYVCR VEVLGLGVGT GNGTRLVVEK EHPQLGAGTV L
Isotype:	IgG
Cross-Reactivity:	Rat
Characteristics:	Polyclonal Antibodies

Target Details

Target:	NCR3
---------	------

Target Details

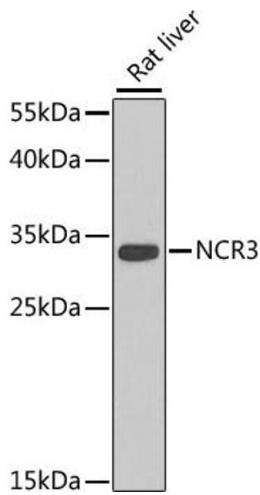
Alternative Name:	NCR3 (NCR3 Products)
Background:	The protein encoded by this gene is a natural cytotoxicity receptor (NCR) that may aid NK cells in the lysis of tumor cells. The encoded protein interacts with CD3-zeta (CD247), a T-cell receptor. A single nucleotide polymorphism in the 5' untranslated region of this gene has been associated with mild malaria susceptibility. Three transcript variants encoding different isoforms have been found for this gene.,NCR3,1C7,CD337,LY117,MALS,NKp30,Immunology & Inflammation,CD markers,Stem Cells,Hematopoietic Progenitors,NCR3
Molecular Weight:	16 kDa/17 kDa/18 kDa/19 kDa/20 kDa/21 kDa
Gene ID:	259197
UniProt:	O14931
Pathways:	Regulation of Leukocyte Mediated Immunity , Positive Regulation of Immune Effector Process

Application Details

Application Notes:	WB,1:500 - 1:2000
Restrictions:	For Research Use only

Handling

Format:	Liquid
Buffer:	PBS with 0.02 % sodium azide,50 % glycerol, pH 7.3.
Preservative:	Sodium azide
Precaution of Use:	This product contains Sodium azide: a POISONOUS AND HAZARDOUS SUBSTANCE which should be handled by trained staff only.
Storage:	-20 °C
Storage Comment:	Store at -20°C. Avoid freeze / thaw cycles.



Western Blotting

Image 1. Western blot analysis of extracts of rat liver, using NCR3 antibody (ABIN6129550, ABIN6144427, ABIN6144429 and ABIN6222973) at 1:1000 dilution. Secondary antibody: HRP Goat Anti-Rabbit IgG (H+L) (ABIN1684268 and ABIN3020597) at 1:10000 dilution. Lysates/proteins: 25 µg per lane. Blocking buffer: 3 % nonfat dry milk in TBST. Detection: ECL Basic Kit (RM00020). Exposure time: 60s.