

Datasheet for ABIN6144430
anti-NCS1 antibody (AA 1-190)



[Go to Product page](#)

2 Images

Overview

Quantity:	100 µL
Target:	NCS1
Binding Specificity:	AA 1-190
Reactivity:	Human
Host:	Rabbit
Clonality:	Polyclonal
Conjugate:	This NCS1 antibody is un-conjugated
Application:	Western Blotting (WB), Immunohistochemistry (IHC), Immunofluorescence (IF)

Product Details

Immunogen:	Recombinant fusion protein containing a sequence corresponding to amino acids 1-190 of human NCS1 (NP_055101.2).
Sequence:	MGKSNSKLKP EVVEELTRKT YFTEKEVQQW YKGFIKDCPS QLDAAGFQK IYKQFFPFGD PTKFATFVFN VFDENKDGRI EFSEFIQALS VTSRGTLDK LRWAFKLYDL DNDGYITRNE MLDIVDAIQ MVGNTVELPE EENTPEKRVD RIFAMMDKNA DGKLTQEFQ EGSKADPSIV QALSLYDGLV
Isotype:	IgG
Cross-Reactivity:	Human, Mouse, Rat
Characteristics:	Polyclonal Antibodies

Target Details

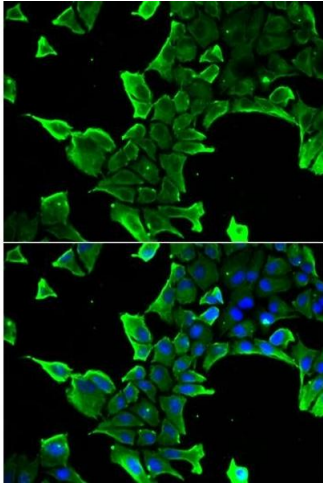
Target:	NCS1
Alternative Name:	NCS1 (NCS1 Products)
Background:	This gene is a member of the neuronal calcium sensor gene family, which encode calcium-binding proteins expressed predominantly in neurons. The protein encoded by this gene regulates G protein-coupled receptor phosphorylation in a calcium-dependent manner and can substitute for calmodulin. The protein is associated with secretory granules and modulates synaptic transmission and synaptic plasticity. Multiple transcript variants encoding different isoforms have been found for this gene.,NCS1,FLUP,FREQ,Neuroscience,Calcium Signaling,NCS1
Molecular Weight:	19 kDa/21 kDa
Gene ID:	23413
UniProt:	P62166

Application Details

Application Notes:	WB,1:500 - 1:2000,IHC,1:50 - 1:200,IF,1:50 - 1:200
Restrictions:	For Research Use only

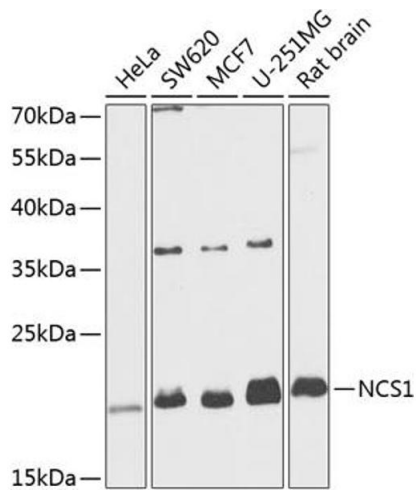
Handling

Format:	Liquid
Buffer:	PBS with 0.02 % sodium azide,50 % glycerol, pH 7.3.
Preservative:	Sodium azide
Precaution of Use:	This product contains Sodium azide: a POISONOUS AND HAZARDOUS SUBSTANCE which should be handled by trained staff only.
Storage:	-20 °C
Storage Comment:	Store at -20°C. Avoid freeze / thaw cycles.



Immunofluorescence

Image 1. Immunofluorescence analysis of cells using NCS1 antibody . Blue: DAPI for nuclear staining.



Western Blotting

Image 2. Western blot analysis of extracts of various cell lines, using NCS1 antibody at 1:1000 dilution. Secondary antibody: HRP Goat Anti-Rabbit IgG (H+L) (ABIN1684268 and ABIN3020597) at 1:10000 dilution. Lysates/proteins: 25 µg per lane. Blocking buffer: 3% nonfat dry milk in TBST. Detection: ECL Basic Kit (RM00020). Exposure time: 90s.