



[Go to Product page](#)

Datasheet for ABIN6144434  
**anti-MT-ND5 antibody (AA 300-400)**

1 Image

Overview

Quantity:	100 µL
Target:	MT-ND5
Binding Specificity:	AA 300-400
Reactivity:	Mouse
Host:	Rabbit
Clonality:	Polyclonal
Conjugate:	This MT-ND5 antibody is un-conjugated
Application:	Western Blotting (WB)

Product Details

Immunogen:	A synthetic peptide corresponding to a sequence within amino acids 300-400 of mouse MT-ND5 (NP_904338.1).
Sequence:	KIIAFSTSSQ LGLMMVTLGM NQPHLAFLHI CTHAFFKAML FMCSGSIHS LADEQDIRKM GNITKIMPFT SSCLVIGSLA LTGMPFLTGF YSKDLIEAI N
Isotype:	IgG
Cross-Reactivity:	Human, Mouse, Rat
Characteristics:	Polyclonal Antibodies
Purification:	Affinity purification

## Target Details

---

Target:	MT-ND5
Alternative Name:	MT-ND5 ( <a href="#">MT-ND5 Products</a> )
Background:	Core subunit of the mitochondrial membrane respiratory chain NADH dehydrogenase (Complex I which catalyzes electron transfer from NADH through the respiratory chain, using ubiquinone as an electron acceptor. Essential for the catalytic activity and assembly of complex I.,MT-ND5,MTND5,ND5,Cancer,Signal Transduction,Endocrine & Metabolism,Mitochondrial metabolism,Mitochondrial markers,Neuroscience,Neurodegenerative Diseases,MT-ND5
Molecular Weight:	68 kDa
Gene ID:	17721
UniProt:	<a href="#">P03915</a>

## Application Details

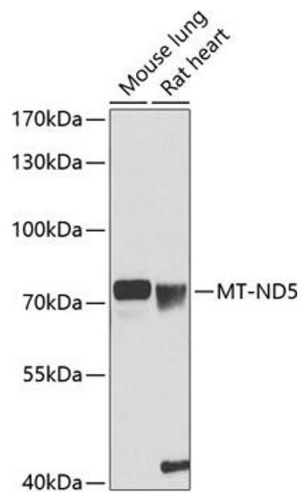
---

Application Notes:	WB,1:500 - 1:2000
Restrictions:	For Research Use only

## Handling

---

Format:	Liquid
Buffer:	PBS with 0.02 % sodium azide,50 % glycerol, pH 7.3.
Preservative:	Sodium azide
Precaution of Use:	This product contains Sodium azide: a POISONOUS AND HAZARDOUS SUBSTANCE which should be handled by trained staff only.
Storage:	-20 °C
Storage Comment:	Store at -20°C. Avoid freeze / thaw cycles.



### Western Blotting

**Image 1.** Western blot analysis of extracts of various cell lines, using MT-ND5 antibody (ABIN6135115, ABIN6144434, ABIN6144436 and ABIN6216103) at 1:1000 dilution. Secondary antibody: HRP Goat Anti-Rabbit IgG (H+L) (ABIN1684268 and ABIN3020597) at 1:10000 dilution. Lysates/proteins: 25 µg per lane. Blocking buffer: 3 % nonfat dry milk in TBST. Detection: ECL Basic Kit (RM00020). Exposure time: 90s.