

Datasheet for ABIN6144443
anti-NDE1 antibody (AA 1-110)



[Go to Product page](#)

4 Images

Overview

Quantity:	100 µL
Target:	NDE1
Binding Specificity:	AA 1-110
Reactivity:	Human
Host:	Rabbit
Clonality:	Polyclonal
Conjugate:	This NDE1 antibody is un-conjugated
Application:	Western Blotting (WB), Immunohistochemistry (IHC)

Product Details

Immunogen:	Recombinant fusion protein containing a sequence corresponding to amino acids 1-110 of human NDE1 (NP_060138.1).
Sequence:	MEDSGKTFSS EEEEANYWKD LAMTYKQRAE NTQEELREFQ EGSREYEAEL ETQLQQIETR NRDLLSENNR LRMELETIKE KFEVQHSEGY RQISALEDDL AQTKAIKDQL
Isotype:	IgG
Cross-Reactivity:	Human, Mouse, Rat
Characteristics:	Polyclonal Antibodies

Target Details

Target:	NDE1
---------	------

Target Details

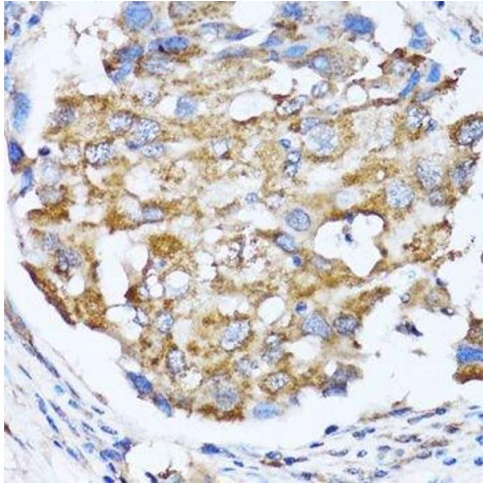
Alternative Name:	NDE1 (NDE1 Products)
Background:	This gene encodes a member of the nuclear distribution E (NudE) family of proteins. The encoded protein is localized at the centrosome and interacts with other centrosome components as part of a multiprotein complex that regulates dynein function. This protein plays an essential role in microtubule organization, mitosis and neuronal migration. Mutations in this gene cause lissencephaly 4, a disorder characterized by lissencephaly, severe brain atrophy, microcephaly, and severe mental retardation. Alternative splicing results in multiple transcript variants.,NDE1,HOM-TES-87,LIS4,MHAC,NDE,NUDE,NUDE1,Epigenetics & Nuclear Signaling,Cell Biology & Developmental Biology,Cell Cycle,Centrosome,Neuroscience,NDE1
Molecular Weight:	37 kDa/38 kDa
Gene ID:	54820
UniProt:	Q9NXR1

Application Details

Application Notes:	WB,1:500 - 1:2000,IHC,1:50 - 1:200
Comment:	HIGH QUALITY
Restrictions:	For Research Use only

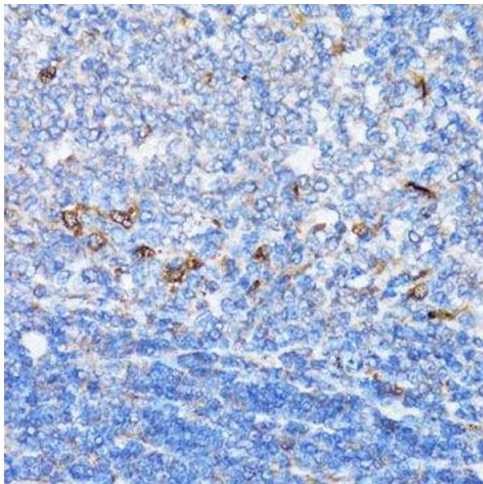
Handling

Format:	Liquid
Buffer:	PBS with 0.02 % sodium azide,50 % glycerol, pH 7.3.
Preservative:	Sodium azide
Precaution of Use:	This product contains Sodium azide: a POISONOUS AND HAZARDOUS SUBSTANCE which should be handled by trained staff only.
Storage:	-20 °C
Storage Comment:	Store at -20°C. Avoid freeze / thaw cycles.



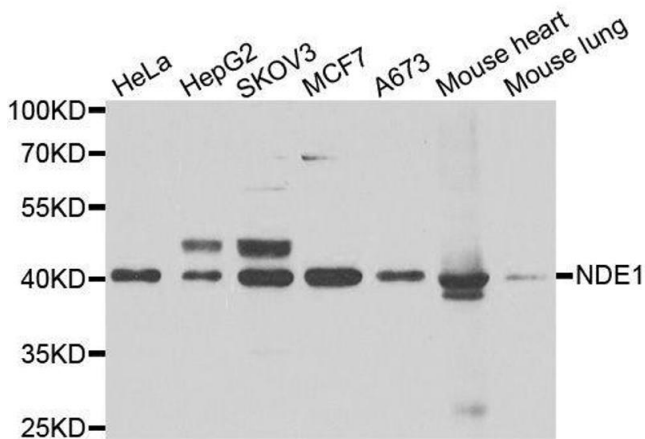
Immunohistochemistry (Paraffin-embedded Sections)

Image 1. Immunohistochemistry of paraffin-embedded human breast cancer using NDE1 antibody.



Immunohistochemistry (Paraffin-embedded Sections)

Image 2. Immunohistochemistry of paraffin-embedded rat spleen using NDE1 antibody.



Western Blotting

Image 3. Western blot analysis of extracts of various cell lines, using NDE1 antibody.

Please check the [product details page](#) for more images. Overall 4 images are available for ABIN6144443.