

Datasheet for ABIN6144502
anti-NDUFV2 antibody (AA 1-249)



[Go to Product page](#)

2 Images

Overview

| | |
|----------------------|---------------------------------------|
| Quantity: | 100 µL |
| Target: | NDUFV2 |
| Binding Specificity: | AA 1-249 |
| Reactivity: | Human |
| Host: | Rabbit |
| Clonality: | Polyclonal |
| Conjugate: | This NDUFV2 antibody is un-conjugated |
| Application: | Western Blotting (WB) |

Product Details

| | |
|-------------------|--|
| Immunogen: | Recombinant fusion protein containing a sequence corresponding to amino acids 1-249 of human NDUFV2 (NP_066552.2). |
| Sequence: | MFFSALRAR AAGLTAHWGR HVRNLHKTVM QNGAGGALFV HRDTPENNPDP TPFDFTPENY KRIEAIKKNY PEGHKAAAVL PVLDLAQRQN GWLPISAMNK VAEVLQVPPM RVEVATFYT MYNRKPVGKY HIQVCTTTPC MLRNSDSILE AIQKKGKIKV GETTPDKLFT LIEVECLGAC VNAPMVQIND NYIEDLTAKD IEEIIDELKA GKIPKPGPRS GRFSCEPAGG LTSLTEPPKG PGFGVQAGL |
| Isotype: | IgG |
| Cross-Reactivity: | Human, Mouse, Rat |
| Characteristics: | Polyclonal Antibodies |

Target Details

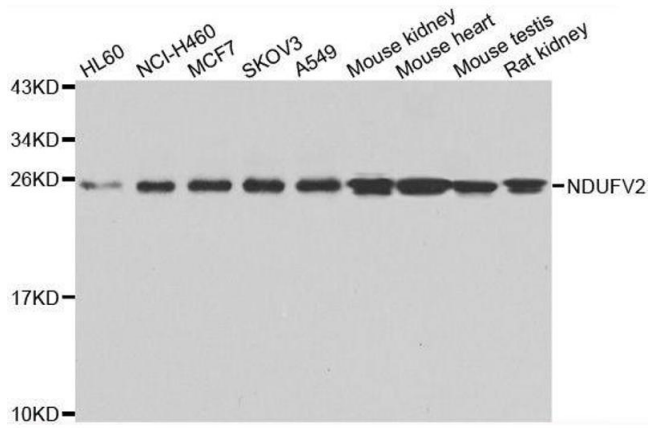
| | |
|-------------------|--|
| Target: | NDUFV2 |
| Alternative Name: | NDUFV2 (NDUFV2 Products) |
| Background: | <p>The NADH-ubiquinone oxidoreductase complex (complex I) of the mitochondrial respiratory chain catalyzes the transfer of electrons from NADH to ubiquinone, and consists of at least 43 subunits. The complex is located in the inner mitochondrial membrane. This gene encodes the 24 kDa subunit of complex I, and is involved in electron transfer. Mutations in this gene are implicated in Parkinson's disease, bipolar disorder, schizophrenia, and have been found in one case of early onset hypertrophic cardiomyopathy and encephalopathy. A non-transcribed pseudogene of this locus is found on chromosome 19.,NDUFV2,CI-24k,Cancer,Signal Transduction,Endocrine & Metabolism,Mitochondrial metabolism,Mitochondrial markers,Oxidative phosphorylation,Neuroscience,Neurodegenerative Diseases,NDUFV2</p> |
| Molecular Weight: | 27 kDa |
| Gene ID: | 4729 |
| UniProt: | P19404 |

Application Details

| | |
|--------------------|-----------------------|
| Application Notes: | WB,1:500 - 1:2000 |
| Comment: | HIGH QUALITY |
| Restrictions: | For Research Use only |

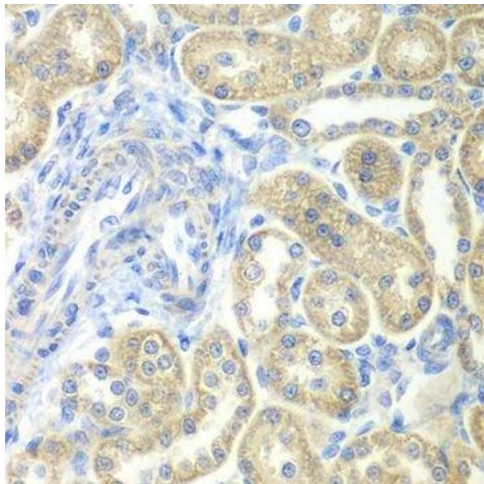
Handling

| | |
|--------------------|--|
| Format: | Liquid |
| Buffer: | PBS with 0.02 % sodium azide,50 % glycerol, pH 7.3. |
| Preservative: | Sodium azide |
| Precaution of Use: | This product contains Sodium azide: a POISONOUS AND HAZARDOUS SUBSTANCE which should be handled by trained staff only. |
| Storage: | -20 °C |
| Storage Comment: | Store at -20°C. Avoid freeze / thaw cycles. |



Western Blotting

Image 1. Western blot analysis of extracts of various cell lines, using NDUFV2 antibody.



Immunohistochemistry (Paraffin-embedded Sections)

Image 2. Immunohistochemistry of paraffin-embedded rat kidney using NDUFV2 antibody.