



[Go to Product page](#)

Datasheet for ABIN6144512  
**anti-NEFH antibody (AA 821-1020)**

4 Images

Overview

Quantity:	100 µL
Target:	NEFH
Binding Specificity:	AA 821-1020
Reactivity:	Human
Host:	Rabbit
Clonality:	Polyclonal
Conjugate:	This NEFH antibody is un-conjugated
Application:	Western Blotting (WB), Immunofluorescence (IF), Immunoprecipitation (IP)

Product Details

Immunogen:	Recombinant fusion protein containing a sequence corresponding to amino acids 821-1020 of human Neurofilament H (NP_066554.2).
Sequence:	KSPVKEEEKP QEVKVKKEPPK KAEEEEKAPAT PKTEEEKDSK KEEAPKKEAP KPKVEEKKEP AVEKPKESKV EAKKEEAEDK KKVPTPEKEA PAKVEVKEDA KPKEKTEVAK KEPDDAKAKE PSKPAEKKEA APEKKDTKEE KAKKPEEKPK TEAKAKEDDK TLSKEPSKPK AEKAEKSSST DQKDSKPPEK ATEDKAAK GK
Isotype:	IgG
Cross-Reactivity:	Human, Mouse, Rat
Characteristics:	Polyclonal Antibodies

## Target Details

---

Target:	NEFH
Alternative Name:	NEFH ( <a href="#">NEFH Products</a> )
Background:	Neurofilaments are type IV intermediate filament heteropolymers composed of light, medium, and heavy chains. Neurofilaments comprise the axoskeleton and functionally maintain neuronal caliber. They may also play a role in intracellular transport to axons and dendrites. This gene encodes the heavy neurofilament protein. This protein is commonly used as a biomarker of neuronal damage and susceptibility to amyotrophic lateral sclerosis (ALS) has been associated with mutations in this gene.,CMT2CC,NFH,NEFH,Signal Transduction,Cell Biology & Developmental Biology,Cell Adhesion,Cytoskeleton,Intermediate Filaments,Neuroscience,Cell Type Marker,Neurodegenerative Diseases,Amyloid Plaque and Neurofibrillary Tangle Formation in Alzheimer's Disease,Neuron marker,Axon marker,NEFH
Molecular Weight:	105 kDa/112 kDa
Gene ID:	4744
UniProt:	<a href="#">P12036</a>

## Application Details

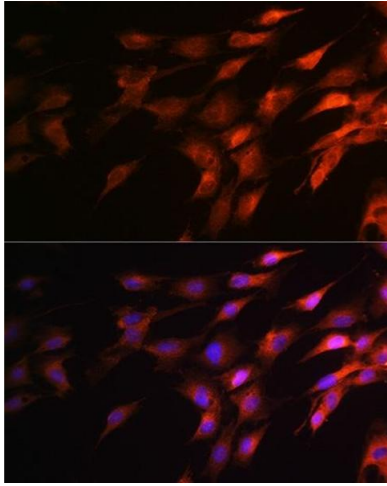
---

Application Notes:	WB,1:500 - 1:2000,IF,1:50 - 1:100,IP,1:50 - 1:200
Comment:	HIGH QUALITY
Restrictions:	For Research Use only

## Handling

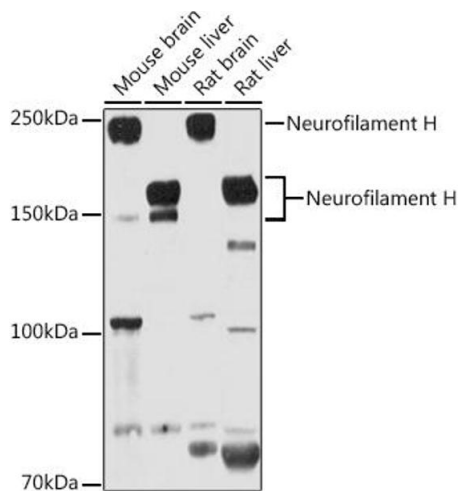
---

Format:	Liquid
Buffer:	PBS with 0.02 % sodium azide,50 % glycerol, pH 7.3.
Preservative:	Sodium azide
Precaution of Use:	This product contains Sodium azide: a POISONOUS AND HAZARDOUS SUBSTANCE which should be handled by trained staff only.
Storage:	-20 °C
Storage Comment:	Store at -20°C. Avoid freeze / thaw cycles.



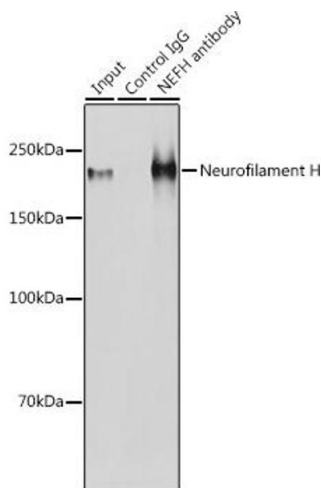
### Immunofluorescence

**Image 1.** Immunofluorescence analysis of C6 cells using Neurofilament H Rabbit pAb (ABIN6129638, ABIN6144512, ABIN6144513 and ABIN6224502) at dilution of 1:100 (40x lens). Blue: DAPI for nuclear staining.



### Western Blotting

**Image 2.** Western blot analysis of extracts of various cell lines, using Neurofilament H antibody (ABIN6129638, ABIN6144512, ABIN6144513 and ABIN6224502) at 1:1000 dilution. Secondary antibody: HRP Goat Anti-Rabbit IgG (H+L) (ABIN1684268 and ABIN3020597) at 1:10000 dilution. Lysates/proteins: 25 µg per lane. Blocking buffer: 3 % nonfat dry milk in TBST. Detection: ECL Basic Kit (RM00020). Exposure time: 30s.



### Immunoprecipitation

**Image 3.** Immunoprecipitation analysis of 600 µg extracts of Mouse brain cells using 3 µg Neurofilament H antibody (ABIN6129638, ABIN6144512, ABIN6144513 and ABIN6224502). Western blot was performed from the immunoprecipitate using Neurofilament H antibody (ABIN6129638, ABIN6144512, ABIN6144513 and ABIN6224502) at a dilution of 1:1000.

Please check the [product details page](#) for more images. Overall 4 images are available for ABIN6144512.