

Datasheet for ABIN6144516
anti-NEK2 antibody (C-Term)



[Go to Product page](#)

2 Images

Overview

Quantity:	100 µL
Target:	NEK2
Binding Specificity:	C-Term
Reactivity:	Human
Host:	Rabbit
Clonality:	Polyclonal
Conjugate:	This NEK2 antibody is un-conjugated
Application:	Western Blotting (WB), Immunohistochemistry (IHC)

Product Details

Immunogen:	A synthetic peptide corresponding to a sequence within amino acids 300 to the C-terminus of human NEK2 (NP_002488.1).
Sequence:	SPVLSSELKLIK EIQLQERERA LKAREERLEQ KEQELCVRER LAEDKLARAE NLLKNYSLLK ERKFLSLASN PELLNLPSSV IKKKVHFSGE SKENIMRSEN SESQLTSKSK CKDLKKRLHA AQLRAQALSD IEKNYQLKSR QILGMR
Isotype:	IgG
Cross-Reactivity:	Human, Rat
Characteristics:	Polyclonal Antibodies

Target Details

Target:	NEK2
---------	------

Target Details

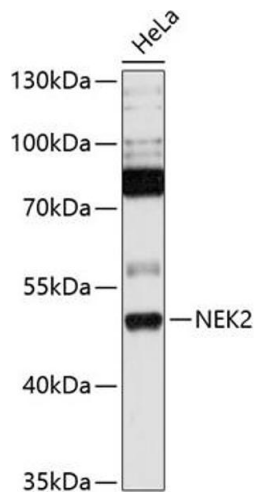
Alternative Name:	NEK2 (NEK2 Products)
Background:	This gene encodes a serine/threonine-protein kinase that is involved in mitotic regulation. This protein is localized to the centrosome, and undetectable during G1 phase, but accumulates progressively throughout the S phase, reaching maximal levels in late G2 phase. Alternatively spliced transcript variants encoding different isoforms with distinct C-termini have been noted for this gene.,NEK2,HsPK21,NEK2A,NLK1,PPP1R111,RP67,Cancer,Signal Transduction,Kinase,Cell Biology & Developmental Biology,Cell Cycle,Centrosome,NEK2
Molecular Weight:	37 kDa/44 kDa/50 kDa/51 kDa
Gene ID:	4751
UniProt:	P51955
Pathways:	M Phase

Application Details

Application Notes:	WB,1:500 - 1:2000,IHC,1:50 - 1:200
Restrictions:	For Research Use only

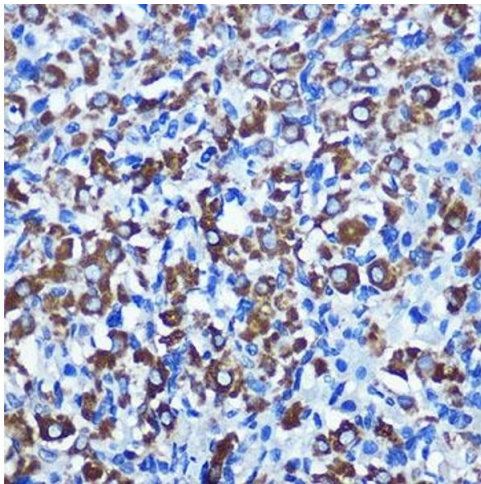
Handling

Format:	Liquid
Buffer:	PBS with 0.02 % sodium azide,50 % glycerol, pH 7.3.
Preservative:	Sodium azide
Precaution of Use:	This product contains Sodium azide: a POISONOUS AND HAZARDOUS SUBSTANCE which should be handled by trained staff only.
Storage:	-20 °C
Storage Comment:	Store at -20°C. Avoid freeze / thaw cycles.



Western Blotting

Image 1. Western blot analysis of extracts of HeLa cells, using NEK2 antibody at 1:1000 dilution. Secondary antibody: HRP Goat Anti-Rabbit IgG (H+L) (ABIN1684268 and ABIN3020597) at 1:10000 dilution. Lysates/proteins: 25 µg per lane. Blocking buffer: 3% nonfat dry milk in TBST. Detection: ECL Basic Kit (RM00020). Exposure time: 10s.



Immunohistochemistry

Image 2. Immunohistochemistry of paraffin-embedded rat ovary using NEK2 Rabbit pAb at dilution of 1:100 (40x lens). Perform microwave antigen retrieval with 10 mM PBS buffer pH 7.2 before commencing with IHC staining protocol.