

Datasheet for ABIN6144654  
**anti-NLN antibody (AA 38-260)**



[Go to Product page](#)

1 Image

## Overview

Quantity:	100 µL
Target:	NLN
Binding Specificity:	AA 38-260
Reactivity:	Human
Host:	Rabbit
Clonality:	Polyclonal
Conjugate:	This NLN antibody is un-conjugated
Application:	Western Blotting (WB)

## Product Details

Immunogen:	Recombinant fusion protein containing a sequence corresponding to amino acids 38-260 of human NLN (NP_065777.1).
Sequence:	SSYTVAGRNV LRWDLSPEDI KTRTEELIVQ TKQVYDAVGM LGIEEVTYEN CLQALADVEV KYIVERTMLD FPQHVSDDKE VRAASTEADK RLSRFDIEMS MRGDIFERIV HLQETCDLGK IKPEARRYLE KSIKMGKRNG LHLPEQVQNE IKSMKKRMSE LCIDFNKNLN EDDTFLVFSK AELGALPDDF IDSLEKTDDD KYKITLKYPH YFPVMKKCCI PET
Isotype:	IgG
Cross-Reactivity:	Human, Rat
Characteristics:	Polyclonal Antibodies

## Target Details

---

Target:	NLN
Alternative Name:	NLN ( <a href="#">NLN Products</a> )
Background:	This gene encodes a member of the metallopeptidase M3 protein family that cleaves neurotensin at the Pro10-Tyr11 bond, leading to the formation of neurotensin(1-10) and neurotensin(11-13). The encoded protein is likely involved in the termination of the neurotensinergic signal in the central nervous system and in the gastrointestinal tract.,NLN,AGTBP,EP24.16,MEP,MOP,Cell Biology & Developmental Biology,Ubiquitin,Endocrine & Metabolism,Mitochondrial metabolism,Mitochondrial markers,NLN
Molecular Weight:	80 kDa
Gene ID:	57486
UniProt:	<a href="#">Q9BYT8</a>

## Application Details

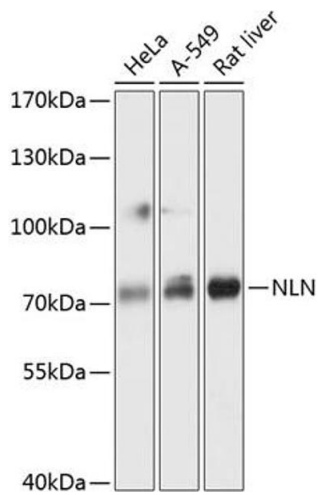
---

Application Notes:	WB,1:500 - 1:2000
Restrictions:	For Research Use only

## Handling

---

Format:	Liquid
Buffer:	PBS with 0.02 % sodium azide,50 % glycerol, pH 7.3.
Preservative:	Sodium azide
Precaution of Use:	This product contains Sodium azide: a POISONOUS AND HAZARDOUS SUBSTANCE which should be handled by trained staff only.
Storage:	-20 °C
Storage Comment:	Store at -20°C. Avoid freeze / thaw cycles.



### Western Blotting

**Image 1.** Western blot analysis of extracts of various cell lines, using NLN antibody at 1:3000 dilution. Secondary antibody: HRP Goat Anti-Rabbit IgG (H+L) (ABIN1684268 and ABIN3020597) at 1:10000 dilution. Lysates/proteins: 25 µg per lane. Blocking buffer: 3% nonfat dry milk in TBST. Detection: ECL Basic Kit (RM00020). Exposure time: 30s.