

Datasheet for ABIN6144671  
**anti-NLRX1 antibody (AA 87-360)**



[Go to Product page](#)

2 Images

## Overview

Quantity:	100 µL
Target:	NLRX1
Binding Specificity:	AA 87-360
Reactivity:	Human
Host:	Rabbit
Clonality:	Polyclonal
Conjugate:	This NLRX1 antibody is un-conjugated
Application:	Western Blotting (WB), Immunoprecipitation (IP)

## Product Details

Immunogen:	Recombinant fusion protein containing a sequence corresponding to amino acids 87-360 of human NLRX1 (NP_001269073.1).
Sequence:	AEWFSRLPRE ERQFGPTFAL DTVHVDPVIR ESTPDELLRP PAELALEHQP PQAGLPPLAL SQLFNPDACG RRVQTVVLYG TVGTGKSTLV RKMVLWCYD RLPAPFELLIP FSCEDLSSLG PAPASLCQLV AQRYPPLKEV LPLMAAAGSH LLFVLHGLEH LNLDLFRLAGT GLCSDPEEPQ EPAAIIVNLL RKYMLPQASI LVTRPSAIG RIPSKYVGRY GEICGFSDTN LQKLYFQLRL NQPYCGYAVG GSGVSATPAQ RDHLVQMLSR NLEG
Isotype:	IgG
Cross-Reactivity:	Human, Mouse, Rat
Characteristics:	Polyclonal Antibodies

## Target Details

---

Target:	NLRX1
Alternative Name:	NLRX1 ( <a href="#">NLRX1 Products</a> )
Background:	The protein encoded by this gene is a member of the NLR family and localizes to the outer mitochondrial membrane. The encoded protein is a regulator of mitochondrial antiviral responses. Three transcript variants encoding the same protein have been found for this gene.,NLRX1,CLR11.3,DLNB26,NOD26,NOD5,NOD9,Immunology & Inflammation,Cell Intrinsic Innate Immunity Signaling Pathway,NLRX1
Molecular Weight:	101 kDa/107 kDa
Gene ID:	79671
UniProt:	<a href="#">Q86UT6</a>
Pathways:	<a href="#">SARS-CoV-2 Protein Interactome</a>

## Application Details

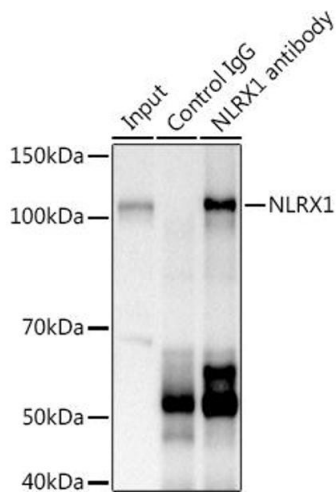
---

Application Notes:	WB,1:500 - 1:2000,IP,1:50 - 1:200
Restrictions:	For Research Use only

## Handling

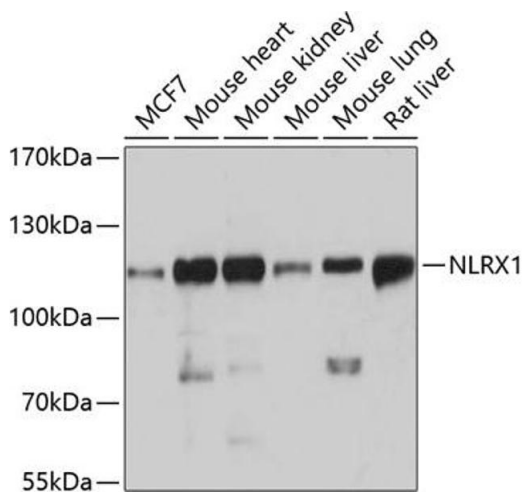
---

Format:	Liquid
Buffer:	PBS with 0.02 % sodium azide,50 % glycerol, pH 7.3.
Preservative:	Sodium azide
Precaution of Use:	This product contains Sodium azide: a POISONOUS AND HAZARDOUS SUBSTANCE which should be handled by trained staff only.
Storage:	-20 °C
Storage Comment:	Store at -20°C. Avoid freeze / thaw cycles.



### Immunoprecipitation

**Image 1.** Immunoprecipitation analysis of 600 µg extracts of Mouse kidney using 3 µg NLRX1 antibody . Western blot was performed from the immunoprecipitate using NLRX1 at a dilution of 1:1000.



### Western Blotting

**Image 2.** Western blot analysis of extracts of various cell lines, using NLRX1 antibody at 1:3000 dilution. Secondary antibody: HRP Goat Anti-Rabbit IgG (H+L) (ABIN1684268 and ABIN3020597) at 1:10000 dilution. Lysates/proteins: 25 µg per lane. Blocking buffer: 3% nonfat dry milk in TBST. Detection: ECL Basic Kit (RM00020). Exposure time: 10s.