

Datasheet for ABIN6144678
anti-NME2 antibody (AA 1-152)



[Go to Product page](#)

4 Images

Overview

Quantity:	100 µL
Target:	NME2
Binding Specificity:	AA 1-152
Reactivity:	Human
Host:	Rabbit
Clonality:	Polyclonal
Conjugate:	This NME2 antibody is un-conjugated
Application:	Western Blotting (WB), Immunohistochemistry (IHC)

Product Details

Immunogen:	Recombinant fusion protein containing a sequence corresponding to amino acids 1-152 of human NME2/NM23B (NP_001018148.1).
Sequence:	MANLERTFIA IKPDGVQRGL VGEIIKRFEQ KGFRLVAMKF LRASEEHLKQ HYIDLKDRPF FPGLVKYMNS GPVVAMVWEG LNVVKTGRVM LGETNPADSK PGTIRGDFCI QVGRNIIHGS DSVKSAEKEI SLWFKPEELV DYKSCAHDWV YE
Isotype:	IgG
Cross-Reactivity:	Human, Mouse, Rat
Characteristics:	Polyclonal Antibodies

Target Details

Target:	NME2
---------	------

Target Details

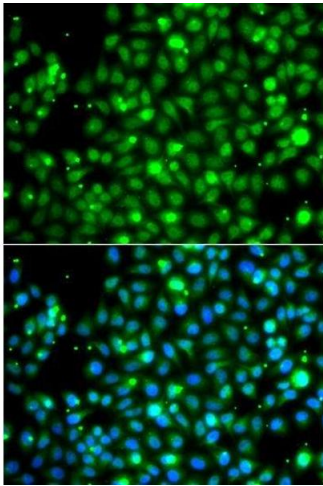
Alternative Name:	NME2 (NME2 Products)
Background:	Nucleoside diphosphate kinase (NDK) exists as a hexamer composed of 'A' (encoded by NME1) and 'B' (encoded by this gene) isoforms. Multiple alternatively spliced transcript variants have been found for this gene. Read-through transcription from the neighboring upstream gene (NME1) generates naturally-occurring transcripts (NME1-NME2) that encode a fusion protein comprised of sequence sharing identity with each individual gene product.,NME2,NDKB,NDPK-B,NDPKB,NM23-H2,NM23B,PUF,NME2
Molecular Weight:	17 kDa/30 kDa
Gene ID:	4831
UniProt:	P22392

Application Details

Application Notes:	WB,1:500 - 1:2000,IHC,1:50 - 1:200
Comment:	HIGH QUALITY
Restrictions:	For Research Use only

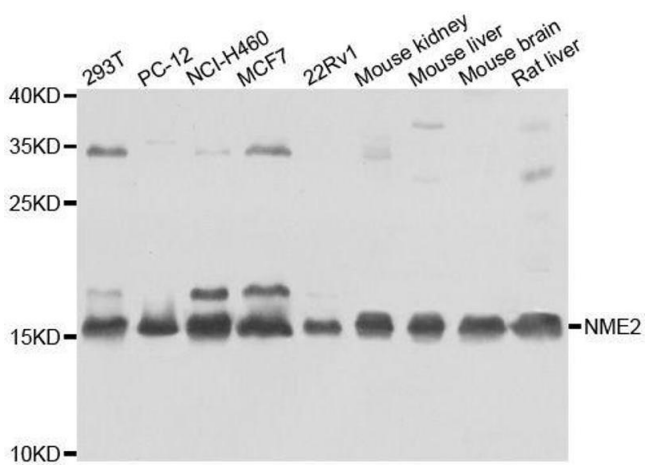
Handling

Format:	Liquid
Buffer:	PBS with 0.02 % sodium azide,50 % glycerol, pH 7.3.
Preservative:	Sodium azide
Precaution of Use:	This product contains Sodium azide: a POISONOUS AND HAZARDOUS SUBSTANCE which should be handled by trained staff only.
Storage:	-20 °C
Storage Comment:	Store at -20°C. Avoid freeze / thaw cycles.



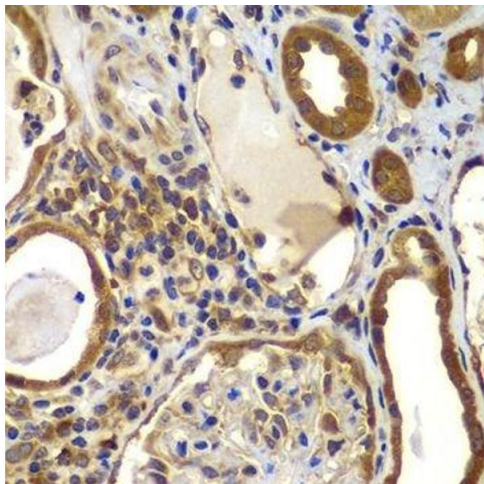
Immunofluorescence

Image 1. Immunofluorescence analysis of A549 cells using NME2 antibody.



Western Blotting

Image 2. Western blot analysis of extracts of various cell lines, using NME2 antibody.



Immunohistochemistry (Paraffin-embedded Sections)

Image 3. Immunohistochemistry of paraffin-embedded human kidney using NME2 antibody.

Please check the [product details page](#) for more images. Overall 4 images are available for ABIN6144678.