

Datasheet for ABIN614470
anti-IL1R1 antibody (Extracellular Domain)



[Go to Product page](#)

1 Image

Overview

Quantity:	50 µg
Target:	IL1R1
Binding Specificity:	Extracellular Domain
Reactivity:	Human
Host:	Mouse
Clonality:	Monoclonal
Conjugate:	This IL1R1 antibody is un-conjugated
Application:	Immunohistochemistry (Paraffin-embedded Sections) (IHC (p)), Radioimmunoassay (RIA), Immunofluorescence (IF), Enzyme Immunoassay (EIA)

Product Details

Immunogen:	Extracellular domain of the type I Human IL-1 receptor.
Clone:	40101
Isotype:	IgG2b
Specificity:	These antibodies react with cell surface and soluble human IL-1 receptor. Specific epitopes are unknown, but they do partially inhibit (30-50 %) binding of one another to IL-1 receptor. They do not block binding of IL-1 to receptor, and they do not cross-react with receptors for Human IL-2 or IL-4.
Purification:	Affinity chromatography on Protein G

Target Details

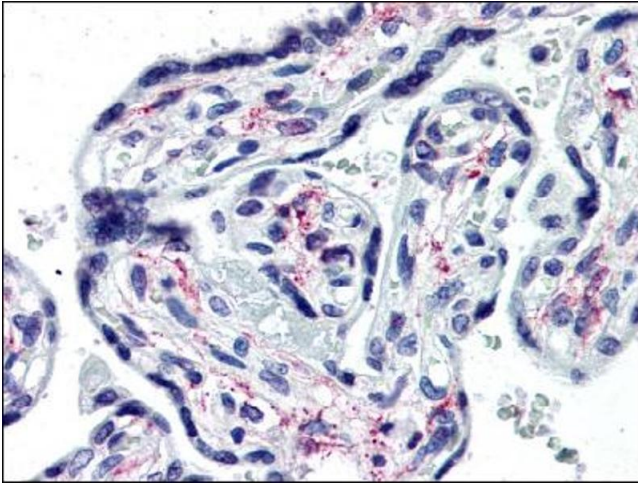
Target:	IL1R1
Alternative Name:	CD121a / IL1R1 (IL1R1 Products)
Background:	IL1R is a member of the interleukin 1 receptor family. An experiment with transient gene expression demonstrated that this receptor was incapable of binding to interleukin 1 alpha and interleukin 1 beta with high affinity. IL1R is a receptor for interleukin 1 family member 9 (IL1F9). Binding to the agonist leads to the activation of NF-kappa-B. The gene for this protein and four other interleukin 1 receptor family genes, including interleukin 1 receptor, type I (IL1R1), interleukin 1 receptor, type II (IL1R2), interleukin 1 receptor-like 1 (IL1RL1), and interleukin 18 receptor 1 (IL18R1), form a cytokine receptor gene cluster in a region mapped to chromosome 2q12. Synonyms: IL-1R-alpha, IL1R, IL1RA, IL1RT1, Interleukin-1 receptor alpha, Interleukin-1 receptor type 1, Interleukin-1 receptor type I
Gene ID:	3554
NCBI Accession:	NP_000868
UniProt:	P14778
Pathways:	NF-kappaB Signaling , Carbohydrate Homeostasis , Cancer Immune Checkpoints

Application Details

Application Notes:	Optimal working dilution should be determined by the investigator.
Restrictions:	For Research Use only

Handling

Concentration:	1,0 mg/mL
Buffer:	PBS, pH 7.4
Handling Advice:	Avoid repeated freezing and thawing.
Storage:	4 °C/-20 °C
Storage Comment:	Store the antibody undiluted at 2-8 °C for one month or (in aliquots) at -20 °C for longer.



Immunohistochemistry

Image 1.