



Datasheet for ABIN6144704
anti-NOL3 antibody (AA 1-208)



[Go to Product page](#)

4 Images

Overview

Quantity:	100 µL
Target:	NOL3
Binding Specificity:	AA 1-208
Reactivity:	Human
Host:	Rabbit
Clonality:	Polyclonal
Conjugate:	This NOL3 antibody is un-conjugated
Application:	Western Blotting (WB), Immunohistochemistry (IHC), Immunofluorescence (IF)

Product Details

Immunogen:	Recombinant fusion protein containing a sequence corresponding to amino acids 1-208 of human NOL3 (NP_003937.1).
Sequence:	MGNAQERPSE TIDRERKRLV ETLQADSGLL LDALLARGVL TGPEYEALDA LPDAERRVRR LLLLVQKGKE AACQELLRCA QRTAGAPDPA WDWQHVGPY RDRSYDPPCP GHWTPEAPGS GTTCPGLPRA SDPDEAGGPE GSEAVQSGTP EEPEPELEAE ASKEAPEPEPE PEPELEPEAE AEPEPELEPE PDPEPEPDFE ERDESEDS
Isotype:	IgG
Cross-Reactivity:	Human, Mouse, Rat
Characteristics:	Polyclonal Antibodies

Target Details

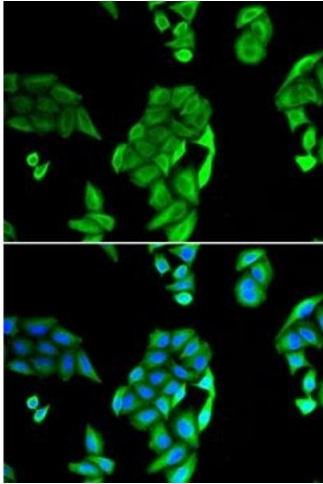
Target:	NOL3
Alternative Name:	NOL3 (NOL3 Products)
Background:	This gene encodes an anti-apoptotic protein that has been shown to down-regulate the enzyme activities of caspase 2, caspase 8 and tumor protein p53. Multiple transcript variants encoding different isoforms have been found for this gene.,NOL3,ARC,FCM,MYP,NOP,NOP30,Cell Biology & Developmental Biology,Apoptosis,Caspases,NOL3
Molecular Weight:	22 kDa/24 kDa/29 kDa
Gene ID:	8996
UniProt:	O60936

Application Details

Application Notes:	WB,1:500 - 1:2000,IHC,1:50 - 1:200,IF,1:10 - 1:100
Comment:	HIGH QUALITY
Restrictions:	For Research Use only

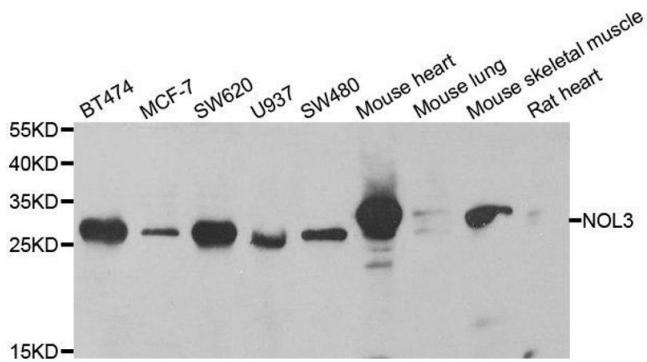
Handling

Format:	Liquid
Buffer:	PBS with 0.02 % sodium azide,50 % glycerol, pH 7.3.
Preservative:	Sodium azide
Precaution of Use:	This product contains Sodium azide: a POISONOUS AND HAZARDOUS SUBSTANCE which should be handled by trained staff only.
Storage:	-20 °C
Storage Comment:	Store at -20°C. Avoid freeze / thaw cycles.



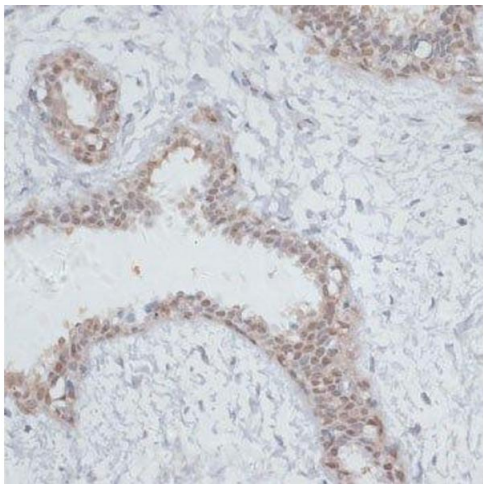
Immunofluorescence

Image 1. Immunofluorescence analysis of U2OS cells using NOL3 antibody (ABIN6132415, ABIN6144704, ABIN6144706 and ABIN6221927). Blue: DAPI for nuclear staining.



Western Blotting

Image 2. Western blot analysis of extracts of various cell lines, using NOL3 antibody.



Immunohistochemistry (Paraffin-embedded Sections)

Image 3. Immunohistochemistry of paraffin-embedded human breast using NOL3 antibody.

Please check the [product details page](#) for more images. Overall 4 images are available for ABIN6144704.