



[Go to Product page](#)

Datasheet for ABIN6144768
anti-NPHP1 antibody (AA 345-614)

7 Images

Overview

Quantity:	100 µL
Target:	NPHP1
Binding Specificity:	AA 345-614
Reactivity:	Human
Host:	Rabbit
Clonality:	Polyclonal
Conjugate:	This NPHP1 antibody is un-conjugated
Application:	Western Blotting (WB), Immunohistochemistry (IHC), Immunofluorescence (IF)

Product Details

Immunogen:	Recombinant fusion protein containing a sequence corresponding to amino acids 345-614 of human NPHP1 (NP_001121651.1).
Sequence:	PDLGILFELG ISYIRNSTGE RGELSCGWVF LKLFDasGVP IPAKTYELFL NGGTPYEKGI EVDPSISRRA HGSVFYQIMT MRRQPQLLVK LRSLNRRSRN VLSLLPETLI GNMCSIHLI FYRQILGDVL LKDRMSLQST DLISHPMLAT FPMLEQPDV MDALRSSWAG KESTLKRSEK RDKEFLKSTF LLVYHDCVLP LLHSTRLPPF RWAEETETA RWKVITDFLK QNQENQGALQ ALLSPDGVHE PFDLSEQTYD FLGEMRKNV
Isotype:	IgG
Cross-Reactivity:	Human, Mouse, Rat
Characteristics:	Polyclonal Antibodies

Target Details

Target:	NPHP1
Alternative Name:	NPHP1 (NPHP1 Products)
Background:	<p>This gene encodes a protein with src homology domain 3 (SH3) patterns. This protein interacts with Crk-associated substrate, and it appears to function in the control of cell division, as well as in cell-cell and cell-matrix adhesion signaling, likely as part of a multifunctional complex localized in actin- and microtubule-based structures. Mutations in this gene cause familial juvenile nephronophthisis type 1, a kidney disorder involving both tubules and glomeruli. Defects in this gene are also associated with Senior-Loken syndrome type 1, also referred to as juvenile nephronophthisis with Leber amaurosis, which is characterized by kidney and eye disease, and with Joubert syndrome type 4, which is characterized by cerebellar ataxia, oculomotor apraxia, psychomotor delay and neonatal breathing abnormalities, sometimes including retinal dystrophy and renal disease. Multiple transcript variants encoding different isoforms have been found for this gene.,NPHP1,JBTS4,NPH1,SLSN1,Signal Transduction,Kinase,Tyrosine kinases,Cell Biology & Developmental Biology,NPHP1</p>

Molecular Weight:	69 kDa/77 kDa/83 kDa
-------------------	----------------------

Gene ID:	4867
----------	------

UniProt:	015259
----------	------------------------

Application Details

Application Notes:	WB,1:500 - 1:2000,IHC,1:50 - 1:200,IF,1:50 - 1:200
--------------------	--

Comment:	HIGH QUALITY
----------	--------------

Restrictions:	For Research Use only
---------------	-----------------------

Handling

Format:	Liquid
---------	--------

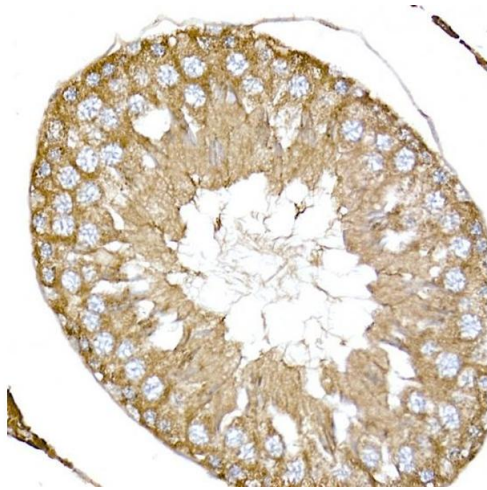
Buffer:	PBS with 0.02 % sodium azide,50 % glycerol, pH 7.3.
---------	---

Preservative:	Sodium azide
---------------	--------------

Precaution of Use:	This product contains Sodium azide: a POISONOUS AND HAZARDOUS SUBSTANCE which should be handled by trained staff only.
--------------------	--

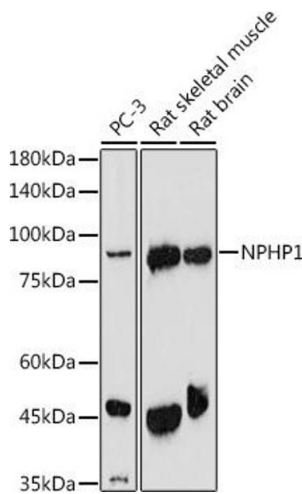
Storage:	-20 °C
----------	--------

Storage Comment:	Store at -20°C. Avoid freeze / thaw cycles.
------------------	---



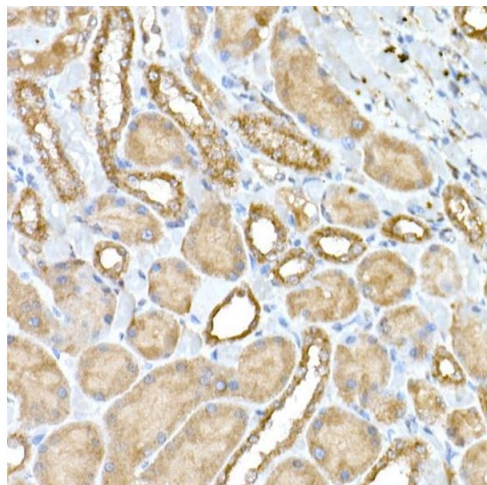
Immunohistochemistry

Image 1. Immunohistochemistry of paraffin-embedded rat testis using NPHP1 Rabbit pAb (ABIN6128349, ABIN6144768, ABIN6144769 and ABIN6222377) at dilution of 1:50 (40x lens). Perform high pressure antigen retrieval with 10 mM citrate buffer pH 6.0 before commencing with IHC staining protocol.



Western Blotting

Image 2. Western blot analysis of extracts of various cell lines, using NPHP1 antibody (ABIN6128349, ABIN6144768, ABIN6144769 and ABIN6222377) at 1:1000 dilution. Secondary antibody: HRP Goat Anti-Rabbit IgG (H+L) (ABIN1684268 and ABIN3020597) at 1:10000 dilution. Lysates/proteins: 25 µg per lane. Blocking buffer: 3 % nonfat dry milk in TBST. Detection: ECL Enhanced Kit (RM00021). Exposure time: 180s.



Immunohistochemistry

Image 3. Immunohistochemistry of paraffin-embedded rat kidney using NPHP1 Rabbit pAb (ABIN6128349, ABIN6144768, ABIN6144769 and ABIN6222377) at dilution of 1:50 (40x lens). Perform high pressure antigen retrieval with 10 mM citrate buffer pH 6.0 before commencing with IHC staining protocol.

Please check the [product details page](#) for more images. Overall 7 images are available for ABIN6144768.