



[Go to Product page](#)

Datasheet for ABIN6144772
anti-NPHP4 antibody (AA 1247-1426)

1 Image

Overview

Quantity:	100 µL
Target:	NPHP4
Binding Specificity:	AA 1247-1426
Reactivity:	Human
Host:	Rabbit
Clonality:	Polyclonal
Conjugate:	This NPHP4 antibody is un-conjugated
Application:	Western Blotting (WB)

Product Details

Immunogen:	Recombinant fusion protein containing a sequence corresponding to amino acids 1247-1426 of human NPHP4 (NP_055917.1).
Sequence:	RLSLVLRGTQ TVRKVRAFTS HPQELKTDPK GVFVLPFRGV QDLHVGVRPL RAGSRFVHLN LVDVDCHQLV ASWLVCLCCR QPLISKAFEI MLAAGEGKGV NKRITYTNPY PSRRTFHLHS DHPELLRFRE DSFQVGGGET YTIGLQFAPS QRVGEEIILI YINDHEDKNE EAFCKVIYQ
Isotype:	IgG
Cross-Reactivity:	Human, Mouse, Rat
Characteristics:	Polyclonal Antibodies

Target Details

Target:	NPHP4
---------	-------

Target Details

Alternative Name: NPHP4 ([NPHP4 Products](#))

Background: This gene encodes a protein involved in renal tubular development and function. This protein interacts with nephrocystin, and belongs to a multifunctional complex that is localized to actin- and microtubule-based structures. Mutations in this gene are associated with nephronophthisis type 4, a renal disease, and with Senior-Loken syndrome type 4, a combination of nephronophthisis and retinitis pigmentosa. Alternative splicing results in multiple transcript variants.,NPHP4,POC10,SLSN4,Signal Transduction,Cell Biology & Developmental Biology,Cell Cycle,Centrosome,Cell Adhesion,Tight Junctions,Cytoskeleton,NPHP4

Molecular Weight: 99 kDa/157 kDa

Gene ID: 261734

UniProt: [O75161](#)

Application Details

Application Notes: WB,1:500 - 1:2000

Restrictions: For Research Use only

Handling

Format: Liquid

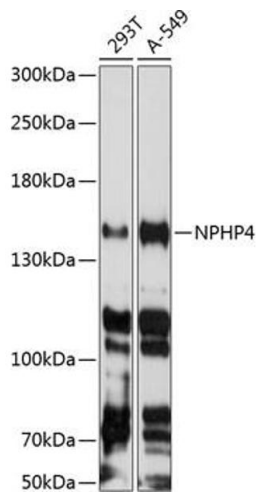
Buffer: PBS with 0.02 % sodium azide,50 % glycerol, pH 7.3.

Preservative: Sodium azide

Precaution of Use: This product contains Sodium azide: a POISONOUS AND HAZARDOUS SUBSTANCE which should be handled by trained staff only.

Storage: -20 °C

Storage Comment: Store at -20°C. Avoid freeze / thaw cycles.



Western Blotting

Image 1. Western blot analysis of extracts of various cell lines, using NPHP4 antibody at 1:3000 dilution. Secondary antibody: HRP Goat Anti-Rabbit IgG (H+L) (ABIN1684268 and ABIN3020597) at 1:10000 dilution. Lysates/proteins: 25 µg per lane. Blocking buffer: 3% nonfat dry milk in TBST. Detection: ECL Enhanced Kit (RM00021). Exposure time: 30s.