



Datasheet for ABIN6144832

anti-NR5A2 + LRH1 antibody (AA 1-140)



[Go to Product page](#)

5 Images

Overview

Quantity:	100 µL
Target:	NR5A2 + LRH1 (NR5A2)
Binding Specificity:	AA 1-140
Reactivity:	Human
Host:	Rabbit
Clonality:	Polyclonal
Conjugate:	This NR5A2 + LRH1 antibody is un-conjugated
Application:	Western Blotting (WB), Immunohistochemistry (IHC), Immunofluorescence (IF)

Product Details

Immunogen:	Recombinant fusion protein containing a sequence corresponding to amino acids 1-140 of human NR5A2 (NP_003813.1).
Sequence:	MSSNSDTGDL QESLKHGLTP IVSQFKMVNY SYDEDLEELC PVC GDKVSGY HYGLLTCESC KGFFKRTVQN NKRYTCIENQ NCQIDKTQRK RCPYCRFQKC LSVG MKLEAV RADRMRGGRN KFGPMYKRDR ALKQQKKALI
Isotype:	IgG
Cross-Reactivity:	Human, Mouse, Rat
Characteristics:	Polyclonal Antibodies

Target Details

Target:	NR5A2 + LRH1 (NR5A2)
---------	----------------------

Target Details

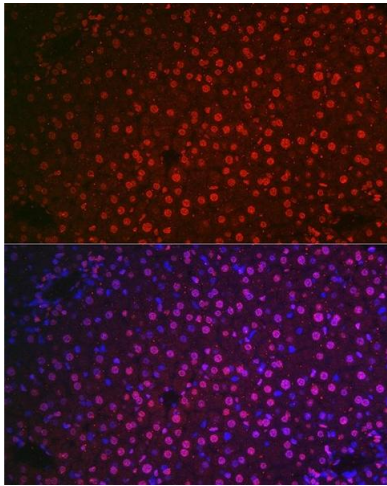
Alternative Name:	NR5A2 (NR5A2 Products)
Background:	The protein encoded by this gene is a DNA-binding zinc finger transcription factor and is a member of the fushi tarazu factor-1 subfamily of orphan nuclear receptors. The encoded protein is involved in the expression of genes for hepatitis B virus and cholesterol biosynthesis, and may be an important regulator of embryonic development.,NR5A2,B1F,B1F2,CPF,FTF,FTZ-F1,FTZ-F1beta,LRH-1,LRH1,hB1F-2,Epigenetics & Nuclear Signaling,Transcription Factors,Cell Biology & Developmental Biology,Stem Cells,Embryonic Stem Cells,NR5A2
Molecular Weight:	42 kDa/53 kDa/56 kDa/61 kDa
Gene ID:	2494
UniProt:	O00482
Pathways:	Nuclear Receptor Transcription Pathway , Steroid Hormone Mediated Signaling Pathway

Application Details

Application Notes:	WB,1:500 - 1:2000,IHC,1:50 - 1:200,IF,1:50 - 1:200
Restrictions:	For Research Use only

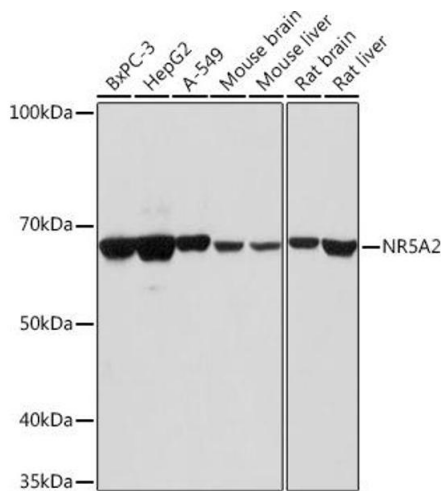
Handling

Format:	Liquid
Buffer:	PBS with 0.02 % sodium azide,50 % glycerol, pH 7.3.
Preservative:	Sodium azide
Precaution of Use:	This product contains Sodium azide: a POISONOUS AND HAZARDOUS SUBSTANCE which should be handled by trained staff only.
Storage:	-20 °C
Storage Comment:	Store at -20°C. Avoid freeze / thaw cycles.



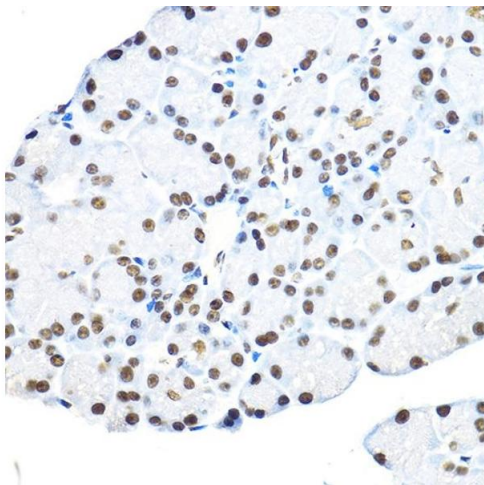
Immunofluorescence

Image 1. Immunofluorescence analysis of mouse liver cells using NR5 Rabbit pAb (ABIN6133574, ABIN6144832, ABIN6144834 and ABIN6217774) at dilution of 1:100 (40x lens). Blue: DAPI for nuclear staining.



Western Blotting

Image 2. Western blot analysis of extracts of various cell lines, using NR5 antibody (ABIN6133574, ABIN6144832, ABIN6144834 and ABIN6217774) at 1:1000 dilution. Secondary antibody: HRP Goat Anti-Rabbit IgG (H+L) (ABIN1684268 and ABIN3020597) at 1:10000 dilution. Lysates/proteins: 25 µg per lane. Blocking buffer: 3 % nonfat dry milk in TBST. Detection: ECL Basic Kit (RM00020). Exposure time: 30s.



Immunohistochemistry

Image 3. Immunohistochemistry of paraffin-embedded rat pancreas using NR5 Rabbit pAb (ABIN6133574, ABIN6144832, ABIN6144834 and ABIN6217774) at dilution of 1:100 (40x lens). Perform high pressure antigen retrieval with 10 mM citrate buffer pH 6.0 before commencing with IHC staining protocol.

Please check the [product details page](#) for more images. Overall 5 images are available for ABIN6144832.