

Datasheet for ABIN6144842
anti-NRBF2 antibody (AA 10-220)



[Go to Product page](#)

7 Images

Overview

Quantity:	100 µL
Target:	NRBF2
Binding Specificity:	AA 10-220
Reactivity:	Human
Host:	Rabbit
Clonality:	Polyclonal
Conjugate:	This NRBF2 antibody is un-conjugated
Application:	Western Blotting (WB), Immunofluorescence (IF)

Product Details

Immunogen:	Recombinant fusion protein containing a sequence corresponding to amino acids 10-220 of human NRBF2 (NP_110386.2).
Sequence:	LAHQQSRRAD RLLAAGKYEE AISCHKKAAA YLSEAMKLTQ SEQAHLSELEL QRDSHMKQLL LIQERWKRAQ REERLKAQQN TDKDAAHLQ TSHKPSAEDA EGQSPLSQKY SPSTEKCLPE IQGIFDRDPD TLLYLLQQKS EPAEPCIGSK APKDDKTIIE EQATKIADLK RHVEFLVAEN ERLRKENKQL KAEKARLLKG PIEKELDVDA D
Isotype:	IgG
Cross-Reactivity:	Human, Mouse, Rat
Characteristics:	Polyclonal Antibodies

Target Details

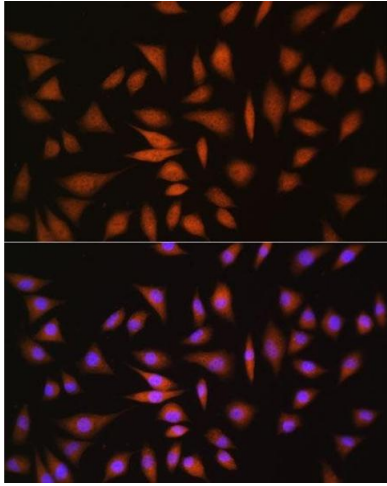
Target:	NRBF2
Alternative Name:	NRBF2 (NRBF2 Products)
Background:	May modulate transcriptional activation by target nuclear receptors. Can act as transcriptional activator (in vitro.,NRBF2,COPR,COPR1,COPR2,NRBF-2,Epigenetics & Nuclear Signaling,Nuclear Receptor Signaling,Nuclear hormone receptors,Signal Transduction,NRBF2
Molecular Weight:	26 kDa/31 kDa/32 kDa
Gene ID:	29982
UniProt:	Q96F24
Pathways:	Nuclear Receptor Transcription Pathway

Application Details

Application Notes:	WB,1:500 - 1:2000,IF,1:10 - 1:100
Comment:	HIGH QUALITY
Restrictions:	For Research Use only

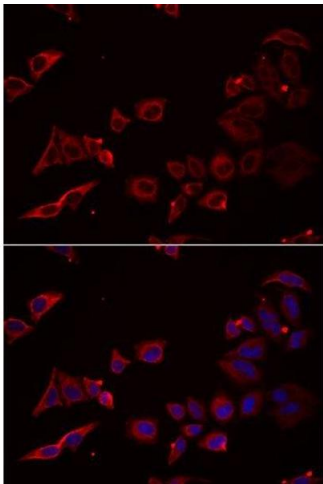
Handling

Format:	Liquid
Buffer:	PBS with 0.02 % sodium azide,50 % glycerol, pH 7.3.
Preservative:	Sodium azide
Precaution of Use:	This product contains Sodium azide: a POISONOUS AND HAZARDOUS SUBSTANCE which should be handled by trained staff only.
Storage:	-20 °C
Storage Comment:	Store at -20°C. Avoid freeze / thaw cycles.



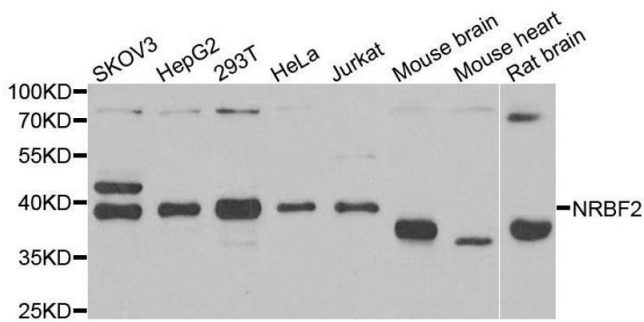
Immunofluorescence

Image 1. Immunofluorescence analysis of L929 cells using NRBF2 antibody at dilution of 1:100. Blue: DAPI for nuclear staining.



Immunofluorescence

Image 2. Immunofluorescence analysis of U2OS cells using NRBF2 antibody.



Western Blotting

Image 3. Western blot analysis of extracts of various cell lines, using NRBF2 antibody.

Please check the [product details page](#) for more images. Overall 7 images are available for ABIN6144842.