

Datasheet for ABIN6144848
anti-NRD1 antibody (AA 160-400)



[Go to Product page](#)

1 Image

Overview

Quantity:	100 µL
Target:	NRD1
Binding Specificity:	AA 160-400
Reactivity:	Human
Host:	Rabbit
Clonality:	Polyclonal
Conjugate:	This NRD1 antibody is un-conjugated
Application:	Western Blotting (WB), Immunohistochemistry (IHC)

Product Details

Immunogen:	Recombinant fusion protein containing a sequence corresponding to amino acids 160-400 of human NRD1 (NP_001095132.1).
Sequence:	SGAEIEDDDE EGFDDDEFD DEHDDDLDE DNELEELEER AEARKKTEK QSAAALCVGV GSFADPDDLPL GLAHFLEHMV FMGSLKYPDE NGFDAFLKKH GGSDNASTDC ERTVFQFDVQ RKYFKEALDR WAQFFIHPLM IRDAIDREVE AVDSEYQLAR PSDANRKEML FGSLARPGHP MGKFFWGNAE TLKHEPRKNN IDTHARLREF WMRYSSHYM TLVVQSKETL DTLEKQWTEI F
Isotype:	IgG
Cross-Reactivity:	Human, Mouse, Rat
Characteristics:	Polyclonal Antibodies

Target Details

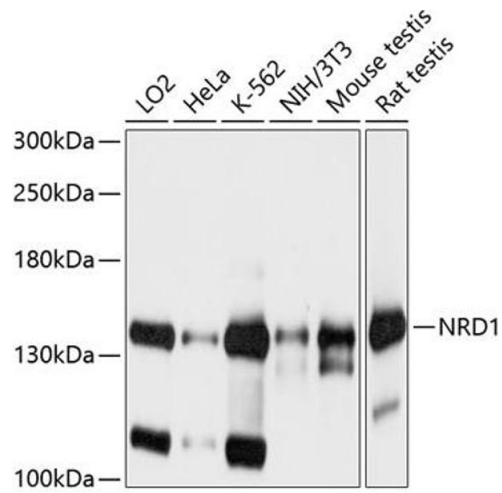
Target:	NRD1
Alternative Name:	NRD1 (NRD1 Products)
Background:	<p>This gene encodes a zinc-dependent endopeptidase that cleaves peptide substrates at the N-terminus of arginine residues in dibasic moieties and is a member of the peptidase M16 family. This protein interacts with heparin-binding EGF-like growth factor and plays a role in cell migration and proliferation. Multiple transcript variants encoding different isoforms have been found for this gene.,NRDC,NRD1,hNRD1,hNRD2,Cell Biology & Developmental Biology,Extracellular Matrix,MMPs,Ubiquitin,NRD1</p>
Molecular Weight:	131 kDa/139 kDa
Gene ID:	4898
UniProt:	O43847
Pathways:	Skeletal Muscle Fiber Development

Application Details

Application Notes:	WB,1:200 - 1:2000,IHC,1:50 - 1:200
Comment:	HIGH QUALITY
Restrictions:	For Research Use only

Handling

Format:	Liquid
Buffer:	PBS with 0.02 % sodium azide,50 % glycerol, pH 7.3.
Preservative:	Sodium azide
Precaution of Use:	This product contains Sodium azide: a POISONOUS AND HAZARDOUS SUBSTANCE which should be handled by trained staff only.
Storage:	-20 °C
Storage Comment:	Store at -20°C. Avoid freeze / thaw cycles.



Western Blotting

Image 1. Western blot analysis of extracts of various cell lines, using NRD1 antibody at 1:1000 dilution. Secondary antibody: HRP Goat Anti-Rabbit IgG (H+L) (ABIN1684268 and ABIN3020597) at 1:10000 dilution. Lysates/proteins: 25 µg per lane. Blocking buffer: 3% nonfat dry milk in TBST. Detection: ECL Basic Kit (RM00020). Exposure time: 1s.