



[Go to Product page](#)

Datasheet for ABIN6144873  
**anti-NSFL1C antibody (AA 1-185)**

3 Images

Overview

Quantity:	100 µL
Target:	NSFL1C
Binding Specificity:	AA 1-185
Reactivity:	Human
Host:	Rabbit
Clonality:	Polyclonal
Conjugate:	This NSFL1C antibody is un-conjugated
Application:	Western Blotting (WB), Immunofluorescence (IF), Immunoprecipitation (IP)

Product Details

Immunogen:	Recombinant fusion protein containing a sequence corresponding to amino acids 1-185 of human NSFL1C (NP_057227.2).
Sequence:	MAAERQEALR EFVAVTGAE E DRARFFLESA GWDLQIALAS FYEDGGDEDI VTISQATPSS VSRGTAPSDN RVTSEFRDLIH DQDEDEEEEE GQRFYAGGSE RSGQQIVGPP RKKSPNELVD DLFKGAKEHG AVAVERVTKS PGETSKPRPF AGGGYRLGAA PEEESAYVAG EKQRHSSQDV HVVLK
Isotype:	IgG
Cross-Reactivity:	Human, Mouse, Rat
Characteristics:	Polyclonal Antibodies

## Target Details

---

Target:	NSFL1C
Alternative Name:	NSFL1C ( <a href="#">NSFL1C Products</a> )
Background:	N-ethylmaleimide-sensitive factor (NSF) and valosin-containing protein (p97) are two ATPases known to be involved in transport vesicle/target membrane fusion and fusions between membrane compartments. A trimer of the protein encoded by this gene binds a hexamer of cytosolic p97 and is required for p97-mediated regrowth of Golgi cisternae from mitotic Golgi fragments. Alternative splicing results in multiple transcript variants. A related pseudogene has been identified on chromosome 8.,NSFL1C,P47,UBX1,UBXD10,UBXN2C,dJ776F14.1,Signal Transduction,NSFL1C
Molecular Weight:	28 kDa/37 kDa/40 kDa
Gene ID:	55968
UniProt:	<a href="#">Q9UNZ2</a>

## Application Details

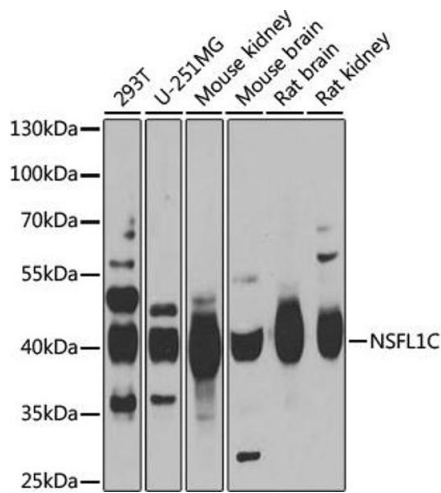
---

Application Notes:	WB,1:500 - 1:2000,IF,1:50 - 1:200,IP,1:50 - 1:100
Comment:	HIGH QUALITY
Restrictions:	For Research Use only

## Handling

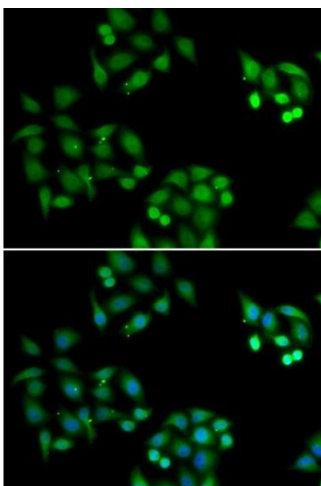
---

Format:	Liquid
Buffer:	PBS with 0.02 % sodium azide,50 % glycerol, pH 7.3.
Preservative:	Sodium azide
Precaution of Use:	This product contains Sodium azide: a POISONOUS AND HAZARDOUS SUBSTANCE which should be handled by trained staff only.
Storage:	-20 °C
Storage Comment:	Store at -20°C. Avoid freeze / thaw cycles.



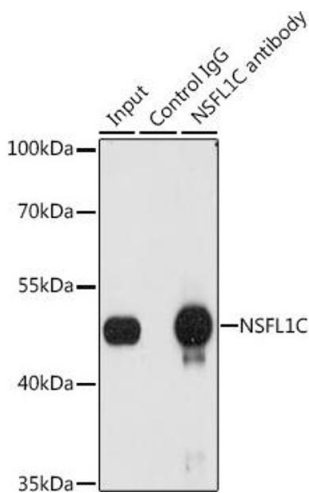
### Western Blotting

**Image 1.** Western blot analysis of extracts of various cell lines, using NSFL1C antibody (ABIN6131003, ABIN6144873, ABIN6144874 and ABIN6222382) at 1:1000 dilution. Secondary antibody: HRP Goat Anti-Rabbit IgG (H+L) (ABIN1684268 and ABIN3020597) at 1:10000 dilution. Lysates/proteins: 25 µg per lane. Blocking buffer: 3 % nonfat dry milk in TBST. Detection: ECL Basic Kit (RM00020). Exposure time: 1s.



### Immunofluorescence

**Image 2.** Immunofluorescence analysis of HeLa cells using NSFL1C antibody (ABIN6131003, ABIN6144873, ABIN6144874 and ABIN6222382). Blue: DAPI for nuclear staining.



### Immunoprecipitation

**Image 3.** Immunoprecipitation analysis of 200 µg extracts of A-549 cells, using 3 µg NSFL1C antibody (ABIN6131003, ABIN6144873, ABIN6144874 and ABIN6222382). Western blot was performed from the immunoprecipitate using NSFL1C antibody (ABIN6131003, ABIN6144873, ABIN6144874 and ABIN6222382) at a dilution of 1:1000.