

Datasheet for ABIN6144924
anti-NUDC antibody (AA 1-331)



[Go to Product page](#)

5 Images

Overview

Quantity:	100 µL
Target:	NUDC
Binding Specificity:	AA 1-331
Reactivity:	Human
Host:	Rabbit
Clonality:	Polyclonal
Conjugate:	This NUDC antibody is un-conjugated
Application:	Western Blotting (WB)

Product Details

Immunogen:	Recombinant fusion protein containing a sequence corresponding to amino acids 1-331 of human NUDC (NP_006591.1).
Sequence:	MGGEQEEERF DGMLLAMAQQ HEGGVQELVN TFFSFLRRKT DFFIGGEEGM AEKLITQTFS HHNQLAQKTR REKRARQAE RREKAERAAR LAKEAKSETS GPQIKELTDE EAERLQLEID QKKDAENHEA QLKNGSLDSP GKQDTEEDEE EDEKDKGKLK PNLGNGADLP NYRWTQTLSE LDLAVPFCVN FRLKGKDMVV DIQRRHLRVG LKGQPAIDG ELYNEVKVEE SSWLIEDGKV VTVHLEKINK MEWWSRLVSS DPEINTKKIN PENSKLSDLD SETRSMVEKM MYDQRQKSMG LPTSDEQKKQ EILKKFMDQH PEMDFSKAKF N
Isotype:	IgG
Cross-Reactivity:	Human, Mouse, Rat
Characteristics:	Polyclonal Antibodies

Target Details

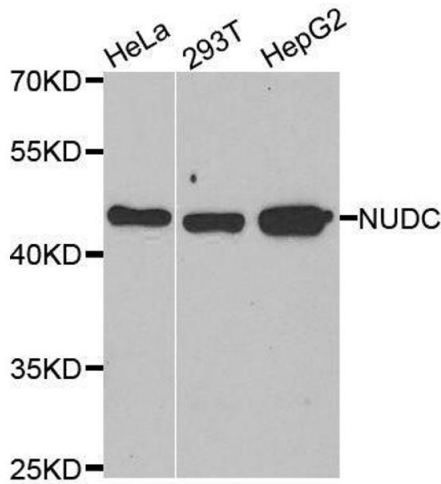
Target:	NUDC
Abstract:	NUDC Products
Background:	This gene encodes a nuclear distribution protein that plays an essential role in mitosis and cytokinesis. The encoded protein is involved in spindle formation during mitosis and in microtubule organization during cytokinesis. Pseudogenes of this gene are found on chromosome 2.,NUDC,HNUDC,MNUDC,NPD011,Cell Biology & Developmental Biology,Cell Cycle,Neuroscience,NUDC
Molecular Weight:	38 kDa
Gene ID:	10726
UniProt:	Q9Y266

Application Details

Application Notes:	WB,1:500 - 1:2000
Comment:	HIGH QUALITY
Restrictions:	For Research Use only

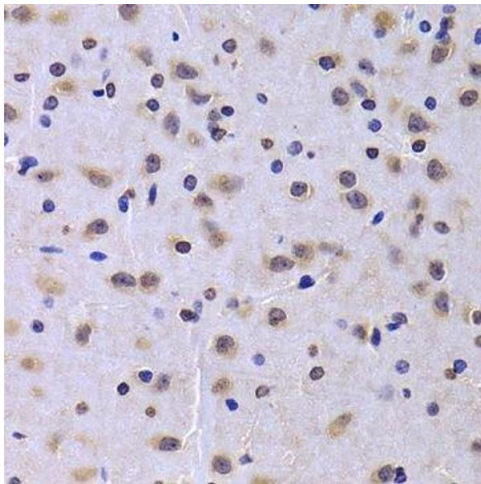
Handling

Format:	Liquid
Buffer:	PBS with 0.02 % sodium azide,50 % glycerol, pH 7.3.
Preservative:	Sodium azide
Precaution of Use:	This product contains Sodium azide: a POISONOUS AND HAZARDOUS SUBSTANCE which should be handled by trained staff only.
Storage:	-20 °C
Storage Comment:	Store at -20°C. Avoid freeze / thaw cycles.



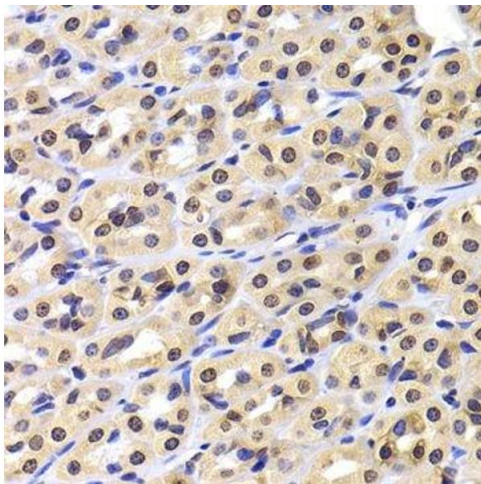
Western Blotting

Image 1. Western blot analysis of extracts of various cell lines, using NUDC antibody.



Immunohistochemistry (Paraffin-embedded Sections)

Image 2. Immunohistochemistry of paraffin-embedded rat brain using NUDC antibody.



Immunohistochemistry (Paraffin-embedded Sections)

Image 3. Immunohistochemistry of paraffin-embedded rat stomach using NUDC antibody.

Please check the [product details page](#) for more images. Overall 5 images are available for ABIN6144924.