

Datasheet for ABIN6144995
anti-Occludin antibody (AA 350-450)

3 Images

[Go to Product page](#)

Overview

Quantity:	100 µL
Target:	Occludin (OCLN)
Binding Specificity:	AA 350-450
Reactivity:	Human
Host:	Rabbit
Clonality:	Polyclonal
Conjugate:	This Occludin antibody is un-conjugated
Application:	Western Blotting (WB)

Product Details

Immunogen:	Recombinant fusion protein containing a sequence corresponding to amino acids 350-450 of human Occludin (NP_002529.1).
Sequence:	VVQELPLTSP VDDFRQPRYS SGGNFETPSK RAPAKGRAGR SKRTEQDHYE TDYTTGGESC DELEEDWIRE YPPITSDQQR QLYKRNFDTG LQEYKSLQSE L
Isotype:	IgG
Cross-Reactivity:	Human, Mouse, Rat
Characteristics:	Polyclonal Antibodies

Target Details

Target:	Occludin (OCLN)
---------	-----------------

Target Details

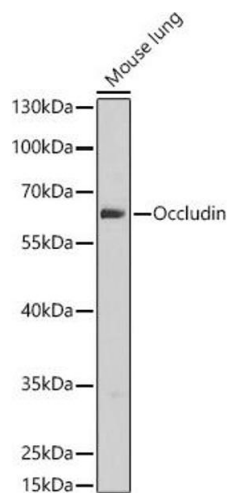
Alternative Name:	OCN (OCN Products)
Background:	<p>This gene encodes an integral membrane protein that is required for cytokine-induced regulation of the tight junction paracellular permeability barrier. Mutations in this gene are thought to be a cause of band-like calcification with simplified gyration and polymicrogyria (BLC-PMG), an autosomal recessive neurologic disorder that is also known as pseudo-TORCH syndrome. Alternative splicing results in multiple transcript variants. A related pseudogene is present 1.5 Mb downstream on the q arm of chromosome</p> <p>5.,OCN,BLCPMG,PPP1R115,PTORCH1,occludin,Occludin,Signal Transduction,Cell Biology & Developmental Biology,Apoptosis,Cell Adhesion,Tight Junctions,Cytoskeleton,OCN</p>
Molecular Weight:	8 kDa/23 kDa/31 kDa/52 kDa/54 kDa/59 kDa
Gene ID:	100506658
UniProt:	Q16625
Pathways:	Cell-Cell Junction Organization , Hepatitis C

Application Details

Application Notes:	WB,1:500 - 1:2000
Restrictions:	For Research Use only

Handling

Format:	Liquid
Buffer:	PBS with 0.02 % sodium azide,50 % glycerol, pH 7.3.
Preservative:	Sodium azide
Precaution of Use:	This product contains Sodium azide: a POISONOUS AND HAZARDOUS SUBSTANCE which should be handled by trained staff only.
Storage:	-20 °C
Storage Comment:	Store at -20°C. Avoid freeze / thaw cycles.

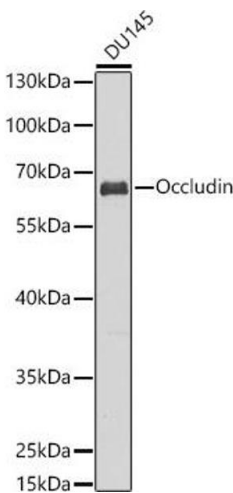
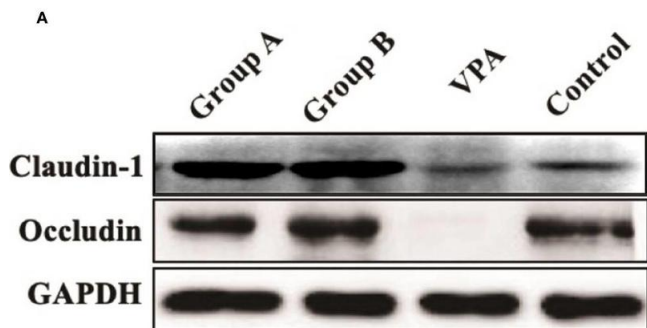


Western Blotting

Image 1. Western blot analysis of extracts of Mouse lung, using Occludin antibody (ABIN6129067, ABIN6144995, ABIN6144997 and ABIN6216324) at 1:1000 dilution. Secondary antibody: HRP Goat Anti-Rabbit IgG (H+L) (ABIN1684268 and ABIN3020597) at 1:10000 dilution. Lysates/proteins: 25 µg per lane. Blocking buffer: 3 % nonfat dry milk in TBST. Detection: ECL Basic Kit (RM00020). Exposure time: 30s.

Western Blotting

Image 2. Expression of claudin-1 and occludin in the colonic tissues of different groups. Downregulated expression of occludin after VPA treatment. Upregulated expression of claudin-1 and occludin after dietary n3/n6 (1:5) supplementation. (A) Representative Western blot images of the protein bands. (B) Fold change of Claudin-1. (C) Fold change of occludin. Results are presented as mean ± SEM. Differences were analyzed using one-way ANOVA followed by LSD test. n = 3 in each group. **P < 0.01, compared with VPA group. - figure provided by CiteAb. Source: PMID33033482



Western Blotting

Image 3. Western blot analysis of extracts of DU145 cells, using Occludin antibody (ABIN6129067, ABIN6144995, ABIN6144997 and ABIN6216324) at 1:1000 dilution. Secondary antibody: HRP Goat Anti-Rabbit IgG (H+L) (ABIN1684268 and ABIN3020597) at 1:10000 dilution. Lysates/proteins: 25 µg per lane. Blocking buffer: 3 % nonfat dry milk in TBST. Detection: ECL Basic Kit (RM00020). Exposure time: 15s.