



[Go to Product page](#)

Datasheet for ABIN6145003

## anti-alpha KGDHC antibody (AA 148-427)

5 Images

1 Publication

### Overview

Quantity:	100 µL
Target:	alpha KGDHC (alphaKGDHC)
Binding Specificity:	AA 148-427
Reactivity:	Human
Host:	Rabbit
Clonality:	Polyclonal
Conjugate:	This alpha KGDHC antibody is un-conjugated
Application:	Western Blotting (WB), Immunohistochemistry (IHC), Immunofluorescence (IF)

### Product Details

Immunogen:	Recombinant fusion protein containing a sequence corresponding to amino acids 148-427 of human OGDH (NP_001003941.1).
Sequence:	DPLGILDADL DSSVPADIIS STDKLGFYGL DESDLDKVFH LPTTTFIGGQ ESALPLREII RRLEMAYCQH IGVEFMFIND LEQCQWIRQK FETPGIMQFT NEEKRTLLAR LVRSTRFEEF LQRKWSSEKR FGLEGCEVLI PALKTIIDKS SENGVDYVIM GMPHRGRLNV LANVIRKELE QIFCQFDSKL EAADEGSGDV KYHLGMYHRR INRVTDNRIT LSLVANPSHL EAADPVVMGK TKAEQFYCGD TEGKKVRPRE RRARQIVKAP CSSMEFRSPT
Isotype:	IgG
Cross-Reactivity:	Human, Mouse, Rat
Characteristics:	Polyclonal Antibodies

## Target Details

---

Target:	alpha KGDHC (alphaKGDHC)
Alternative Name:	OGDH ( <a href="#">alphaKGDHC Products</a> )
Background:	<p>This gene encodes one subunit of the 2-oxoglutarate dehydrogenase complex. This complex catalyzes the overall conversion of 2-oxoglutarate (alpha-ketoglutarate) to succinyl-CoA and CO(2) during the Krebs cycle. The protein is located in the mitochondrial matrix and uses thiamine pyrophosphate as a cofactor. A congenital deficiency in 2-oxoglutarate dehydrogenase activity is believed to lead to hypotonia, metabolic acidosis, and hyperlactatemia. Alternative splicing results in multiple transcript variants encoding distinct isoforms.,OGDH,AKGDH,E1k,OGDC,Cancer,Signal Transduction,Endocrine &amp; Metabolism,Mitochondrial metabolism,Mitochondrial markers,Lipid Metabolism,Hydrolysis,Cardiovascular,Lipids,OGDH</p>
Molecular Weight:	48 kDa/115 kDa
Gene ID:	4967
UniProt:	<a href="#">Q02218</a>

## Application Details

---

Application Notes:	WB,1:500 - 1:2000,IHC,1:50 - 1:200,IF,1:10 - 1:100
Comment:	HIGH QUALITY
Restrictions:	For Research Use only

## Handling

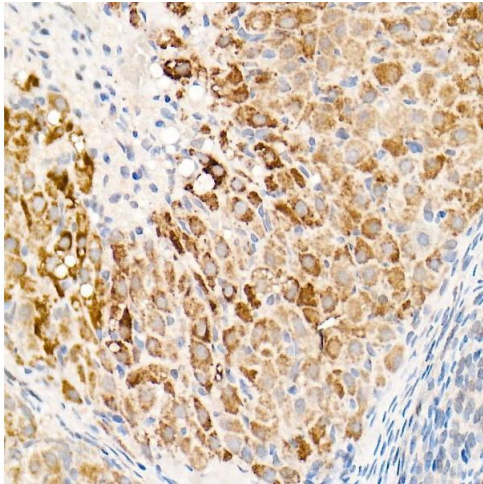
---

Format:	Liquid
Buffer:	PBS with 0.02 % sodium azide,50 % glycerol, pH 7.3.
Preservative:	Sodium azide
Precaution of Use:	This product contains Sodium azide: a POISONOUS AND HAZARDOUS SUBSTANCE which should be handled by trained staff only.
Storage:	-20 °C
Storage Comment:	Store at -20°C. Avoid freeze / thaw cycles.

## Publications

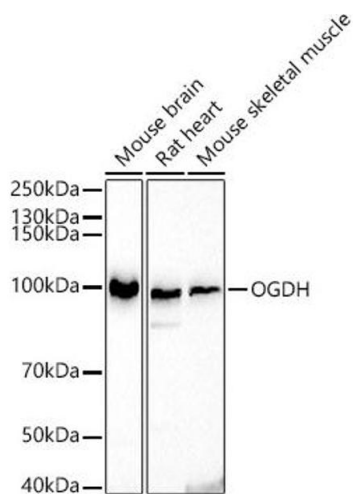
Product cited in: Zhang, Bai, Zhao, Li, Zhang, Li, Wang, Luo, Han, Zhang, Han, Cai, Su, Tao, Shi, Hu: "Cell-free therapy based on adipose tissue stem cell-derived exosomes promotes wound healing via the PI3K/Akt signaling pathway." in: **Experimental cell research**, Vol. 370, Issue 2, pp. 333-342, (2018) ([PubMed](#)).

## Images



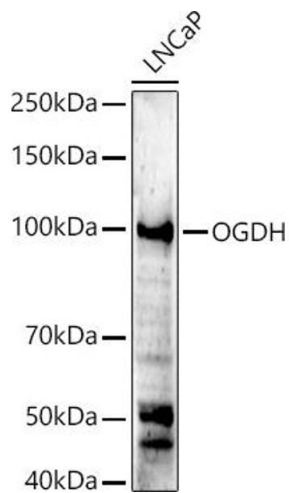
### Immunohistochemistry

**Image 1.** Immunohistochemistry of paraffin-embedded rat ovary using OGDH Rabbit pAb (ABIN6131414, ABIN6145003, ABIN6145005 and ABIN6222018) at dilution of 1:25 (40x lens). Perform high pressure antigen retrieval with 10 mM citrate buffer pH 6.0 before commencing with IHC staining protocol.



### Western Blotting

**Image 2.** Western blot analysis of extracts of various cell lines, using OGDH antibody (ABIN6131414, ABIN6145003, ABIN6145005 and ABIN6222018) at 1:500 dilution. Secondary antibody: HRP Goat Anti-Rabbit IgG (H+L) (ABIN1684268 and ABIN3020597) at 1:10035 dilution. Lysates/proteins: 60 µg per lane. Blocking buffer: 38 % nonfat dry milk in TBST. Detection: ECL Basic Kit (RM00055). Exposure time: 3s.



### Western Blotting

**Image 3.** Western blot analysis of extracts of LNCaP cells, using OGDH antibody (ABIN6131414, ABIN6145003, ABIN6145005 and ABIN6222018) at 1:500 dilution. Secondary antibody: HRP Goat Anti-Rabbit IgG (H+L) (ABIN1684268 and ABIN3020597) at 1:10036 dilution. Lysates/proteins: 61 µg per lane. Blocking buffer: 39 % nonfat dry milk in TBST. Detection: ECL Enhanced Kit (RM00021). Exposure time: 90s.

Please check the [product details page](#) for more images. Overall 5 images are available for ABIN6145003.