



Datasheet for ABIN6145010
anti-OLA1 antibody (AA 297-396)



[Go to Product page](#)

5 Images

Overview

Quantity:	100 µL
Target:	OLA1
Binding Specificity:	AA 297-396
Reactivity:	Human
Host:	Rabbit
Clonality:	Polyclonal
Conjugate:	This OLA1 antibody is un-conjugated
Application:	Western Blotting (WB), Immunohistochemistry (IHC), Immunofluorescence (IF)

Product Details

Immunogen:	Recombinant fusion protein containing a sequence corresponding to amino acids 297-396 of human OLA1 (NP_037473.3).
Sequence:	KAGFAALQLE YFFTAGPDEV RAWTIRKGTK APQAAGKIHT DFEKGFIMAE VMKYEDFKEE GSENAVKAAG KYRQQGRNYI VEDGDIIFFK FNTPQQPKKK
Isotype:	IgG
Cross-Reactivity:	Human, Mouse, Rat
Characteristics:	Polyclonal Antibodies

Target Details

Target:	OLA1
---------	------

Target Details

Alternative Name: OLA1 ([OLA1 Products](#))

Background: This gene encodes a member of the GTPase protein family. The encoded protein interacts with breast cancer-associated gene 1 (BRCA1) and BRCA1-associated RING domain protein (BARD1), and is involved in centrosome regulation. Overexpression of this gene has been observed in multiple types of cancer and may be associated with poor survival. Pseudogenes of this gene have been defined on chromosomes 17 and 22. [provided by RefSeq, Jun 2016],OLA1,DOC45,GBP45,GTBP9,GTPBP9,PTD004,Signal Transduction,Cell Biology & Developmental Biology,OLA1

Molecular Weight: 27 kDa/31 kDa/44 kDa

Gene ID: 29789

UniProt: [Q9NTK5](#)

Application Details

Application Notes: WB,1:500 - 1:2000,IHC,1:50 - 1:200,IF,1:50 - 1:200

Restrictions: For Research Use only

Handling

Format: Liquid

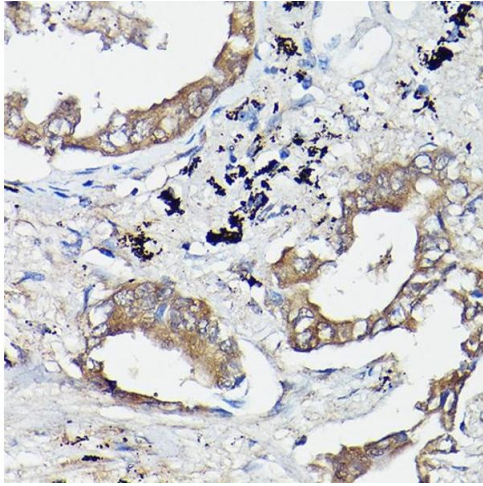
Buffer: PBS with 0.02 % sodium azide,50 % glycerol, pH 7.3.

Preservative: Sodium azide

Precaution of Use: This product contains Sodium azide: a POISONOUS AND HAZARDOUS SUBSTANCE which should be handled by trained staff only.

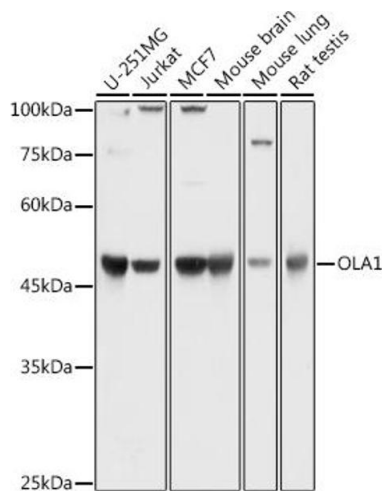
Storage: -20 °C

Storage Comment: Store at -20°C. Avoid freeze / thaw cycles.



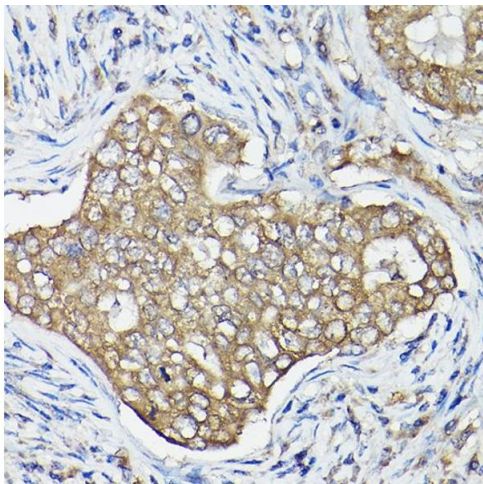
Immunohistochemistry

Image 1. Immunohistochemistry of paraffin-embedded human lung cancer using OL Rabbit pAb (1671) at dilution of 1:100 (40x lens). Perform high pressure antigen retrieval with 10 mM citrate buffer pH 6.0 before commencing with IHC staining protocol.



Western Blotting

Image 2. Western blot analysis of extracts of various cell lines, using OL antibody (1671) at 1:1000 dilution. Secondary antibody: HRP Goat Anti-Rabbit IgG (H+L) (ABIN1684268 and ABIN3020597) at 1:10000 dilution. Lysates/proteins: 25 µg per lane. Blocking buffer: 3% nonfat dry milk in TBST. Detection: ECL Basic Kit (RM00020). Exposure time: 1s.



Immunohistochemistry

Image 3. Immunohistochemistry of paraffin-embedded human breast cancer using OL Rabbit pAb (1671) at dilution of 1:100 (40x lens). Perform high pressure antigen retrieval with 10 mM citrate buffer pH 6.0 before commencing with IHC staining protocol.

Please check the [product details page](#) for more images. Overall 5 images are available for ABIN6145010.