



[Go to Product page](#)

Datasheet for ABIN6145019
anti-OLR1 antibody (AA 1-100)

1 Image

Overview

Quantity:	100 µL
Target:	OLR1
Binding Specificity:	AA 1-100
Reactivity:	Human
Host:	Rabbit
Clonality:	Polyclonal
Conjugate:	This OLR1 antibody is un-conjugated
Application:	Western Blotting (WB)

Product Details

Immunogen:	A synthetic peptide corresponding to a sequence within amino acids 1-100 of human OLR1 (NP_002534.1).
Sequence:	MTFDDLKIQT VKDQPDEKSN GKKAKGLQFL YSPWWCLAAA TLGVLCLGLV VTIMVLGMQL SQVSDLLTQE QANLTHQKKK LEGQISARQQ AEEASQESEN
Isotype:	IgG
Cross-Reactivity:	Mouse
Characteristics:	Polyclonal Antibodies

Target Details

Target:	OLR1
---------	------

Target Details

Alternative Name: [OLR1 \(OLR1 Products\)](#)

Background: This gene encodes a low density lipoprotein receptor that belongs to the C-type lectin superfamily. This gene is regulated through the cyclic AMP signaling pathway. The encoded protein binds, internalizes and degrades oxidized low-density lipoprotein. This protein may be involved in the regulation of Fas-induced apoptosis. This protein may play a role as a scavenger receptor. Mutations of this gene have been associated with atherosclerosis, risk of myocardial infarction, and may modify the risk of Alzheimer's disease. Alternate splicing results in multiple transcript variants.,[OLR1](#),[CLEC8A](#),[LOX1](#),[LOXIN](#),[SCARE1](#),[SLOX1](#),[Cancer](#),[Endocrine & Metabolism](#),[Lipid Metabolism](#),[Cholesterol Metabolism](#),[Cardiovascular](#),[Lipids](#),[OLR1](#)

Molecular Weight: 20 kDa/21 kDa/30 kDa

Gene ID: 4973

UniProt: [P78380](#)

Application Details

Application Notes: WB,1:500 - 1:1000

Comment: HIGH QUALITY

Restrictions: For Research Use only

Handling

Format: Liquid

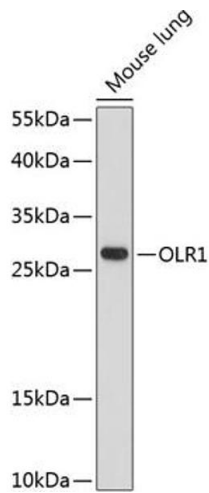
Buffer: PBS with 0.02 % sodium azide,50 % glycerol, pH 7.3.

Preservative: Sodium azide

Precaution of Use: This product contains Sodium azide: a POISONOUS AND HAZARDOUS SUBSTANCE which should be handled by trained staff only.

Storage: -20 °C

Storage Comment: Store at -20°C. Avoid freeze / thaw cycles.



Western Blotting

Image 1. Western blot analysis of extracts of mouse lung, using OLR1 antibody (ABIN6134598, ABIN6145019, ABIN6145020 and ABIN6215630) at 1:1000 dilution. Secondary antibody: HRP Goat Anti-Rabbit IgG (H+L) (ABIN1684268 and ABIN3020597) at 1:10000 dilution. Lysates/proteins: 25 µg per lane. Blocking buffer: 3 % nonfat dry milk in TBST. Detection: ECL Enhanced Kit (RM00021). Exposure time: 90s.