



[Go to Product page](#)

Datasheet for ABIN6145083
anti-OTP antibody (AA 1-130)

2 Images

Overview

Quantity:	100 µL
Target:	OTP
Binding Specificity:	AA 1-130
Reactivity:	Human
Host:	Rabbit
Clonality:	Polyclonal
Conjugate:	This OTP antibody is un-conjugated
Application:	Western Blotting (WB), Immunohistochemistry (IHC), Immunofluorescence (IF)

Product Details

Immunogen:	Recombinant fusion protein containing a sequence corresponding to amino acids 1-130 of human OTP (NP_115485.1).
Sequence:	MLSHADLLDA RLG MKDAAEL LGHREAVKCR LGVGGSDPGG HPGDLAPNSD PVEGATLLPG EDITTVGSTP ASLAVSAKDP DKQPGPQGGP NPSQAGQQQG QKQKRRHRTR FTPAQLNELE RSFAKTHYPD
Isotype:	IgG
Cross-Reactivity:	Human, Mouse, Rat
Characteristics:	Polyclonal Antibodies

Target Details

Target:	OTP
---------	-----

Target Details

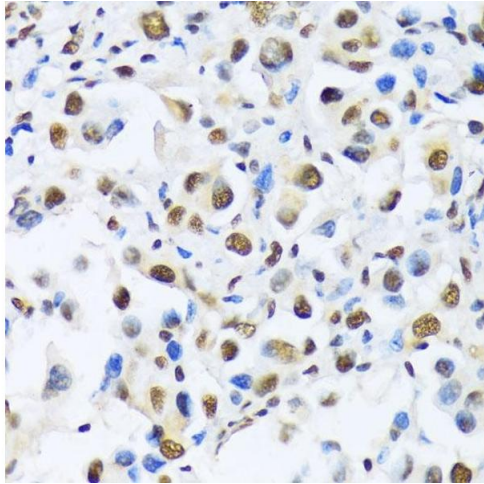
Alternative Name:	OTP (OTP Products)
Background:	This gene encodes a member of the homeodomain (HD) family. HD family proteins are helix-turn-helix transcription factors that play key roles in the specification of cell fates. This protein may function during brain development.,OTP,Epigenetics & Nuclear Signaling,Transcription Factors,Neuroscience,OTP
Molecular Weight:	34 kDa
Gene ID:	23440
UniProt:	Q5XKR4

Application Details

Application Notes:	WB,1:500 - 1:2000,IHC,1:50 - 1:200,IF,1:50 - 1:100
Comment:	HIGH QUALITY
Restrictions:	For Research Use only

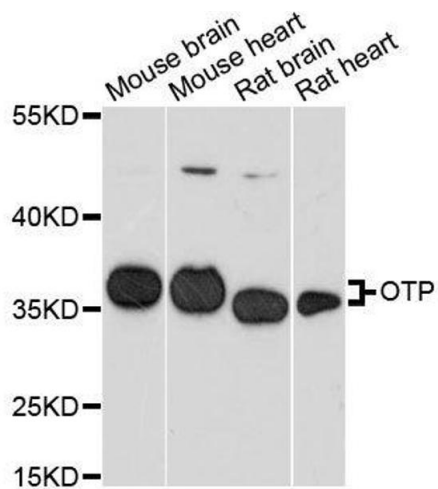
Handling

Format:	Liquid
Buffer:	PBS with 0.02 % sodium azide,50 % glycerol, pH 7.3.
Preservative:	Sodium azide
Precaution of Use:	This product contains Sodium azide: a POISONOUS AND HAZARDOUS SUBSTANCE which should be handled by trained staff only.
Storage:	-20 °C
Storage Comment:	Store at -20°C. Avoid freeze / thaw cycles.



Immunohistochemistry

Image 1. Immunohistochemistry of paraffin-embedded human lung cancer using OTP antibody (ABIN6132447, ABIN6145083, ABIN6145084 and ABIN6217092) at dilution of 1:100 (40x lens). Perform microwave antigen retrieval with 10 mM PBS buffer pH 7.2 before commencing with IHC staining protocol.



Western Blotting

Image 2. Western blot analysis of extracts of various cell lines, using OTP antibody.