



[Go to Product page](#)

Datasheet for ABIN614514

anti-PRSS1 antibody

2 Images

Overview

Quantity:	50 µg
Target:	PRSS1
Reactivity:	Human
Host:	Mouse
Clonality:	Monoclonal
Conjugate:	This PRSS1 antibody is un-conjugated
Application:	Enzyme Immunoassay (EIA), Immunohistochemistry (Paraffin-embedded Sections) (IHC (p))

Product Details

Immunogen:	Purified Human pancreatic Trypsin.
Clone:	N-a
Isotype:	IgG2b
Cross-Reactivity (Details):	Species reactivity (tested):Human.
Purification:	Protein G Chromatography

Target Details

Target:	PRSS1
Alternative Name:	Trypsin-1 / PRSS1 (PRSS1 Products)
Background:	Trypsin is a 24 kDa enzyme of the serine proteinase family. It is produced in the pancreas as an inactive precursor, trypsinogen, but the active enzyme is located in the gastrointestinal tract

Target Details

where it degrades proteins to large peptides. Trypsin prefers lysine and arginine residues. One of the substrates for trypsin is chymotrypsinogen which is cleaved to produce active chymotrypsin. High levels of immunoreactive trypsin in the bloodstream can indicate pancreatic malfunction and this indicator is used to screen for and diagnose Cystic Fibrosis.

Gene ID: 9606

UniProt: [P07477](#)

Application Details

Application Notes: Optimal working dilution should be determined by the investigator.

Restrictions: For Research Use only

Handling

Concentration: 0.9 mg/mL

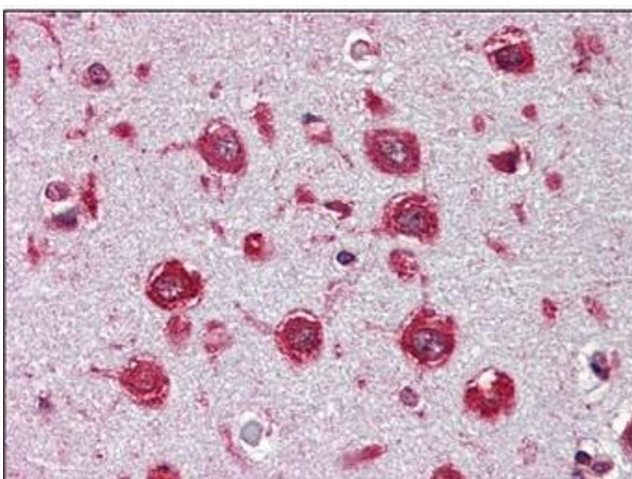
Buffer: PBS, pH 7.4

Handling Advice: Avoid repeated freezing and thawing.

Storage: 4 °C/-20 °C

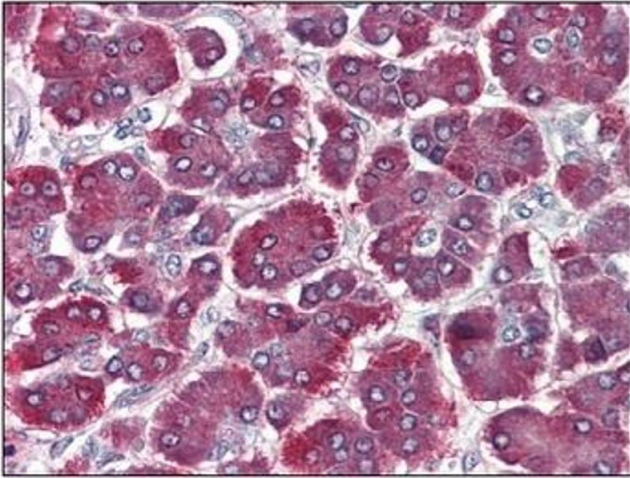
Storage Comment: Store the antibody undiluted at 2-8 °C for one month or (in aliquots) at -20 °C for longer.

Images



Immunohistochemistry

Image 1.



Immunohistochemistry

Image 2.