



[Go to Product page](#)

Datasheet for ABIN6145192
anti-PALB2 antibody (AA 99-198)

1 Image

Overview

Quantity:	100 µL
Target:	PALB2
Binding Specificity:	AA 99-198
Reactivity:	Human
Host:	Rabbit
Clonality:	Polyclonal
Conjugate:	This PALB2 antibody is un-conjugated
Application:	Western Blotting (WB)

Product Details

Immunogen:	Recombinant fusion protein containing a sequence corresponding to amino acids 99-198 of human PALB2 (NP_078951.2).
Sequence:	TLDVGPESFN PGDGPGLPI QRTDDTQEHF PHRVSDPSGE QKQKLPSRRK KQKRTFISQ ERDCVFGTDS LRLSGKRLKE QEEISSKNPA RSPVTEIRTH
Isotype:	IgG
Cross-Reactivity:	Human
Characteristics:	Polyclonal Antibodies

Target Details

Target:	PALB2
---------	-------

Target Details

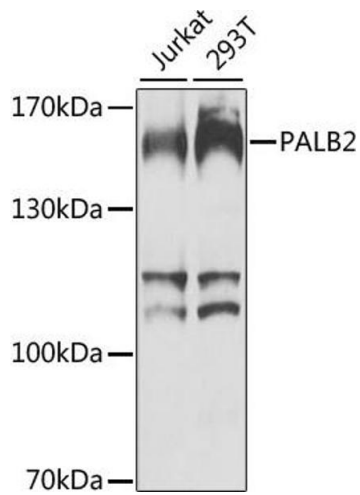
Alternative Name:	PALB2 (PALB2 Products)
Background:	This gene encodes a protein that may function in tumor suppression. This protein binds to and colocalizes with the breast cancer 2 early onset protein (BRCA2) in nuclear foci and likely permits the stable intranuclear localization and accumulation of BRCA2.,PALB2,FANCN,PNCA3,Epigenetics & Nuclear Signaling,DNA Damage & Repair,Cancer,PALB2
Molecular Weight:	131 kDa
Gene ID:	79728
UniProt:	Q86YC2
Pathways:	DNA Damage Repair

Application Details

Application Notes:	WB,1:500 - 1:2000
Comment:	HIGH QUALITY
Restrictions:	For Research Use only

Handling

Format:	Liquid
Buffer:	PBS with 0.02 % sodium azide,50 % glycerol, pH 7.3.
Preservative:	Sodium azide
Precaution of Use:	This product contains Sodium azide: a POISONOUS AND HAZARDOUS SUBSTANCE which should be handled by trained staff only.
Storage:	-20 °C
Storage Comment:	Store at -20°C. Avoid freeze / thaw cycles.



Western Blotting

Image 1. Western blot analysis of extracts of various cell lines, using P antibody (ABIN6128412, ABIN6145192, ABIN6145193 and ABIN6224413) at 1:1000 dilution. Secondary antibody: HRP Goat Anti-Rabbit IgG (H+L) (ABIN1684268 and ABIN3020597) at 1:10000 dilution. Lysates/proteins: 25 µg per lane. Blocking buffer: 3 % nonfat dry milk in TBST. Detection: ECL Basic Kit (RM00020). Exposure time: 60s.