

Datasheet for ABIN6145196
anti-PALLD antibody (AA 383-672)



[Go to Product page](#)

6 Images

Overview

Quantity:	100 µL
Target:	PALLD
Binding Specificity:	AA 383-672
Reactivity:	Human
Host:	Rabbit
Clonality:	Polyclonal
Conjugate:	This PALLD antibody is un-conjugated
Application:	Western Blotting (WB), Immunohistochemistry (IHC), Immunoprecipitation (IP), Immunofluorescence (IF)

Product Details

Immunogen:	Recombinant fusion protein containing a sequence corresponding to amino acids 383-672 of human PALLD (NP_001159582.1).
Sequence:	AVNQRGRSPR SPSGPHVRR PRSRSDSGD ENEPIQERFF RPHFLQAPGD LTVQEGKLCR MDCKVSGGLPT PDLWQLDGK PVRPDSAHKM LVRENGVHSL IIEPVTSRDA GIYTCIATNR AGQNSFSLEL VAAKEAHKP PVFIEKLQNT GVADGYPVRL ECRVLGVPPP QIFWKKENES LTHSTDRVSM HQDNHGYICL LIQGATKEDA GWYTVSAKNE AGIVSCTARL DVYQTQWHQQS QSTKPKKVRP SASRYAALSD QGLDIKAAFQ PEANPSHLTL NTALVEEDL
Isotype:	IgG
Cross-Reactivity:	Human, Mouse, Rat
Characteristics:	Polyclonal Antibodies

Target Details

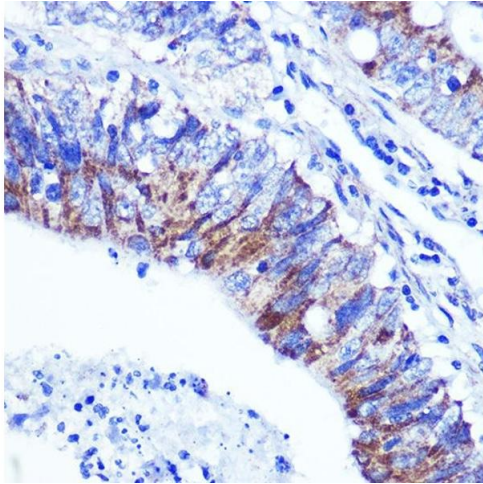
Target:	PALLD
Alternative Name:	PALLD (PALLD Products)
Background:	<p>This gene encodes a cytoskeletal protein that is required for organizing the actin cytoskeleton. The protein is a component of actin-containing microfilaments, and it is involved in the control of cell shape, adhesion, and contraction. Polymorphisms in this gene are associated with a susceptibility to pancreatic cancer type 1, and also with a risk for myocardial infarction.</p> <p>Alternative splicing results in multiple transcript variants.,PALLD,CGI-151,CGI151,MYN,PNCA1,SIH002,palladin,Signal Transduction,Cell Biology & Developmental Biology,Cytoskeleton,Microfilaments,PALLD</p>
Molecular Weight:	42 kDa/58 kDa/73 kDa/85-150 kDa
Gene ID:	23022
UniProt:	Q8WX93

Application Details

Application Notes:	WB,1:500 - 1:2000,IHC,1:50 - 1:200,IF,1:50 - 1:200,IP,1:50 - 1:200
Restrictions:	For Research Use only

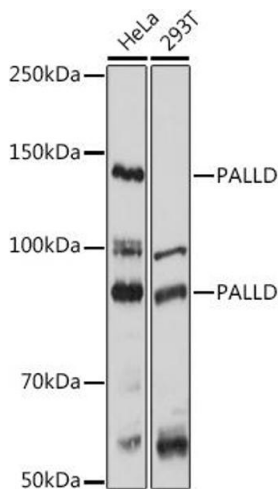
Handling

Format:	Liquid
Buffer:	PBS with 0.02 % sodium azide,50 % glycerol, pH 7.3.
Preservative:	Sodium azide
Precaution of Use:	This product contains Sodium azide: a POISONOUS AND HAZARDOUS SUBSTANCE which should be handled by trained staff only.
Storage:	-20 °C
Storage Comment:	Store at -20°C. Avoid freeze / thaw cycles.



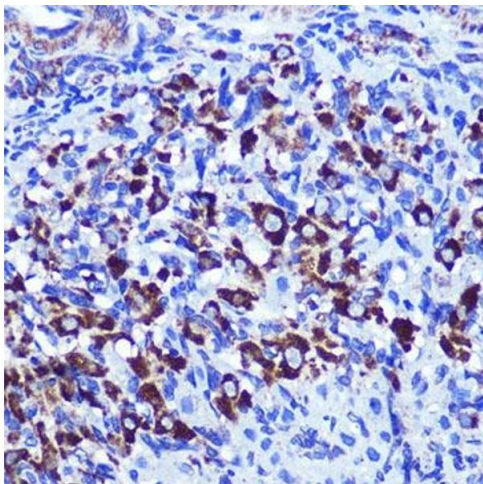
Immunohistochemistry

Image 1. Immunohistochemistry of paraffin-embedded human colon carcinoma using PALLD Rabbit pAb at dilution of 1:100 (40x lens). Perform microwave antigen retrieval with 10 mM PBS buffer pH 7.2 before commencing with IHC staining protocol.



Western Blotting

Image 2. Western blot analysis of extracts of various cell lines, using PALLD antibody at 1:1000 dilution. Secondary antibody: HRP Goat Anti-Rabbit IgG (H+L) (ABIN1684268 and ABIN3020597) at 1:10000 dilution. Lysates/proteins: 25 µg per lane. Blocking buffer: 3% nonfat dry milk in TBST. Detection: ECL Basic Kit (RM00020). Exposure time: 30s.



Immunohistochemistry

Image 3. Immunohistochemistry of paraffin-embedded rat ovary using PALLD Rabbit pAb at dilution of 1:100 (40x lens). Perform microwave antigen retrieval with 10 mM PBS buffer pH 7.2 before commencing with IHC staining protocol.

Please check the [product details page](#) for more images. Overall 6 images are available for ABIN6145196.