



[Go to Product page](#)

Datasheet for ABIN6145200
anti-MAGMAS antibody (AA 21-125)

1 Image

Overview

Quantity:	100 µL
Target:	MAGMAS (PAM16)
Binding Specificity:	AA 21-125
Reactivity:	Human
Host:	Rabbit
Clonality:	Polyclonal
Conjugate:	This MAGMAS antibody is un-conjugated
Application:	Western Blotting (WB)

Product Details

Immunogen:	Recombinant fusion protein containing a sequence corresponding to amino acids 21-125 of human PAM16 (NP_057153.8).
Sequence:	ARALRQEFAA SRAAADARGR AGHRSAASN LSGLSLQEAQ QILNVSKLSP EEVQKNYEHL FKVNDKSVGG SFYLQSKVVR AKERLDEELK IQAQEDREKG QMPHT
Isotype:	IgG
Cross-Reactivity:	Human, Mouse
Characteristics:	Polyclonal Antibodies

Target Details

Target:	MAGMAS (PAM16)
---------	----------------

Target Details

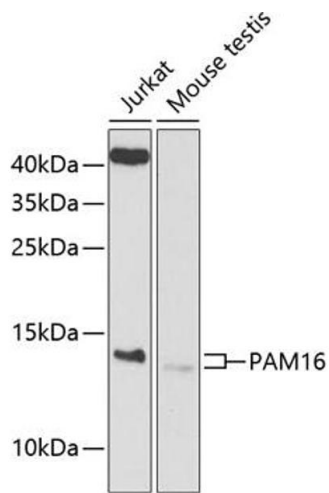
Alternative Name:	PAM16 (PAM16 Products)
Background:	Regulates ATP-dependent protein translocation into the mitochondrial matrix. Inhibits DNAJC19 stimulation of HSPA9/Mortalin ATPase activity.,PAM16,CGI-136,MAGMAS,SMDMDM,TIM16,TIMM16,Signal Transduction,Endocrine & Metabolism,Mitochondrial metabolism,PAM16
Molecular Weight:	13 kDa
Gene ID:	51025
UniProt:	Q9Y3D7

Application Details

Application Notes:	WB,1:500 - 1:2000
Restrictions:	For Research Use only

Handling

Format:	Liquid
Buffer:	PBS with 0.02 % sodium azide,50 % glycerol, pH 7.3.
Preservative:	Sodium azide
Precaution of Use:	This product contains Sodium azide: a POISONOUS AND HAZARDOUS SUBSTANCE which should be handled by trained staff only.
Storage:	-20 °C
Storage Comment:	Store at -20°C. Avoid freeze / thaw cycles.



Western Blotting

Image 1. Western blot analysis of extracts of various cell lines, using P antibody (ABIN6133374, ABIN6145200, ABIN6145201 and ABIN6225214) at 1:1000 dilution. Secondary antibody: HRP Goat Anti-Rabbit IgG (H+L) (ABIN1684268 and ABIN3020597) at 1:10000 dilution. Lysates/proteins: 25 µg per lane. Blocking buffer: 3 % nonfat dry milk in TBST. Detection: ECL Basic Kit (RM00020). Exposure time: 90s.