

Datasheet for ABIN6145213  
**anti-PAP Associated Domain Containing 7 (PAPD7) (AA 303-542) antibody**



[Go to Product page](#)

2 Images

Overview

Quantity:	100 µL
Target:	PAP Associated Domain Containing 7 (PAPD7)
Binding Specificity:	AA 303-542
Reactivity:	Human
Host:	Rabbit
Clonality:	Polyclonal
Conjugate:	Un-conjugated
Application:	Western Blotting (WB), Immunohistochemistry (IHC)

Product Details

Immunogen:	Recombinant fusion protein containing a sequence corresponding to amino acids 303-542 of human PAPD7 (NP_008930.1).
Sequence:	GSKAHPSPGM DSRIKIKERI ATCNGEQTN REPESPYGQR LTLSSLSPQL LSSGSSASSV SSLSGSDVDS DTPPCTTPSV YQFSLQAPAP LMAGLPTALP MPSGKQPPTT SRTLIMTTNN QTRFTIPPPT LGVAPVPCRQ AGVEGTASK AVHHMSSPAI PSASPNPLSS PHLYHKQHNG MKLSMKGSHG HTQGGGYSSV GSGGVRPPVG NRGHHQYNRT GWRKHTHT RDSLPLVLSR
Isotype:	IgG
Cross-Reactivity:	Human, Mouse, Rat
Characteristics:	Polyclonal Antibodies

## Target Details

---

Target:	PAP Associated Domain Containing 7 (PAPD7)
Alternative Name:	PAPD7 ( <a href="#">PAPD7 Products</a> )
Target Type:	Viral Protein
Background:	The protein encoded by this gene is a DNA polymerase that is likely involved in DNA repair. In addition, the encoded protein may be required for sister chromatid adhesion. Alternatively spliced transcript variants that encode different isoforms have been described.,PAPD7,LAK-1,LAK1,POLK,POLS,TRF4,TRF4-1,TRF41,TUTASE5,Epigenetics & Nuclear Signaling,PAPD7
Molecular Weight:	59 kDa/82 kDa
Gene ID:	11044
UniProt:	<a href="#">Q5XG87</a>

## Application Details

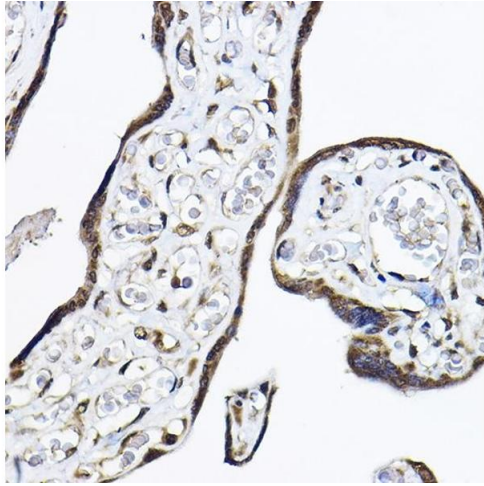
---

Application Notes:	WB,1:500 - 1:1000,IHC,1:50 - 1:100
Comment:	HIGH QUALITY
Restrictions:	For Research Use only

## Handling

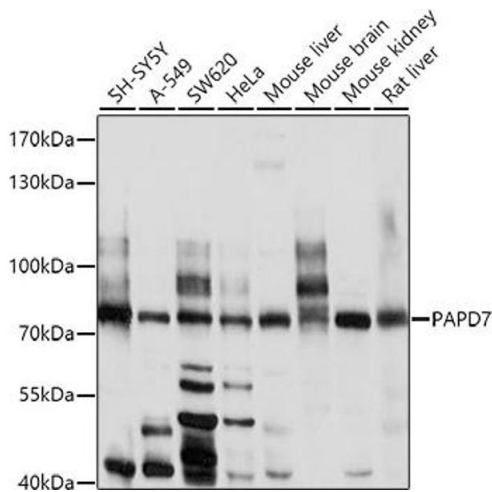
---

Format:	Liquid
Buffer:	PBS with 0.02 % sodium azide,50 % glycerol, pH 7.3.
Preservative:	Sodium azide
Precaution of Use:	This product contains Sodium azide: a POISONOUS AND HAZARDOUS SUBSTANCE which should be handled by trained staff only.
Storage:	-20 °C
Storage Comment:	Store at -20°C. Avoid freeze / thaw cycles.



### Immunohistochemistry

**Image 1.** Immunohistochemistry of paraffin-embedded human placenta using P Rabbit pAb (ABIN6130631, ABIN6145213, ABIN6145214 and ABIN6214119) at dilution of 1:50 (40x lens). Perform high pressure antigen retrieval with 10 mM citrate buffer pH 6.0 before commencing with IHC staining protocol.



### Western Blotting

**Image 2.** Western blot analysis of extracts of various cell lines, using P antibody (ABIN6130631, ABIN6145213, ABIN6145214 and ABIN6214119) at 1:1000 dilution. Secondary antibody: HRP Goat Anti-Rabbit IgG (H+L) (ABIN1684268 and ABIN3020597) at 1:10000 dilution. Lysates/proteins: 25 µg per lane. Blocking buffer: 3 % nonfat dry milk in TBST. Detection: ECL Enhanced Kit (RM00021). Exposure time: 90s.