

Datasheet for ABIN6145269
anti-PBX1 antibody (AA 311-430)[Go to Product page](#)

1 Image

Overview

Quantity:	100 µL
Target:	PBX1
Binding Specificity:	AA 311-430
Reactivity:	Human
Host:	Rabbit
Clonality:	Polyclonal
Conjugate:	This PBX1 antibody is un-conjugated
Application:	Western Blotting (WB)

Product Details

Immunogen:	Recombinant fusion protein containing a sequence corresponding to amino acids 311-430 of human PBX1 (NP_002576.1).
Sequence:	VTATNVSAHG SQANSPSTPN SAGSSSSFNM SNSGDLFMSV QSLNGDSYQG AQVGANVQSQ VDTLRHVISQ TGGYSDGLAA SQMYSPQGIS ANGGWQDATT PSSVTSPTEG PGSVHSDTSN
Isotype:	IgG
Cross-Reactivity:	Human, Mouse
Characteristics:	Polyclonal Antibodies

Target Details

Target:	PBX1
---------	------

Target Details

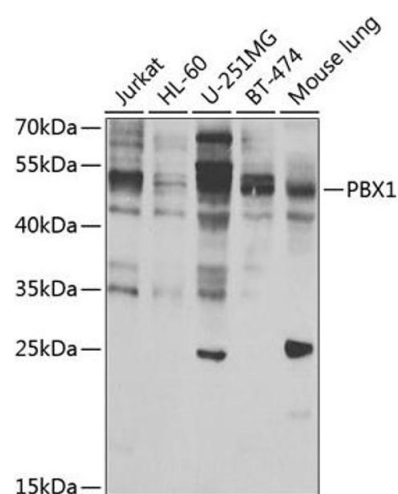
Alternative Name:	PBX1 (PBX1 Products)
Background:	This gene encodes a nuclear protein that belongs to the PBX homeobox family of transcriptional factors. Studies in mice suggest that this gene may be involved in the regulation of osteogenesis and required for skeletal patterning and programming. A chromosomal translocation, t(1,19) involving this gene and TCF3/E2A gene, is associated with pre-B-cell acute lymphoblastic leukemia. The resulting fusion protein, in which the DNA binding domain of E2A is replaced by the DNA binding domain of this protein, transforms cells by constitutively activating transcription of genes regulated by the PBX protein family. Alternatively spliced transcript variants encoding different isoforms have been found for this gene.,PBX1,Epigenetics & Nuclear Signaling,Transcription Factors,Stem Cells,Hematopoietic Progenitors,PBX1
Molecular Weight:	38 kDa/46 kDa
Gene ID:	5087
UniProt:	P40424

Application Details

Application Notes:	WB,1:500 - 1:2000
Restrictions:	For Research Use only

Handling

Format:	Liquid
Buffer:	PBS with 0.02 % sodium azide,50 % glycerol, pH 7.3.
Preservative:	Sodium azide
Precaution of Use:	This product contains Sodium azide: a POISONOUS AND HAZARDOUS SUBSTANCE which should be handled by trained staff only.
Storage:	-20 °C
Storage Comment:	Store at -20°C. Avoid freeze / thaw cycles.



Western Blotting

Image 1. Western blot analysis of extracts of various cell lines, using PBX1 antibody (ABIN6129765, ABIN6145269, ABIN6145270 and ABIN6223473) at 1:1000 dilution. Secondary antibody: HRP Goat Anti-Rabbit IgG (H+L) (ABIN1684268 and ABIN3020597) at 1:10000 dilution. Lysates/proteins: 25 µg per lane. Blocking buffer: 3 % nonfat dry milk in TBST. Detection: ECL Basic Kit (RM00020). Exposure time: 30s.